

INSTRUMENT
APPROACH
CHART

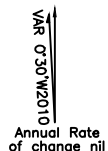
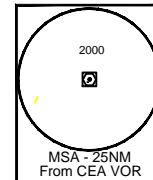
AERODROME ELEV. 23ft.
HEIGHTS RELATED TO
THR RWY 19R—ELEV.19ft

APP. 119.3/127.9
TWR.118.1

KOLKATA
INDIA
VOR RWY19R

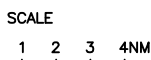
COORDS OF RADIO NAV AID WGS-84
BEARING ARE MAGNETIC
ALTITUDE, ELEVATIONS
AND HEIGHTS IN FEET.
All distances & radials are from
(112.5 CEA) VOR.

Speed restricted to 180kts



NOTE: ATC may clear within aerodrome control zone an aircraft established on any radial other than the promulgated radial to join 12D/13D ARC Procedure at or above 2000ft. clear of BARRACKPORE airspace.

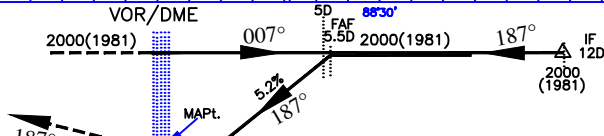
CAUTION:-
1. Identify Runway 19R before landing.
2. Do not mistake BARRACKPORE Airfield for Kolkata airfield, BARRACKPORE Airfield (Rwy orientation 02/20) located 330°/9.1NM from Kolkata airfield.



BEHALA
AERODROME

Transition Altitude 4000

MISSED APPROACH
Climb straight ahead to 2000ft.
then turn LEFT to join VOR
(112.5CEA) holding or as
instructed by ATC.



ELEV. 19

NAUTICAL MILES FROM THR RWY 19R

| O. C. A. (H) | | | Distance (VORDME) /Altitude information | | | | | | |
|----------------------|----------|----------|--|------|------|------|------|-----|-----|
| CATEGORY OF AIRCRAFT | A/B | C/D | Distance(NM) | 5.5D | 5D | 4D | 3D | 2D | 1D |
| STRAIGHT-IN | 440(417) | 440(417) | Distance(NM) | 5.5D | 5D | 4D | 3D | 2D | 1D |
| VISUAL CIRCLING | 720(697) | 820(797) | Altitude (ft.) | 2000 | 1840 | 1530 | 1210 | 900 | 580 |
| | | | GROUND SPEED / RATE OF DESCENT INFORMATION | | | | | | |
| | | | Ground speed (kt.) | 80 | 100 | 120 | 140 | 160 | 180 |
| | | | Rate of descent (ft/min) | 420 | 525 | 630 | 735 | 845 | 950 |

DRG. NO. AAI/9-IALC/2002/11.10.2018