

**INSTRUMENT
APPROACH
CHART**

Aerodrome Elev 350ft
Height related to:
THR RWY 26-Elev 332ft

TWR.119.0

**TIRUPATI
INDIA
ILS RWY 26**

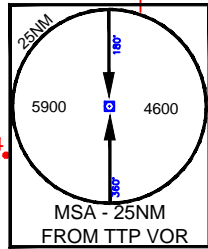
AIP INDIA

79°30'E

79°40'

79°50' (Cat A/B/C)

VAR 2°00'W 1995
Annual Rate of change 2'E



Coordinates of Radio-Navigation Aid in WGS-84.
Bearing are degrees magnetic.
Altitudes, elevations and heights in Feet.
All radials and distances are from VOR (115.7 TTP) unless otherwise specified.

Caution for hills south of FAT
1.Kandadu Hill T.E.2759 ft R-099/5.2 nm
2.Batanaya Hill T.E.2913 ft R-101/7.2 nm

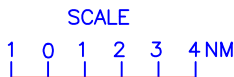
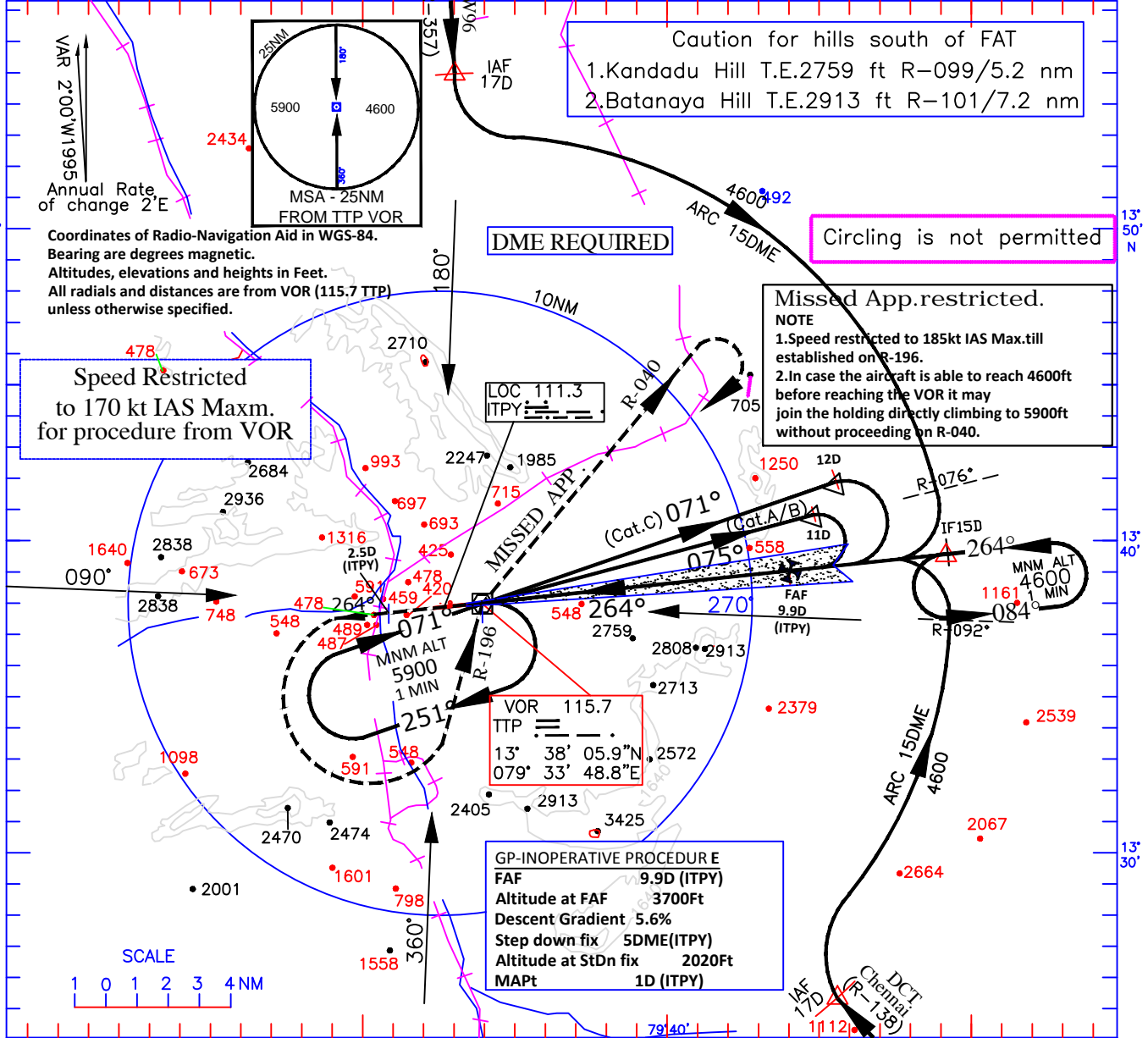
DME REQUIRED

Circling is not permitted

Speed Restricted to 170 kt IAS Maxm. for procedure from VOR

Missed App.restricted.

NOTE
1.Speed restricted to 185kt IAS Max.till established on R-196.
2.In case the aircraft is able to reach 4600ft before reaching the VOR it may join the holding directly climbing to 5900ft without proceeding on R-040.



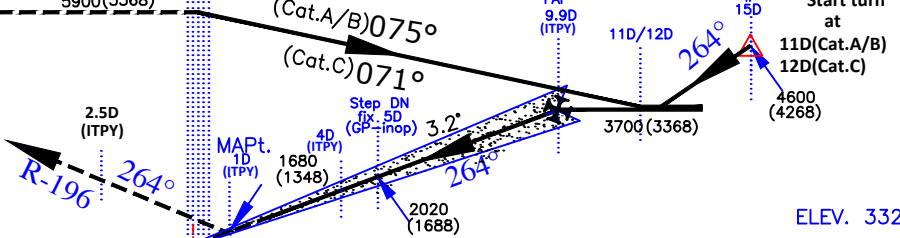
Transition Altitude 8000

VOR/DME

MISSED APPROACH

Climb straight ahead, at 2.5D (ITPY) after crossing THR turn left to establish R-196 to VOR climbing to 5900ft, then climb via radial 040, passing 4600ft turn right to join VOR holding at 5900 ft or as instructed by ATC.

ILS RDH-57 ft



ELEV. 332

NAUTICAL MILES FROM THR RWY 0 1 2 3 4 5 6 7 8 9 10 11 12 13 14 15

O. C. A. (H)		Distance (ITPY) /Altitude information (G.P.in operative)									
CATEGORY OF AIRCRAFT	A/B/C	Distance(NM)	9.9D	9D	8D	7D	6D	5D	4D	3D	2D
STRAIGHT-IN	540(208)	Altitude (ft.)	3700	3380	3040	2700	2360	2020	1680	1340	1000
G.P.In-operative procedure		Ground speed/Rate of descent information (G.P.In-operative)									
STRAIGHT-IN	740(408)	Ground speed (kt.)	160			140	120	100	80		
DRG. NO. AAI/11-IALC/2010/01.05.16		Rate of descent (ft/min)	905			790	680	570	450		