

**AERODROME CHART**

ARP: 19° 05' 29.6" N  
072° 51' 57.5" E

TWR 118.1  
GND 121.9

**MUMBAI, INDIA**

AD ELEV. 40

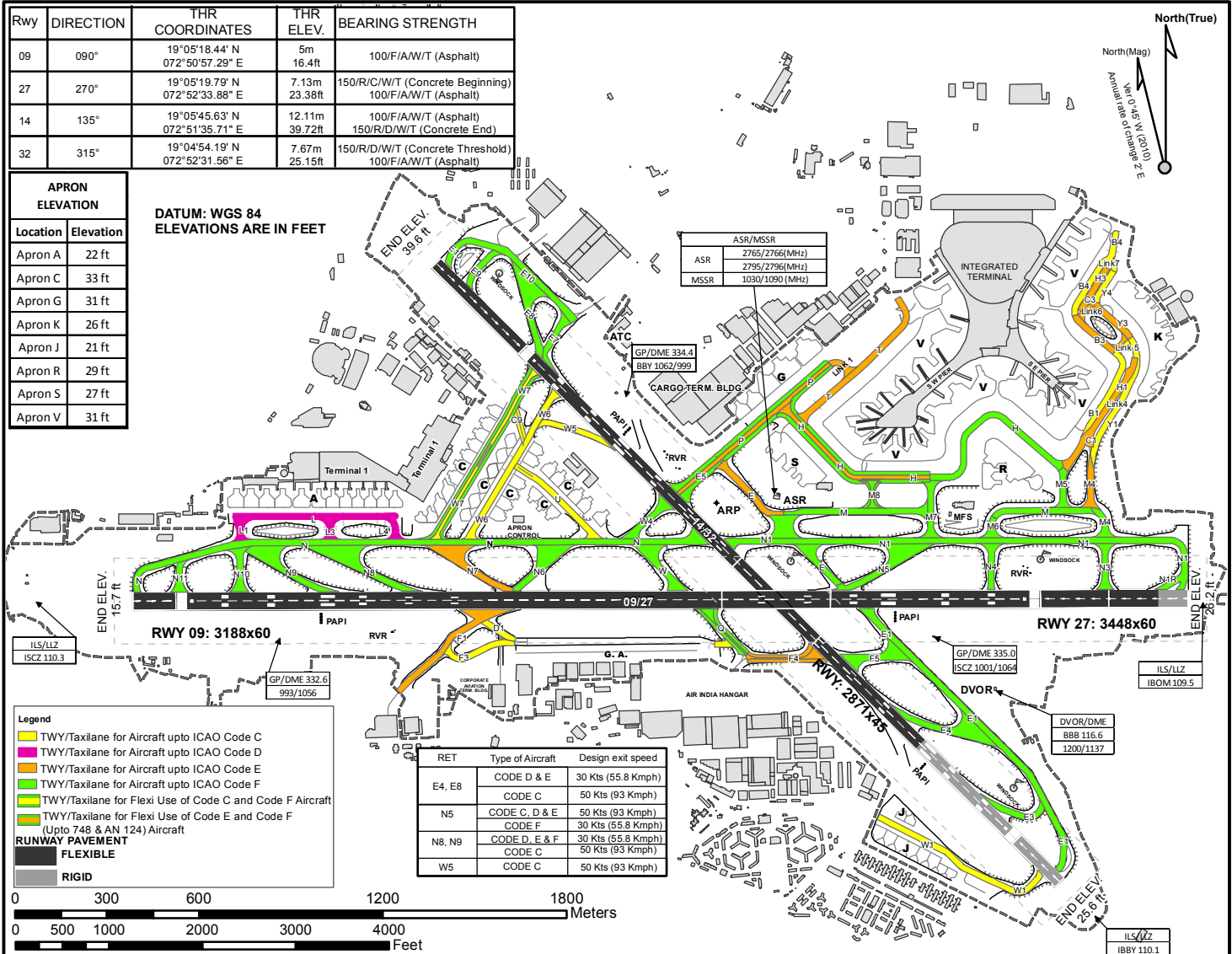
**COLOUR CODED AERODROME CHART FOR CONFIGURATION OF TWY/TAXILANE**

**CHHATRAPATI SHIVAJI MAHARAJ INTL AIRPORT**

Rwy	DIRECTION	THR COORDINATES	THR ELEV.	BEARING STRENGTH
09	090°	19°05'18.44" N 072°50'57.29" E	5m 16.4ft	100/F/A/W/T (Asphalt)
27	270°	19°05'19.79" N 072°52'33.88" E	7.13m 23.38ft	150/R/C/W/T (Concrete Beginning) 100/F/A/W/T (Asphalt)
14	135°	19°05'45.63" N 072°51'35.71" E	12.11m 39.72ft	100/F/A/W/T (Asphalt) 150/R/D/W/T (Concrete End)
32	315°	19°04'54.19" N 072°52'31.56" E	7.67m 25.15ft	150/R/D/W/T (Concrete Threshold) 100/F/A/W/T (Asphalt)

APRON ELEVATION	
Location	Elevation
Apron A	22 ft
Apron C	33 ft
Apron G	31 ft
Apron K	26 ft
Apron J	21 ft
Apron R	29 ft
Apron S	27 ft
Apron V	31 ft

DATUM: WGS 84  
ELEVATIONS ARE IN FEET



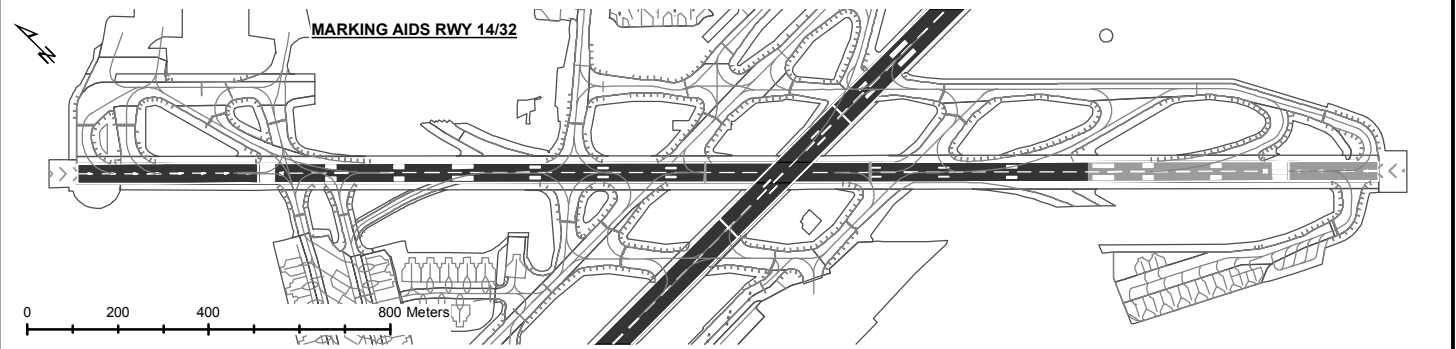
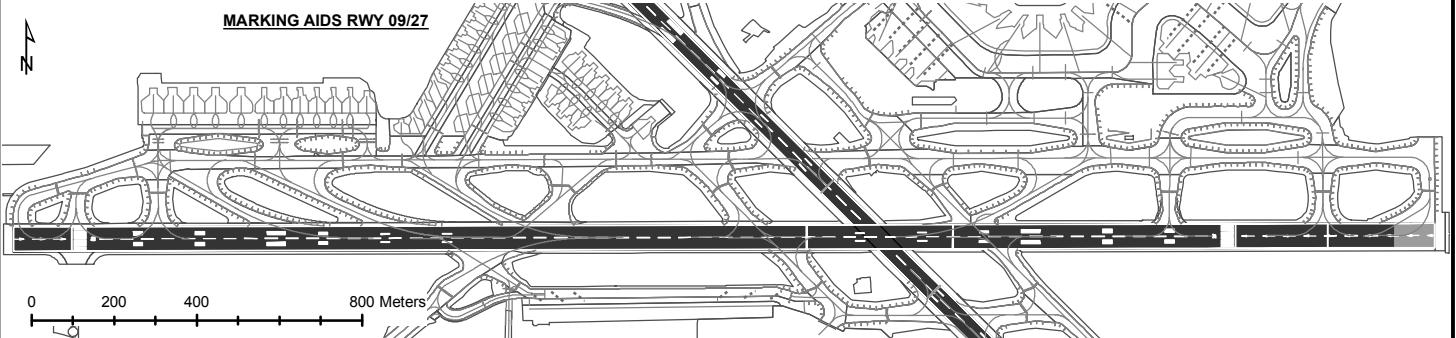
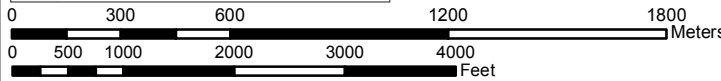
**Legend**

- Yellow: TWY/Taxilane for Aircraft upto ICAO Code C
- Pink: TWY/Taxilane for Aircraft upto ICAO Code D
- Orange: TWY/Taxilane for Aircraft upto ICAO Code E
- Light Green: TWY/Taxilane for Aircraft upto ICAO Code F
- Dark Green: TWY/Taxilane for Flexi Use of Code C and Code F Aircraft
- Light Blue: TWY/Taxilane for Flexi Use of Code E and Code F (Upto 743 & AN 124) Aircraft

**RUNWAY PAVEMENT**

- Grey: FLEXIBLE
- Black: RIGID

RET	Type of Aircraft	Design exit speed
E4, E8	CODE D & E	30 Kts (55.8 Kmph)
	CODE C	50 Kts (93 Kmph)
N5	CODE C, D & E	50 Kts (93 Kmph)
	CODE F	30 Kts (55.8 Kmph)
N8, N9	CODE D, E & F	30 Kts (55.8 Kmph)
	CODE C	50 Kts (93 Kmph)
W5	CODE C	50 Kts (93 Kmph)



NOTE: AERONAUTICAL GROUND LIGHTS ARE NOT SHOWN ON THIS CHART

Coordinate System : WGS 1984 UTM Zone 43 N