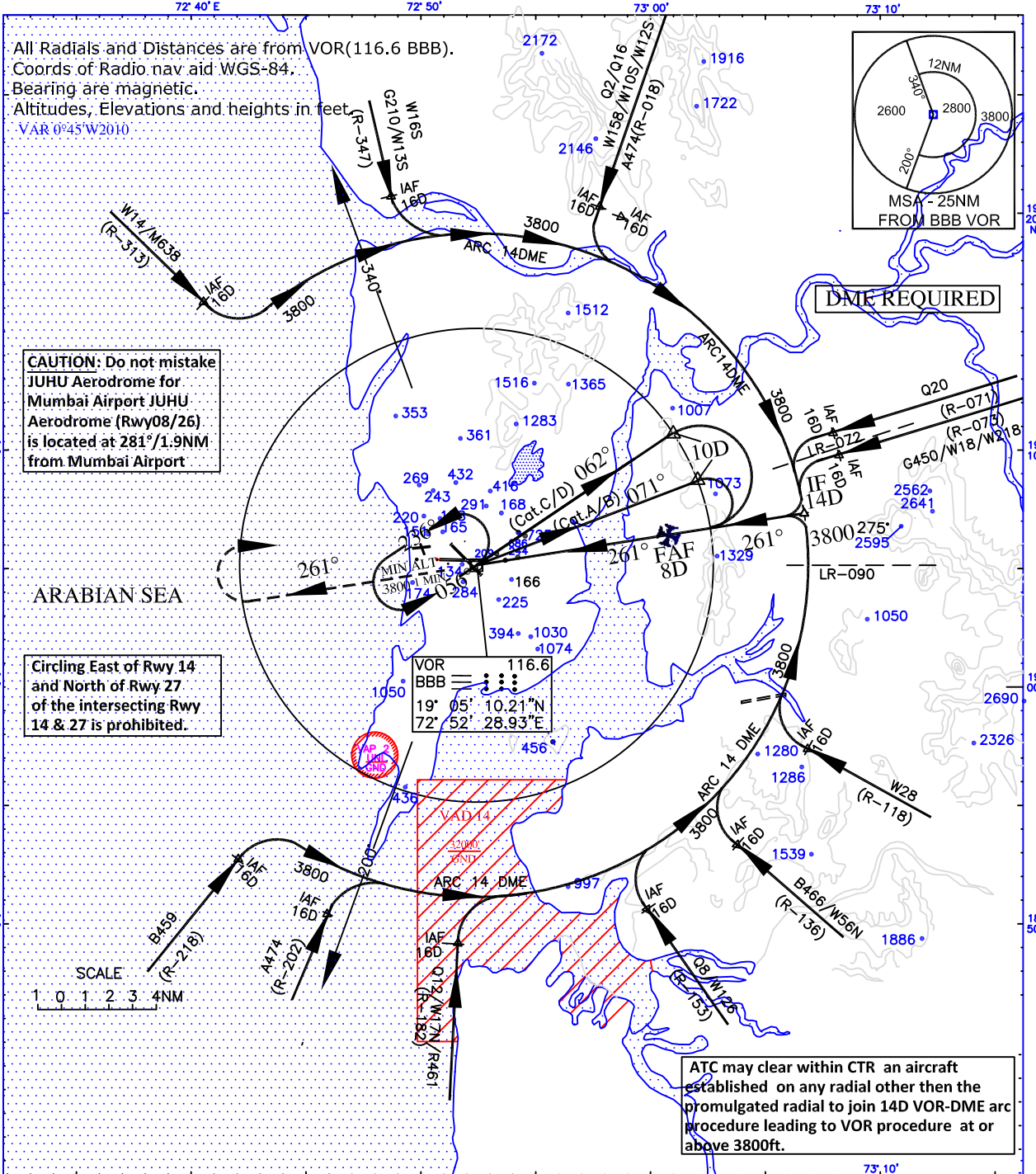


INSTRUMENT APPROACH CHART

AERODROME ELEV. 40ft
HEIGHT RELATED TO
THR RWY 27 - ELEV. 23ft

APP 127.9
TWR 118.1

MUMBAI(VABB)
INDIA
VOR RWY 27



CAUTION: Do not mistake JUHU Aerodrome for Mumbai Airport JUHU Aerodrome (Rwy08/26) is located at 281°/1.9NM from Mumbai Airport

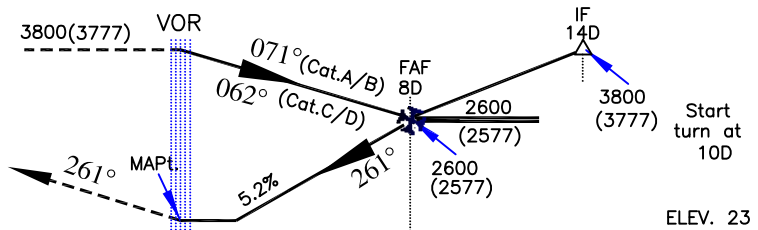
Circling East of Rwy 14 and North of Rwy 27 of the intersecting Rwy 14 & 27 is prohibited.

ATC may clear within CTR an aircraft established on any radial other than the promulgated radial to join 14D VOR-DME arc procedure leading to VOR procedure at or above 3800ft.

Transition Altitude 4000

MISSED APPROACH

Climb straight ahead to 2000 ft., Then climbing turn RIGHT to join VOR holding at 3800ft. or as instructed by ATC.



NAUTICAL MILES FROM THR RWY 27

CATEGORY OF AIRCRAFT	OCA(H)			Distance /Altitude information						
	A/B	C	D	Distance(NM)	8D	7D	6D	5D	4D	3D
STRAIGHT-IN	1020(997)	1020(997)	1020(997)	Altitude (ft.)	2600	2280	1960	1640	1320	1000
VISUAL CIRCLING	1380(1340)	1480(1440)	1700(1660)	Rate of Descent /Ground speed information						
	Ground speed (kt.)				80	100	120	140	160	180
	Rate of descent (ft/min)				420	525	630	735	845	950

DRG. NO. AAI/14-IALC/04/24-07-2018