

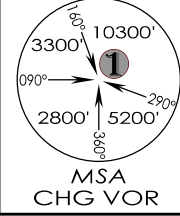
1-4

VICG
CHANDIGARH

IAF
Eff 16 SEP 22

CHANDIGARH, INDIA
CAT I ILS RWY 11

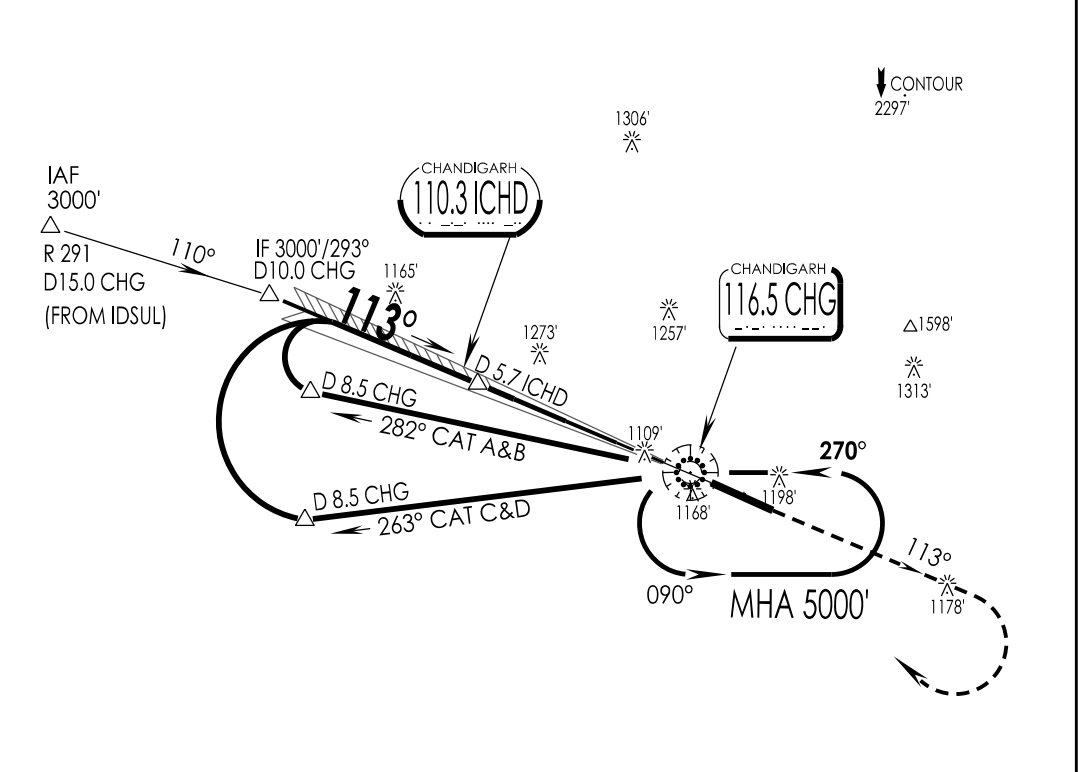
CHANDIGARH Approach 122.65, UC		CHANDIGARH Tower 118.3/126.6, VC		ATIS 116.5	
VOR CHG 116.5	LOC ICHD 110.3	FINAL Apch Crs 113°	GS D 4.0 ICHD 2420'	DA(H)/MDA(H) As per table	Apt Elev 1032' RWY 1029'
MISSED APCH : Climb STRAIGHT AHEAD to 3500', then climbing turn RIGHT to join VOR hold at 5000' or as directed by ATC.					
Alt Set: hPa		Rwy Elev: 37 hPa	Trans level: By ATC		Trans alt: 12000'



1 MIN = 1 NM
NM 5
0
NM 5

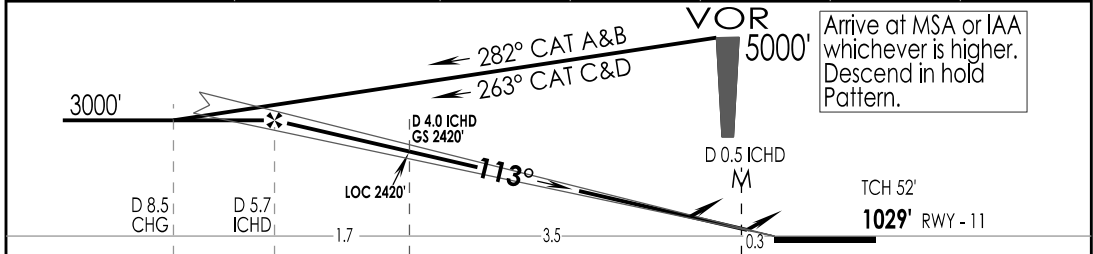
SURVEY PERIOD : 2015-16

DME Required ① : MSA within 10Nm from R-340 to R-110 is 8000'.



CAUTION
- Do not cross beyond D13.5 CHG during Hold to avoid entering VID-122, when active.

LOC(GS OUT)	ICHD DME	5.7	5.0	4.0	3.0	2.0
	ALTITUDE (ft)	3000	2770	2420	2070	1720



GND SPEED KTS	80	100	120	140	160	180	CAT I PAPI-L	↑ 3500'	↗ 5000'
GRADIENT 5.77 %	467	584	701	817	934	1051			

STRAIGHT-IN LANDING RWY 11				CIRCLE - TO - LAND AVOID VISUAL CIRCLING OVER CHANDIGARH CITY			
ILS		LOC (GS OUT) CDFA		Max Kts	MDA (H)	VIS	
DA(H) 1240' (211')		MDA(H) 1420' (388')					
A	FULL	ALS OUT	FULL	ALS OUT	100	1600' (568')	2800m
					135		
B	RVR 550m	RVR 1200m	RVR 1100m	RVR 1500m	180	1660' (628')	3200m
C					205		
D				RVR 1800m	205	2000' (968')	4500m

CHANGES : VID-131 withdrawn. IPDC, DTE OF OPS (T & H)