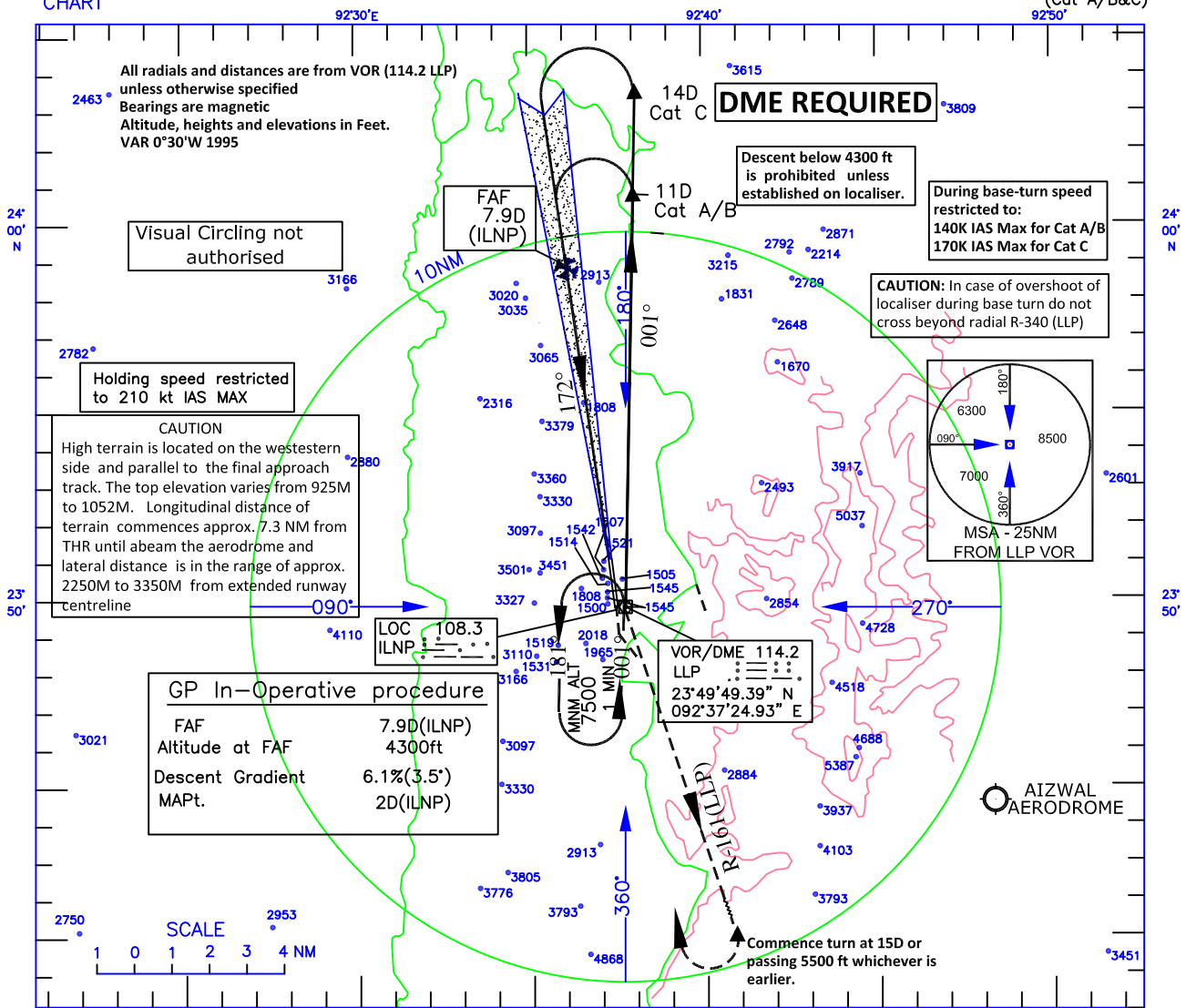


INSTRUMENT
APPROACH
CHART

AERODROME ELEV 1398ft.
HEIGHTS RELATED TO
THR RWY 17-ELEV 1374ft

TWR 122.25
APP 122.25

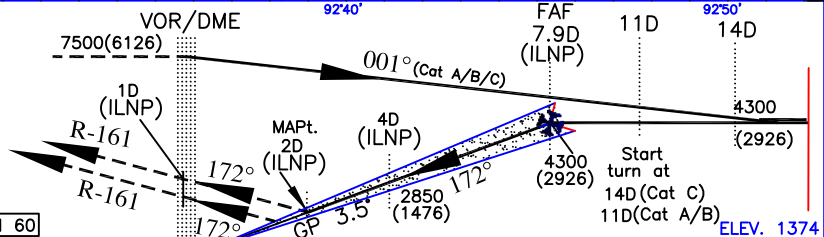
LENGPUI (VELP)
INDIA
ILS RWY 17
(Cat A/B&C)



Transition Altitude 8500

Missed Approach
(Missed Approach Speed restricted to 160K IAS Max until completion of turn)
Climb straight ahead, at 1D (ILS-DME) after THR, establish radia R-161 (LLP) climbing to 7500ft. Crossing 15D or passing 5500ft, whichever is earlier, turn right to join VOR holding or as advised by ATC.

ILS RDH 60



NAUTICAL MILES FROM THR RWY 17			Distance (ILNP)/Altitude information (GP-INOP)							
Category of Acft	OCA (H)		Distance (NM)	Distance (ILNP)					2D	
	A/B	C		7.9D	7D	6D	5D	4D		
Straight-in	1660(286)	1670(296)	Altitude	4300	3960	3590	3220	2850	2480	2110
GP In-Operative			Ground Speed/Rate of Descent Information							
Straight-in	2220(822)	2220(822)	Ground Speed (Kt)	80	100	120	140	160		
			ROD (Ft/NM)	495	620	740	865	990		

- These procedures require a missed approach climb gradient of 4.0% (243 Ft/NM) until passing 5500ft.
- For aircraft which can achieve only 2.5% (152Ft/NM) missed approach climb gradient, OCA is 2100ft and 2110 ft for Cat A/B & Cat C respectively
- Localiser coverage restricted as:
Western side: 23° upto 10NM & 9.2° upto 18NM
Eastern side: No restriction.
- In case of failure of VOR/DME(LLP) during initial/missed approach commence turns w.r.t. ILS/DME (ILNP):
Base turn ---- 9.8D & 12.8 D for Cat A/B & Cat C respectively.
Missed Approach -- 16 D.

DRG. NO. AAI/03-IALC/11/19-07-2018