

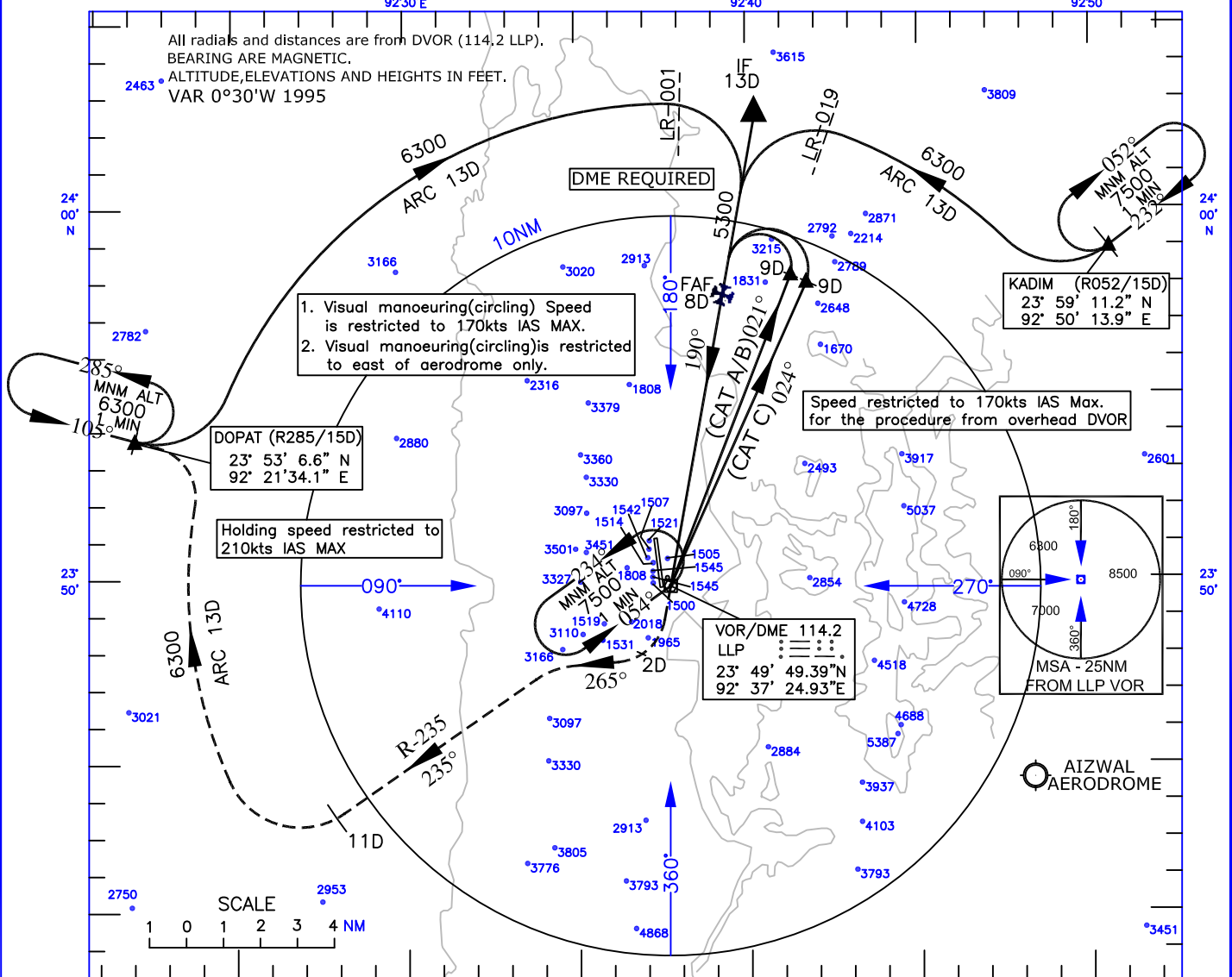
INSTRUMENT APPROACH CHART

AERODROME ELEV. 1398ft.
HEIGHTS RELATED TO
THR RWY 17-ELEV.1374ft
THR RWY 35-ELEV.1395ft

TWR.122.25

LENGPUI (VELP) INDIA
VOR CIRCLING (Cat.A/B&C)

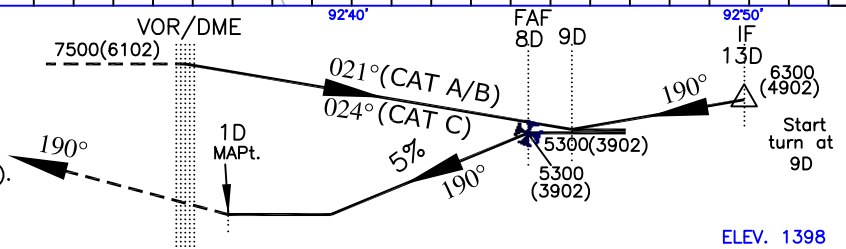
All radials and distances are from DVOR (114.2 LLP). BEARING ARE MAGNETIC.
ALTITUDE, ELEVATIONS AND HEIGHTS IN FEET. VAR 0°30'W 1995



Transition Altitude 8500

MISSED APPROACH

Speed restricted to 160kts IAS Max. until established on track 235°M(R-235)
Climb straight ahead until 2D
Then climbing turn RIGHT on heading 265°M to establish on track 235°M(R-235).
Continue climbing to 6300ft. and at 11D turn RIGHT to fly DME arc at 13D to join holding at DOPAT



NAUTICAL MILES FROM THR RWY 17

CATEGORY OF AIRCRAFT	O. C. A. (H)			Distance(VORDME)/ Altitude information							
	A/B	C		Distance(NM)	8D	7D	6D	5D	4D	3D	2D
STRAIGHT-IN	-	-		Altitude (ft.)	5300	4980	4670	4370	4070	3760	3460
VISUAL CIRCLING	3240(1842)	3240(1842)		Rate of Descent / Ground speed Information							
				Ground speed (kt.)	90	110	130	150	170		
				Rate of descent (ft/min)	455	555	660	760	860		

DRG. NO. AAI/IALC/01/19-07-2018

AIRPORTS AUTHORITY OF INDIA