

INSTRUMENT
APPROACH
CHART

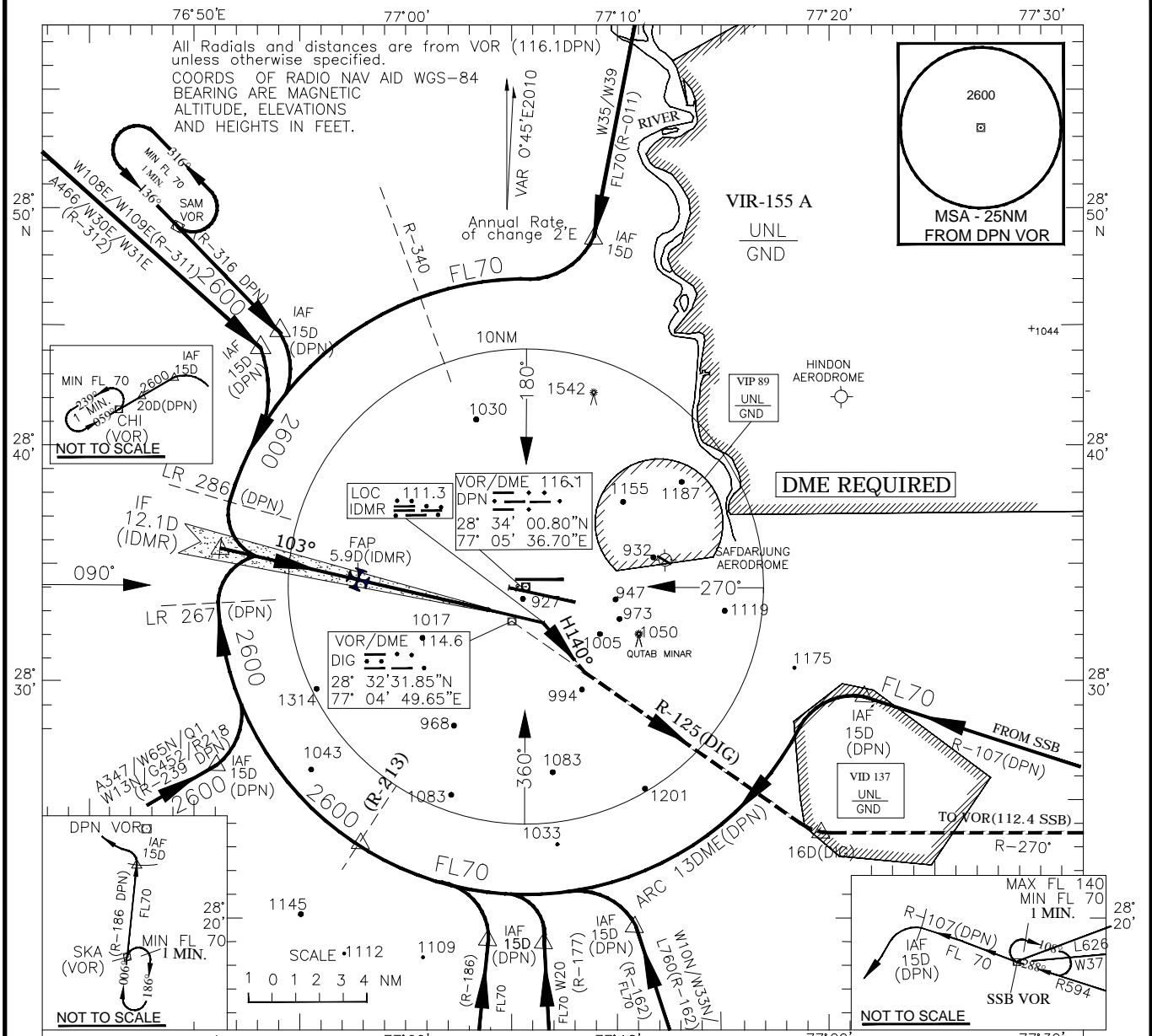
AERODROME ELEV 777ft.

DELHI
INDIA

HEIGHTS RELATED TO
THR RWY 11 ELEV 723ft

ILS (CAT-II/IIIA/IIIB) RWY 11

TWR	APP
125.85, 118.1, 118.75, 118.25	124.2, 126.35



Transition Alt. 4000

ELEV. 723

NAUTICAL MILES FROM THR RWY 11

Missed Approach
Climb straight ahead, at 1.5D(IDMR) after the THR Turn RIGHT on heading 140 to establish R-125(114.6DIG) climbing to 2600ft. crossing 16D (DIG) Turn left to proceed to VOR(112.4 SSB) VIA R-270(SSB), crossing 16D(SSB) climb to FL70 to join holding procedure or as instructed by ATC.

ILS RDH 50

STRAIGHT-IN	Cat II	OCA (ft)	DH(ft)	RVR(m)
	Cat IIIA	824	100	300
	Cat IIIB	NA	50	175
		NA	NA	50

DRG. NO. AAI/18-IALC/09/01.05.2016