

AIRCRAFT PARKING /  
DOCKING CHART

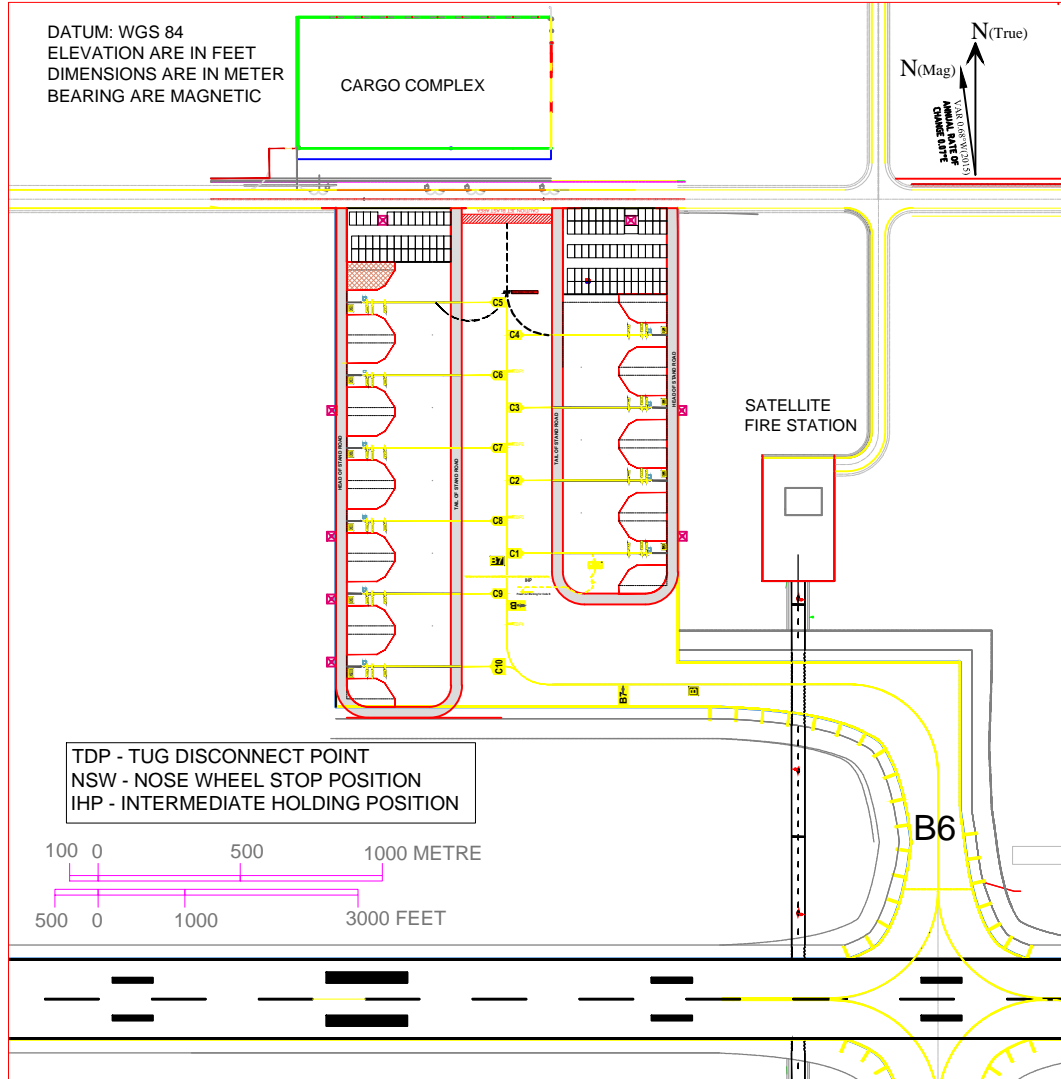
APRON ELEVATION  
1971.5 FT

TWR : 118.450 MHz  
GND : 121.850 MHz

INDIA / SHAMSHABAD  
(HYDERABAD)

CARGO APRON

RAJIV GANDHI INTL. AIRPORT



AIRCRAFT STAND	WGS 84 COORDINATES DD MM SS.SS	TYPE OF AIRCRAFT	PCN	REMARKS	CONTACT/ REMOTE
C 1	17°13'58.74" N 078°25'14.84" E	CODE C AND Q 400	77/F/B/W/T	POWER IN - PUSH BACK	REMOTE
C 2	17°14'00.08" N 078°25'14.82" E	CODE C AND Q 400	77/F/B/W/T	POWER IN - PUSH BACK	REMOTE
C 3	17°14'01.38" N 078°25'14.80" E	CODE C AND Q 400	114/R/B/W/T	POWER IN - PUSH BACK	REMOTE
C 4	17°14'02.71" N 078°25'14.78" E	CODE C AND Q 400	114/R/B/W/T	POWER IN - PUSH BACK	REMOTE
C 5	17°14'03.23" N 078°25'09.70" E	CODE C AND Q 400	114/R/B/W/T	POWER IN - PUSH BACK	REMOTE
C 6	17°14'01.90" N 078°25'09.72" E	CODE C AND Q 400	114/R/B/W/T	POWER IN - PUSH BACK	REMOTE
C 7	17°14'00.60" N 078°25'09.74" E	CODE C AND Q 400	77/F/B/W/T	POWER IN - PUSH BACK	REMOTE
C 8	17°13'59.26" N 078°25'09.76" E	CODE C AND Q 400	77/F/B/W/T	POWER IN - PUSH BACK	REMOTE
C 9	17°13'57.96" N 078°25'09.78" E	CODE C AND Q 400	77/F/B/W/T	POWER IN - PUSH BACK	REMOTE
C 10	17°13'56.63" N 078°25'09.79" E	CODE C AND Q 400	77/F/B/W/T	POWER IN - PUSH BACK	REMOTE

TAXIWAY / TAXILANE DETAILS			
TAXIWAY / TAXILANE	WIDTH	PCN	CO-ORDINATES
TAXIWAY B	25.0 M	77/F/B/W/T	17°13'56.25" N 078°25'14.97" E
TAXIWAY B6	25.0 M	77/F/B/W/T	17°13'53.49"N 078°25'20.41" E
TAXILANE B7	18.6 M	77/F/B/W/T (146.5M) 114/R/B/W/T (118.5M)	17°13'59.39" N 078°25'12.29" E

NOTE: AERONAUTICAL GROUND LIGHTS ARE NOT SHOWN ON THIS CHART