

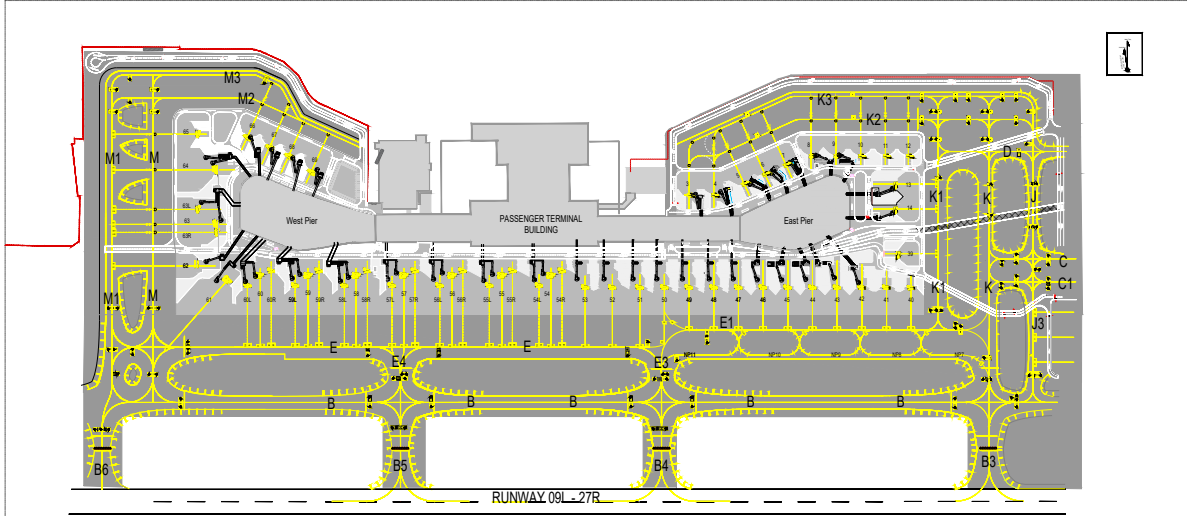
AIRCRAFT PARKING /
DOCKING CHART

APRON ELEVATION
1991.4 FT

TWR : 118.450 MHz
GND : 121.850 MHz

INDIA / SHAMSHABAD
(HYDERABAD)
RAJIV GANDHI INTL. AIRPORT

APRON PASSENGER TERMINAL



DATUM: WGS 84
ELEVATION ARE IN FEET
DIMENSIONS ARE IN METER
BEARING ARE MAGNETIC

AIRCRAFT STAND	WGS 84 COORDINATES DD MM.SS.SS		TYPE OF AIRCRAFT
3	17° 14' 08.82" N	078° 25' 55.24" E	CODE C
4	17° 14' 08.94" N	078° 25' 56.71" E	CODE C
5	17° 14' 09.42" N	078° 25' 58.48" E	CODE C
6	17° 14' 09.96" N	078° 25' 59.72" E	CODE C
7	17° 14' 10.54" N	078° 26' 00.96" E	CODE C
8	17° 14' 11.13" N	078° 26' 02.48" E	CODE C
9	17° 14' 11.15" N	078° 26' 03.96" E	CODE C
10	17° 14' 11.11" N	078° 26' 05.43" E	CODE C
11	17° 14' 11.13" N	078° 26' 06.91" E	CODE C
12	17° 14' 11.15" N	078° 26' 08.28" E	CODE C
13	17° 14' 09.63" N	078° 26' 07.47" E	CODE C
14	17° 14' 08.21" N	078° 26' 07.50" E	CODE C
39	17° 14' 05.65" N	078° 26' 07.69" E	CODE C
40	17° 14' 03.77" N	078° 26' 08.63" E	CODE C
41	17° 14' 03.75" N	078° 26' 07.16" E	CODE C
42	17° 14' 03.73" N	078° 26' 05.68" E	CODE C
43	17° 14' 03.71" N	078° 26' 04.21" E	CODE C
44	17° 14' 03.69" N	078° 26' 02.74" E	CODE C
45	17° 14' 03.67" N	078° 26' 01.27" E	CODE C
46	17° 14' 03.65" N	078° 25' 59.80" E	CODE C
47	17° 14' 03.68" N	078° 25' 58.32" E	CODE C
48	17° 14' 03.61" N	078° 25' 56.85" E	CODE C
49	17° 14' 03.58" N	078° 25' 55.38" E	CODE C
50	17° 14' 03.55" N	078° 25' 53.92" E	CODE C
51	17° 14' 03.53" N	078° 25' 52.45" E	CODE C
52	17° 14' 03.96" N	078° 25' 50.80" E	CODE C
53	17° 14' 03.34" N	078° 25' 49.19" E	CODE C
54L	17° 14' 03.29" N	078° 25' 46.43" E	CODE C
54	17° 14' 04.05" N	078° 25' 46.91" E	CODE E
54R	17° 14' 04.24" N	078° 25' 47.79" E	CODE C
55L	17° 14' 03.24" N	078° 25' 43.47" E	CODE C
55	17° 14' 04.01" N	078° 25' 44.20" E	CODE F
55R	17° 14' 04.37" N	078° 25' 44.82" E	CODE C
56L	17° 14' 03.19" N	078° 25' 40.49" E	CODE C
56	17° 14' 03.95" N	078° 25' 41.23" E	CODE F
56R	17° 14' 04.33" N	078° 25' 41.86" E	CODE C
57L	17° 14' 03.15" N	078° 25' 37.64" E	CODE C
57	17° 14' 03.91" N	078° 25' 38.34" E	CODE E
57R	17° 14' 04.13" N	078° 25' 39.00" E	CODE C
58L	17° 14' 03.11" N	078° 25' 34.79" E	CODE C
58	17° 14' 03.87" N	078° 25' 35.49" E	CODE E
58R	17° 14' 03.14" N	078° 25' 36.15" E	CODE C
59L	17° 14' 03.20" N	078° 25' 31.87" E	CODE C
59	17° 14' 03.89" N	078° 25' 32.62" E	CODE E
59R	17° 14' 03.26" N	078° 25' 33.28" E	CODE C
60L	17° 14' 03.16" N	078° 25' 29.03" E	CODE C
60	17° 14' 03.85" N	078° 25' 29.78" E	CODE E
60R	17° 14' 03.18" N	078° 25' 30.44" E	CODE C
61	17° 14' 03.65" N	078° 25' 27.87" E	CODE E

AIRCRAFT STAND	WGS 84 COORDINATES DD MM.SS.SS		TYPE OF AIRCRAFT
62	17° 14' 04.36" N	078° 25' 26.27" E	CODE C
63R	17° 14' 06.29" N	078° 25' 26.17" E	CODE C
63	17° 14' 06.76" N	078° 25' 27.23" E	CODE E
63L	17° 14' 07.60" N	078° 25' 26.19" E	CODE C
64	17° 14' 09.89" N	078° 25' 27.13" E	CODE E
65	17° 14' 11.90" N	078° 25' 26.09" E	CODE C
66	17° 14' 11.60" N	078° 25' 28.96" E	CODE C
67	17° 14' 11.08" N	078° 25' 30.22" E	CODE C
68	17° 14' 10.55" N	078° 25' 31.48" E	CODE C
69	17° 14' 09.65" N	078° 25' 32.82" E	CODE C

TAXIWAY / TAXILANE DETAILS		
TAXIWAY	WIDTH	PCN
B3	25.0 M	77/F/B/W/T
B4	25.0 M	77/F/B/W/T
B5	25.0 M	77/F/B/W/T
E	25.0 M	77/F/B/W/T
E1	18.6 M	77/F/B/W/T
E3	25.0 M	77/F/B/W/T
E4	25.0 M	77/F/B/W/T
K*	25.0 M	77/F/B/W/T
K1	18.6 M	73/F/B/W/T
K2	15.0 M	68/F/B/W/T
K3	15.0 M	68/F/B/W/T
J	15.0 M	68/F/B/W/T
M	23.0 M	73/F/B/W/T
M1	23.0 M	73/F/B/W/T
M2	15.0 M	68/F/B/W/T
M3	15.0 M	68/F/B/W/T

*. Suitable for aircraft with max wing span up to 36m and max outer main wheel gear span up to 9.6m.

AIRCRAFT STAND	PCN
3 TO 14	66/R/B/W/T
39	71/R/B/W/T
40 TO 59L	88/R/C/W/T
60R TO 65	133/R/B/W/T
66 TO 69	66/R/B/W/T
NP7-NP11	77/F/B/W/T

CONTACT AIRCRAFT STAND	
3 TO 9 & 13, 14	
42 TO 64	
66 TO 69	

NOTE : AERONAUTICAL GROUND LIGHTS ARE NOT SHOWN ON THIS CHART

DATE OF AERONAUTICAL INFORMATION:

PRODUCING ORGANISATION: GMR HYDERABAD INTERNATIONAL AIRPORT LTD.