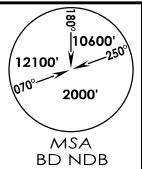


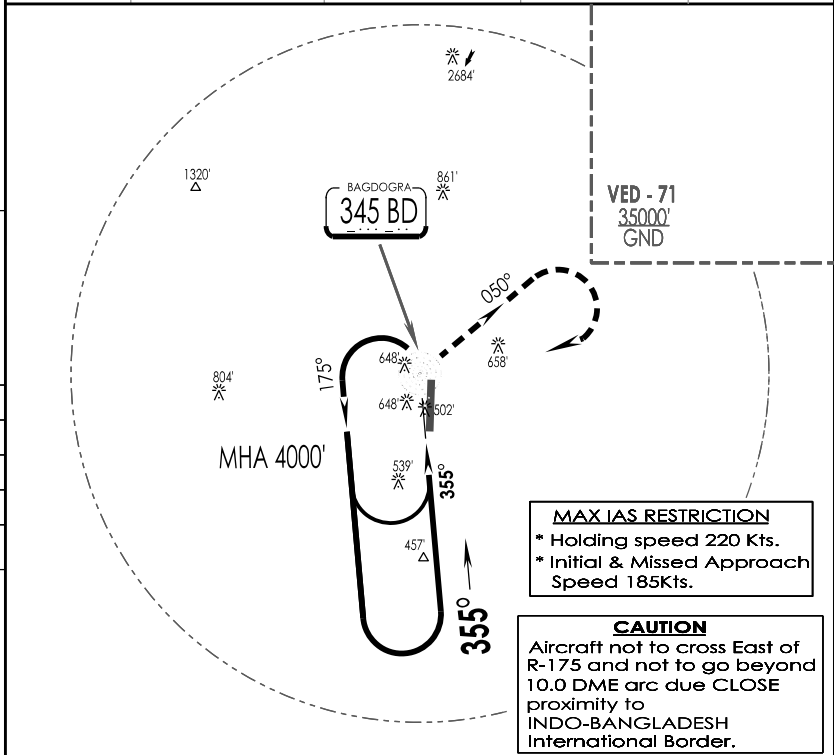
4-1

VEBD **IAF** **BAGDOGRA, INDIA**
BAGDOGRA 25 NOV 21 **Eff 23 DEC 21** **NDB RWY 36**

BAGDOGRA Approach 131.2		BAGDOGRA Tower 122.3, VC		ATIS 115.2
NDB BD 345	FINAL Apch Crs 355°	MDA (H) 950' (560')	Apt Elev 414' RWY 390'	
MISSED APCH: Turn RIGHT Climb on track 050° to 1800' then climbing turn RIGHT to join NDB hold at 4000' or as directed by ATC.				
Alt Set: hPa	Rwy Elev: 14 hPa	Trans level: By ATC	Trans alt: 13000'	

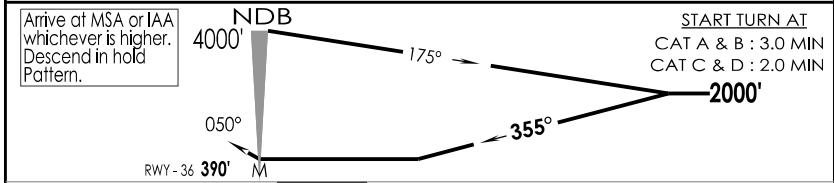


1 MIN = 1 NM
5 NM
0
5 NM



MAX IAS RESTRICTION
* Holding speed 220 Kts.
* Initial & Missed Approach Speed 185Kts.

CAUTION
Aircraft not to cross East of R-175 and not to go beyond 10.0 DME arc due CLOSE proximity to INDO-BANGLADESH International Border.



MAPt AT : NDB		CAT II	050°	4000'
STRAIGHT-IN LANDING RWY 36		PAPI-L	1800'	
non-CDFA		CIRCLE - TO - LAND		
MDA(H)				
FULL		ALS OUT		Max Kts
A	2000m	2700m		100
B				135
C	2200m	2900m		180
D				205
		MDA (H)	VIS	
		960' (546')	2800m	
		1060' (646')	3200m	
		1260' (846')	3800m	

CHANGES : NEW PROCEDURE IPDC, DTE OF OPS (T & H)