

TEL: 91-11-24632950 Extn: 2219/2233 AFS: VIDDYXAX FAX: 91-11-24615508 Email: gmais@aai.aero	INDIA AERONAUTICAL INFORMATION SERVICE AIRPORTS AUTHORITY OF INDIA RAJIV GANDHI BHAVAN SAFDARJUNG AIRPORT NEW DELHI – 110003	108/2018
		30 AUG 2018

File No. AAI/ATM/AIS/09-09/2018

Following supplement is issued for information, guidance and necessary action.

sd/-

DR. GURUPRASAD MOHAPATRA
CHAIRMAN
AIRPORTS AUTHORITY OF INDIA

[EFFECTIVE DATE: 11 OCT 2018]

AERODROME DATA

DAMAN AIRPORT (VADN)

AD 2. AERODROMES

VADN AD 2.1 AERODROME LOCATION INDICATOR AND NAME

VADN – DAMAN- COAST GUARD AIR STATION

VADN AD 2.2 AERODROME GEOGRAPHICAL AND ADMINISTRATIVE DATA

1	Aerodrome reference point coordinates and its site	202601.54N 0725032.67 E Location: In front of ATC Tower and Western side of main runway 03/21
2	Direction and distance of aerodrome reference point from the centre of the city or town which the aerodrome serves	4KM North of city Daman.
3	Aerodrome elevation and reference temperature	42 FT/ 31 DEG C
4	Magnetic, date of information and annual change	0.06 DEG E (2015)/0.07 DEG
5	Name of aerodrome operator, address, telephone, telefax, e-mail address, AFS address, website (if available)	Indian Coast Guard ICGAS Daman Airport Road Nani Daman Daman - 396 210
		Phone +91-260-2261004
		Fax +91-260-2405717/718

		AFS	VADNZTZX
		e-mail	notamdaman@gmail.com
6	Types of traffic permitted (IFR/VFR)	IFR/VFR	
7	Remarks	NIL	

VADN AD 2.3 OPERATIONAL HOURS

1	Aerodrome Operator	Indian Coast Guard
2	Custom and immigration	NIL
3	Health and sanitation	Service MI Room available within the airfield and Local government hospital available approximately 3 km from airport
4	AIS Briefing office	Facilitated with Flight Planning Section
5	ATS Reporting Office (ARO)	ATC Tower, Operational Hours (0200 to 0800 UTC) except Saturday, Sunday and Holidays
6	MET Briefing office	Met Office, 24 hrs
7	Air Traffic Service	ATS Services as per Controlled Aerodrome, Operational Hours (0200 to 0800 UTC) except Saturday, Sunday and Holidays
8	Fuelling	ATF-K-50 (Through IOC), (0200 to 1200 UTC) except Saturday, Sunday and Holidays
9	Handling	Handling only for Military Aircraft
10	Security	Security only for Military Aircraft
11	De-icing	NA
12	Remarks	NIL

VADN AD 2.4 HANDLING SERVICES AND FACILITIES

1	Cargo-handling facilities	NA
2	Fuel and oil types	ATF-K-50 (Through IOC), Oil- Nil
3	Fuelling facilities and capacity	Two fuelling Bowser available with capacity of 06 & 09 KL. Total storage capacity 140 KL
4	De-icing facilities	Not available
5	Hangar space for visiting aircraft	Not available

6	Repair facilities for visiting aircraft	Not available
7	Remarks	NIL

VADN AD 2.5 PASSENGER FACILITIES

1	Hotel(s) at or in the vicinity of aerodromes	Available within 3 to 4 km
2	Restaurant(s) at or in the vicinity of aerodromes	Available within 3 to 4 km
3	Transportation possibilities	NA
4	Medical Facilities	Service MI Room available within the airfield and Local government hospital available approximately 3 km from airport
5	Bank and post office at or in the vicinity of aerodromes	Available within 2 to 3 km
6	Tourist office	Available within 2 to 3 km
7	Remarks	NIL

VADN AD 2.6 RESCUE AND FIRE FIGHTING SERVICES

1	Aerodrome category for fire fighting	Within AD HR: CAT 4
2	Rescue equipment	Available as per category
3	Capability for removal of disabled aircraft	Crane with 12.5 tons (Safe load 7.5 tons)
4	Remarks	NIL

VADN AD 2.7 SEASONAL AVAILABILITY CLEARING

1	Type(s)of clearing equipment	NIL
2	Clearance priorities	NIL
3	Remarks	NIL

VADN AD 2.8 APRONS, TAXIWAYS AND CHECK LOCATIONS/POSITIONS DATA

1	Designation, surface and strength of aprons	Designation	Two dispersals for operations of Military Aircraft		
		Surface	Rigid (Concrete)		
		Strength	09/R/C/X/T		
2	Designation, width, surface and strength of taxiways	Designation	A	B	C
		Width	19.73M	18.27M	18.23M
		Surface	Bituminous	Concrete	Concrete
		Strength	08/F/C/X/T	09/R/C/X/T	09/R/C/X/T
3	Location and elevation of altimeter checkpoints	Location	Not available		
		Elevation			
4	Location of VOR checkpoints	202605.71N 0725042.80E (Near Dumbell 28)			
5	Position of INS checkpoints	NA			
6	Remarks	NIL			

VADN AD 2.9 SURFACE MOVEMENT GUIDANCE AND CONTROL SYSTEM AND MARKINGS

1	Use of aircraft standard identification signs, taxiway guidelines and visual docking/parking guidance system at aircraft stands	Marking available as per the service aircraft requirement			
2	Runway and taxiway markings and lights	RWY	Markings	Standard ICAO Marking RWY Threshold Marking, RWY Designation marking, Touch Down Zone Marking, Aiming Point Marking, RWY Centre line Marking, RWY Edge line Marking, Displaced Threshold Marking (for RWY 03 & RWY 28)	
			Lights	Runway edge lights, Threshold lights, Half way Lights, RWY end lights, PAPI for RWY 03 & RWY 21, APAPI for RWY 10 & RWY 28	
		TWY	Marking	ICAO Standard Taxi way centre line marking and edge line marking from dispersal to RWY, Taxi link 'A' & 'B'	
			Lights	TWY edge blue lights	
3	Stop bars (if any)	NIL			
4	Remarks	NIL			

VADN AD 2.10 AERODORME OBSTACLES

RWY/Area affected	Obstacle type,	Coordinates	Elevation FT	Marking /LGT	Remarks
1	2	3	4	5	6
APCH-03 TKOF-21	Building	202501 N 0725002 E	95 FT	UNLGT	RWY 03 threshold displaced by 200m as this building falls in the approach funnel and height of the building is more than the permissible height. POLE
APCH-03 TKOF-21	Building	202524 N 0725009 E	52 FT	LGT	---
APCH-03 TKOF-21	Building	202503 N 0724948 E	151 FT	LGT	---
APCH-03 TKOF-21	Building	202453 N 0725002 E	102 FT	LGT	---
APCH-03 TKOF-21	Light House	202425 N 0724951 E	144 FT	LGT	---
APCH-03 TKOF-21	Building	202407 N 0724951 E	190 FT	LGT	---
APCH-21 TKOF-03	Hill	202645 N 0725102 E	150 FT	UNLGT	---
APCH-21 TKOF-03	Building	202728 N 0725117 E	128 FT	UNLGT	---
APCH-28 TKOF-10	Mast	202655 N 0725220 E	151 FT	UNLGT	---
APCH-28 TKOF-10	Chimney	202545 N 0725423 E	253 FT	UNLGT	---
In circling area and at AD	Tower	202722 N 0725245 E	177 FT	LGT	---
In circling area and at AD	Chimney	202743 N 0725319 E	249 FT	UNLGT	---
In circling area and at AD	Tower	20 26 59 N 072 51 23 E	167 FT	UNLGT	---
In circling area and at AD	Tower	20 26 55 N 072 52 20 E	236 FT	LGT	---
In circling area and at AD	Tower	202643 N 0725115 E	141 FT	LGT	---
In circling area and at AD	Hill	202622 N 0725204 E	381 FT	UNLGT	---

In circling area and at AD	Building	202623 N 0725103 E	157 FT	UNLGT	---
In circling area and at AD	Water Tank	202614 N 0725114 E	177 FT	LGT	
In circling area and at AD	Building	202542 N 0725044 E	157 FT	LGT	
In circling area and at AD	Building	202537 N 0725030 E	56 FT	LGT	
In circling area and at AD	Electric pole	202529 N 0725110 E	118 FT	UNLGT	
In circling area and at AD	Building	202527 N 0725004 E	118 FT	LGT	
In circling area and at AD	Tower	203227 N 0725458 E	194 FT	LGT	
In circling area and at AD	Building	202520 N 0725027 E	131 FT	LGT	
In circling area and at AD	Building	202518 N 0725019 E	85 FT	LGT	
In circling area and at AD	Building	202512 N 0725031 E	128 FT	LGT	
In circling area and at AD	Building	202503 N 0724950 E	135 FT	LGT	
In circling area and at AD	Hill	201929 N 0725059 E	758 FT	UNLGT	
In circling area and at AD	Tower	202442 N 0725150 E	190 FT	LGT	
In circling area and at AD	Building + Mast	202345 N 0725331 E	226 FT	LGT	
In circling area and at AD	Electric pole	202229 N 0725138 E	295 FT	UNLGT	

VADN AD 2.11 METEOROLOGICAL INFORMATION PROVIDED

1	Name of the associated meteorological office	Met Office ICGAS Daman
2	Hours of service and where applicable the designation of the responsible meteorological office outside these hours	24 hrs
3	Office responsible for preparation of TAFs and periods of validity and interval of issuance of the forecasts	Met Office ICGAS Daman 0300 UTC-1200 UTC & 1200 UTC -2100 UTC
4	Availability of the trend forecast for the aerodrome and interval of issuance	0730 EF-1830 EF & 1830EF -2330 EF
5	Information on how briefing and/or consultation is provided	Met documentation provided to Aircrew in Met Office
6	Types of flight documentation supplied and language(s) used in flight documentation	Met T-3 (Within 500 NM), Met T-4 (Beyond 500 NM) & Met T-10 (as and when required) in English
7	Charts and other information displayed or available for briefing or consultation	W3 (Surface Chart for MSL pressure) W4 (Upper air Charts for all significant levels) W3 (C)- Change Chart for changing of current weather parameters T phigram-for Upper levels analysis of weather parameters
8	Supplementary equipments available for providing information on meteorological conditions, e.g. weather radar and receiver for satellite images	Satellite image received from IMD website by Internet
9	The Air Traffic services units(s) provided with meteorological information	ATC Daman
10	Additional information e.g. concerning any limitation of service	NA

VADN AD 2.12 RUNWAY PHYSICAL CHARACTERISTICS

Designations	TRUE Bearings	Dimensions of RWY (M)	Strength of pavement (PCN) and associated data and surface of each runway and associated stopway	Geographical coordinates for threshold and runway end
1	2	3	4	5
03	026 DEG	1801 X 45	14/F/C/X/T Flexible	THR: 202531.06N 0725016.98E END 202618.13N 0725043.45E
21	206 DEG	1801 X 45	14/F/C/X/T Flexible	THR: 202618.13N 0725043.45E END 202525.18N 0725016.98E
10	095 DEG	1035 X 25	08/F/C/X/T Flexible	THR: 202607.99N 0725009.81E END 202605.63N 0725008.54E
28	275 DEG	1035 X 25	08/F/C/X/T Flexible	THR: 202606.00N 0725040.20E END 202608.08N 0725008.64E
THR elevation and highest elevation of TDZ of precision APP RWY	Slope of runway and associated stopway	Dimensions of stopway (M)	Dimensions of clearway (M)	Dimensions of strips (M)
6	7	8	9	10
THR: 29.42 FT TDZ: 28.44 FT	0.016%	Not available	Not available	1921 X 140
THR: 41.79 FT TDZ: 40.66 FT	0.019%	Not available	Not available	1921 X 140
THR: 26.28 FT	0.97%	Not available	Not available	1155 X 55
THR: 36.42 FT	0.97%	Not available	Not available	1155 X 55

Dimensions of runway end safety areas (M)	Location (which runway end) and description of arresting system (if any)	Existence of an obstacle-free zone	Remarks.
11	12	13	14
NIL	NIL	NIL	NIL
NIL	NIL	NIL	NIL
NIL	NIL	NIL	RWY 10/28 available for helicopter operations only.
NIL	NIL	NIL	RWY 10/28 available for helicopter operations only.

VADN AD 2.13 DECLARED DISTANCES

RWY Designator	TORA (M)	TODA (M)	ASDA (M)	LDA (M)	Remarks Including runway entry or start point where alternative reduced declared distances have been declared.
1	2	3	4	5	6
03	1801	1801	1801	1601	
21	1801	1801	1801	1801	
10	1035	1035	1035	1000	
28	1035	1035	1035	919	

VADN AD 2.14 APPROACH AND RUNWAY LIGHTING

Runway Designator	Type, length and intensity of approach lighting system;	Runway threshold lights, colour and wing bars;	Type of visual slope indicator system	Length of runway touchdown zone lights;
1	2	3	4	5
03	NIL	GREEN Wing bar not available	PAPI	Not Available
21	NIL	GREEN Wing bar not available	PAPI	Not Available
10	Not Available	GREEN Wing bar not available	APAPI	Not Available
28	Not Available	GREEN Wing bar not available	APAPI	Not Available

Length, spacing, colour and intensity of runway centre line lights	Length, spacing, colour and intensity of runway edge lights	Colour of runway end lights and wing bars	Length and colour of stopway lights	Remarks
6	7	8	9	10
NIL	1801M 60M LIH	RED Wing bar not available	Not Available	Five omni directional RWY middle marker white light installed on each side of RWY 03/21 to indicate half runway length.
NIL	1801M 60M LIH	RED Wing bar not available	Not Available	Five omni directional RWY middle marker white light installed on each side of RWY 03/21 to indicate half runway length.
NIL	1035M 60M LIH	RED Wing bar not available	Not Available	Nil
NIL	1035M 60M LIH	RED Wing bar not available	Not Available	Nil

VADN AD 2.15 OTHER LIGHTING, SECONDARY POWER SUPPLY

1	Location, characteristics and hours of operation of aerodrome beacon/identification beacon (if any)	ABN	On the top of ATC Tower, 30 Flashes per minutes alternate White & Green, during night/low visibility operation.
		IBN	NA
2	Location and lighting (if any) of anemometer/landing direction indicator;	LDI	Available near Signal square
		Anemometer	On top of ATC tower
3	Taxiway edge and taxiway centre line lights;	Edge	Blue edge lights with 15 mtr intervals
		Centre line	NA

4	Secondary power supply including switch-over time;	Stand by Generator available with 10 sec switch over time
5	Remarks	ABN position: 202557N 0725042E, HGT: 27.3M AMSL

VADN AD 2.16 HELICOPTER LANDING AREA

1	Geographical coordinates of the geometric centre of touchdown and lift-off (TLOF) or of each threshold of final approach and take-off (FATO) area	All Helicopters landing and take-off from runways only
2	TLOF and/or FATO area elevation:	NIL
3	TLOF and FATO area dimensions to the nearest metre or foot, surface type, bearing strength and marking;	NIL
4	True bearings of FATO;	NIL
5	Declared distances available,	NIL
6	Approach and FATO lighting;	NIL
7	Remarks	NIL

VADN AD 2.17 AIR TRAFFIC SERVICES AIRSPACE

1	Airspace designation, geographical coordinates and lateral limits	Area bounded by lines joining points 200303N 0724958E; 202003N 0722558E; 204103N 0722958E; 205103N 0724958E; 204203N 0730958E; 200703N 0730758E to point of origin.
2	Vertical limits	SFC TO FL060
3	Airspace classification	Class 'D'
4	Call sign and language(s) of the air traffic services unit providing service;	Daman Tower
5	Transition altitude	4000 FT
6.	Hours of applicability	HO 0200-0800 (UTC) except Sat/Sun & Wednesday is maintenance/ non-flying day. Operational flying permitted with 48 hrs prior notice.
6	Remarks	NIL

VADN AD 2.18 AIR TRAFFIC SERVICES COMMUNICATION FACILITIES

Service Designation	Call sign	Channel(s)	SATVOICE Number(s), if available
1	2	3	4
TWR	DAMAN TOWER	118.700 MHz (MAIN) 119.700 MHz (S/BY) 120.700 MHz (APP)	NIL
Logon address, as appropriate	Hours of operation	Remarks	
5	6	7	
NIL	0200-0800 (UTC) except Sat/Sun & holidays)	---	

VADN AD 2.19 RADIO NAVIGATION AND LANDING AIDS

Type of aids, magnetic and type of supported operation for ILS/MLS, basic GNSS, SBAS and GBAS, and for VOR/ILS/MLS station used for technical line-up of the aid	Identification	Frequency(ies), Channel number(s), Service provider, and reference path identifier(s) (RPI), as appropriate	Hours of operation, as appropriate;
1	2	3	4
DVOR	DMN	113.300 MHz	0200-0800 (UTC) except Sat/Sun & holidays
Geographical coordinates of the position of the transmitting antenna	Elevation of transmitting antenna of DME/ elevation of GBAS reference point	Service volume radius from the GBAS reference point	Remarks
5	6	7	8
202632.52N 0725115.95 E	139.40 FT	-----	DME collocated with DVOR

VADN AD 2.20 LOCAL AERODROME REGULATIONS:

NIL

VADN AD 2.21 NOISE ABATEMENT PROCEDURES:

NIL

VADN AD 2.22 FLIGHT PROCEDURES

NIL

VADN AD 2.23 ADDITIONAL INFORMATION`

- i. Wednesday will be observed as maintenance/non flying day. Operational flying will only be permitted with 48 hrs prior notice
- ii. Operational/training sorties are undertaken including Saturdays, Sundays and holidays. Aircraft to contact positively on primary frequency 118.700 MHz (Secondary frequency 119.700 MHz prior to entering Daman local flying area VAR-47 and CTR. All aircraft transiting through Daman airspace to maintain minimum 10NM around VOR/DME demarcated as circuit for training purpose.
- iii. All aircraft at FL060 and below must obtain positive clearance from Daman Control Frequency 118.700 MHz before entering Daman local flying area bounded by coordinates 2003N 07250E, 2010N 07150E, 2113N 07206E, 2120N 07237E, 2100N 07150E, 2049N 07257E.
- iv. Watch Towers locations in no construction zone. Details are as follows:

S. No.	PSN	DIST FM RWY C/L	HGT	LGT
1	PORT SIDE DUMBELL 03	43.01M	06M	LGT
2	PORT SIDE RWY MM 21	61.33M	06M	LGT
3	PORT SIDE DUMBELL 21	61.81M	06M	LGT
4	PORT SIDE MM 10	39.15M	06M	LGT
5	RIGHTSIDE DUMBELL 28	37.59M	06M	LGT

- v. PAPI installed and commissioned on RWY 03 and RWY 21. For RWY 21 at a distance of 291M from threshold and 15M from RWY edge for RWY 03 at a distance of 185M from displaced threshold and 15M from RWY edge. Approach angle: 03deg.

VADN AD 2.24 CHARTS RELATED TO AN AERODROME

1. VOR DME Procedure RWY 03
2. VOR DME Procedure RWY 21

NOTE: DATA PROVIDED BY INDIAN COAST GUARD

CANCELLATION:

1. NOTAM C0968/09 of VABBYNYX
2. NOTAM C0972/09 of VABBYNYX
3. NOTAM C0973/09 of VABBYNYX
4. NOTAM C1010/09 of VABBYNYX
5. NOTAM C0501/10 of VABBYNYX
6. NOTAM C0328/11 of VABBYNYX
7. NOTAM C0337/11 of VABBYNYX
8. NOTAM C0572/11 of VABBYNYX
9. NOTAM C0788/13 of VABBYNYX
10. NOTAM C0982/13 of VABBYNYX
11. NOTAM C0543/14 of VABBYNYX
12. NOTAM C0063/15 of VABBYNYX
13. NOTAM C0811/16 of VABBYNYX

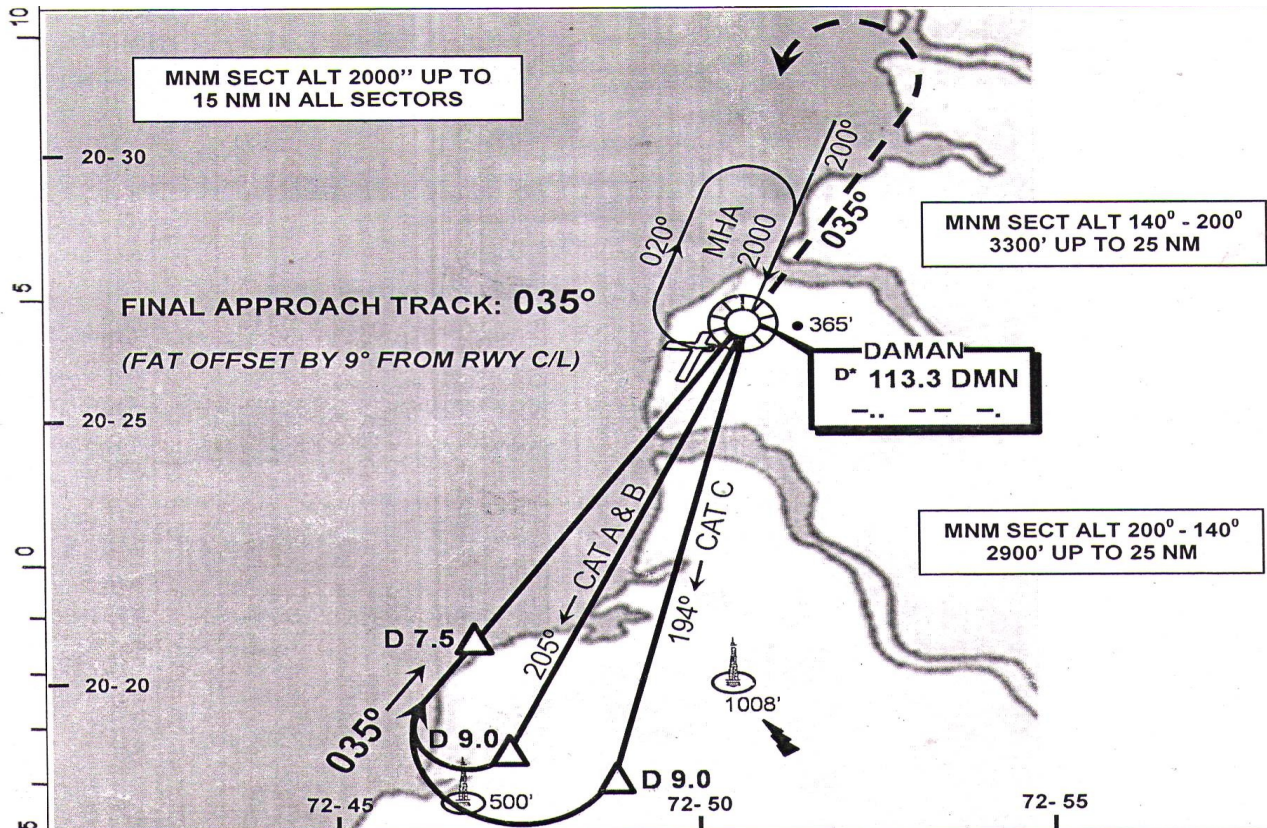
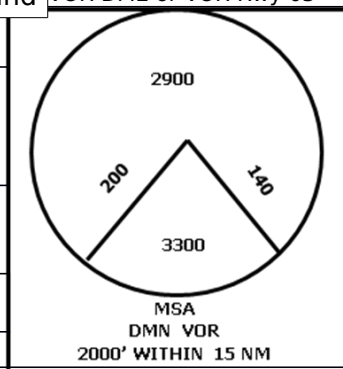
INSTRUMENT APPROACH CHART

DAMAN, INDIA

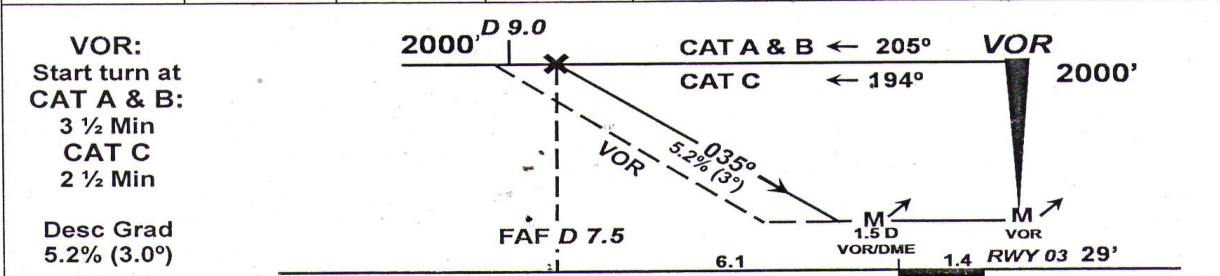
CAT A, B and VOR DME or VOR Rwy 03

BRIEFING STRIP

TOWER (P) 118.7		TOWER (S) 120.7		
VOR DMN 113.3	FINAL APCH CRS 035°	VOR DME Minimum Alt D5.5 2000' (1971')	VOR DME OCA (H) 620' (591')	AIRPORT ELEV 42' RUNWAY ELEV 29'
		VOR DME Minimum Alt No FAF	VOR OCA (H) 670' (641')	
MISSED APCH: Climb STRAIGHT AHEAD to 1100', then climbing turn LEFT to join VOR holding at 2000', or as directed by ATC.				
Alt Set:hPa Rwy Elev: 1 hPa Trans level: By ATC Trans Alt: 4000'				



VOR DME	DMN DME	7.5	7.0	6.0	5.0	4.0
	ALTITUDE	2000	1860	1540'	1230'	910'



COAST GUARD

Gnd speed-Kts	80	100	120	140	160			
ROD (FT/MIN)	425	530	635	740	850		PAPI L 1100'	
MAP at VOR for VOR approach and 1.5D for VOR DME approach								
STRAIGHT-IN-LANDING R/W 03				CIRCLE-TO-LAND				
VOR DME OCA (H) 620' (591')		VOR OCA (H) 670' (641')		Prohibited within Sector 070 (M) to 160 (M) from VOR				
BF		BF		MAX Kts		OCA (H)		
A	VIS 2400 m	VIS 2400 m		100		670' (641')		
B	VIS 2400 m			135		3600 m		
C	VIS 2800 m	VIS 2800 m		180		670' (641')		
D	NOT APPLICABLE			NOT APPLICABLE				

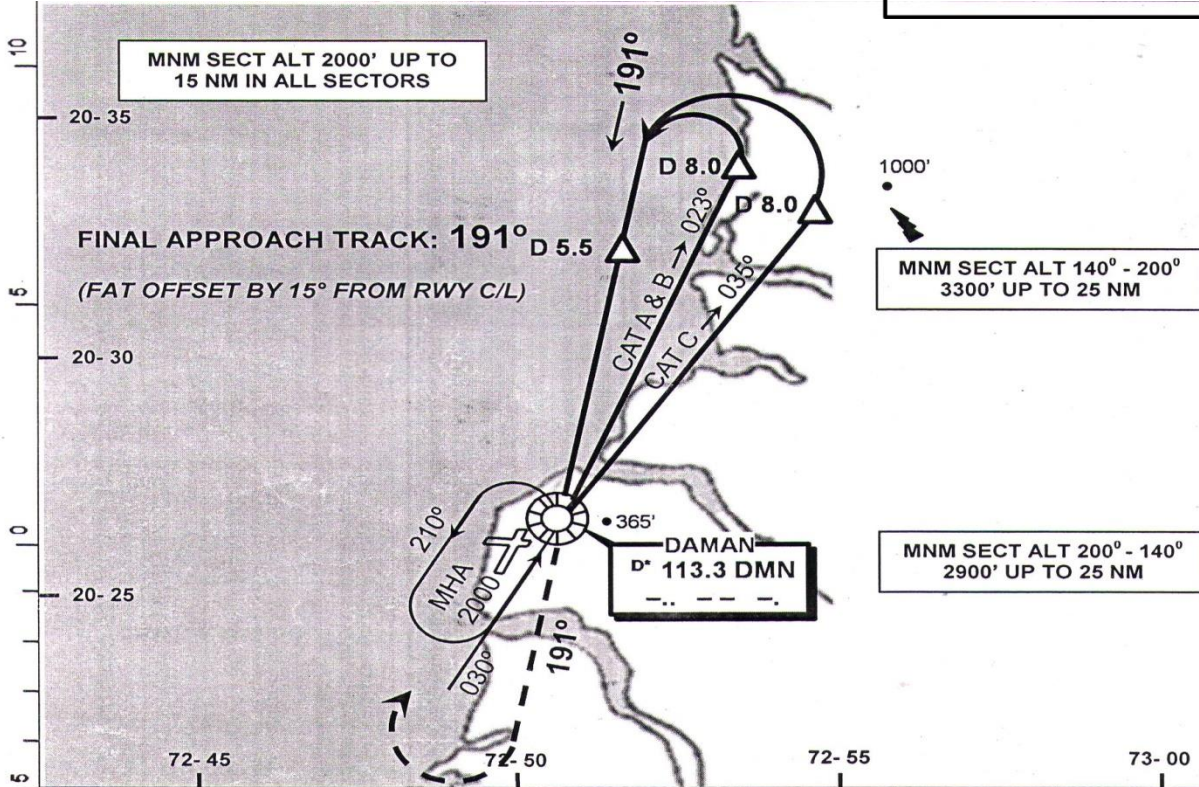
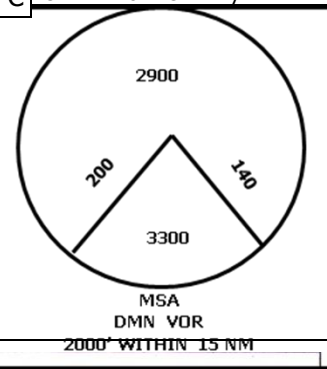
INSTRUMENT APPROACH CHART

DAMAN, INDIA

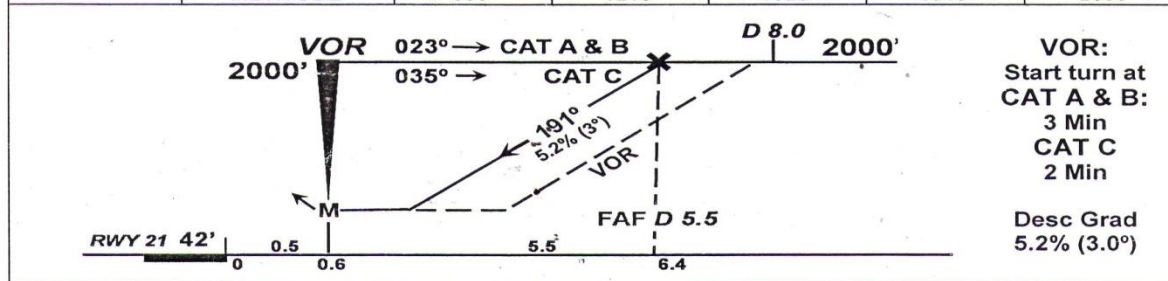
CAT A, B and C VOR DME or VOR Rwy 21

BRIEFING STRIP

TOWER (P) 118.7		TOWER (S) 120.7	
VOR DMN 113.3	FINAL APCH CRS 191°	VOR DME Minimum Alt D5.5 2000' (1958')	VOR DME OCA (H) 620' (578')
		VOR DME Minimum Alt No FAF	VOR OCA (H) 670' (628')
AIRPORT ELEV 42' RUNWAY ELEV 42'			
MISSED APCH: Climb STRAIGHT AHEAD to 1100', then climbing turn RIGHT to join VOR holding at 2000', or as directed by ATC.			
Alt Set: hPa Rwy Elev: 1 hPa Trans level: By ATC Trans Alt: 4000'			



VOR DME	DMN DME ALTITUDE	2.0	3.0	4.0	5.0	5.5
		890'	1210'	1520'	1840'	2000'



COAST GUARD

Gnd speed-Kts	80	100	120	140	160		PAPI L	1100'
ROD (FT/MIN)	425	530	635	740	850			
MAP at VOR								
STRAIGHT-IN-LANDING R/W 21					CIRCLE-TO-LAND			
VOR DME OCA (H) 620' (578')		VOR OCA (H) 670' (628')		Prohibited within Sector 070 (M) to 160 (M) from VOR				
BF		BF		MAX Kts		OCA (H)		
A	VIS 2400 m	VIS 2400 m		100		670' (628')		
B	VIS 2400 m			135		3600 m		
C	VIS 2800 m	VIS 2800 m		180		670' (628')		
D	NOT APPLICABLE				NOT APPLICABLE			