

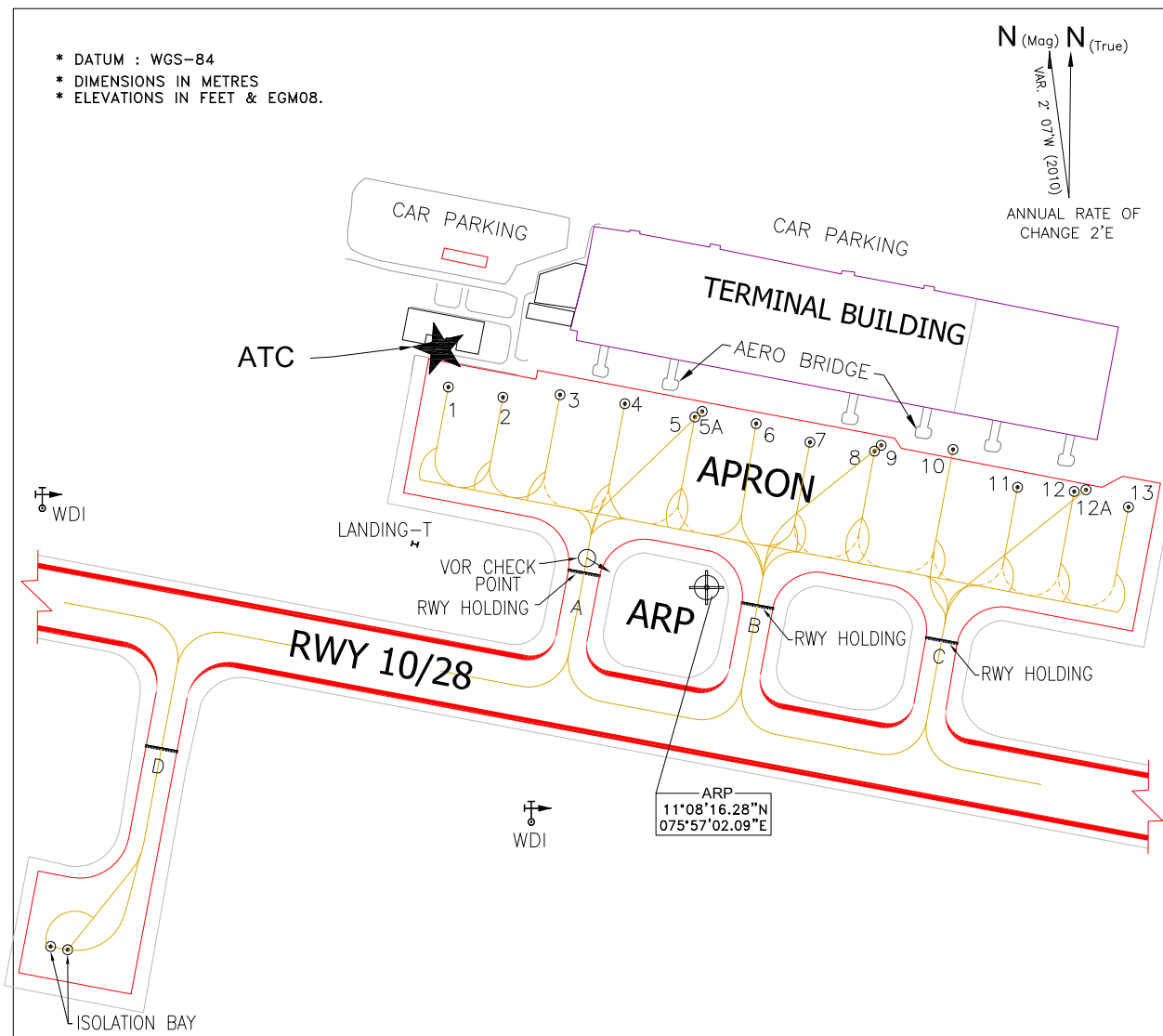
AIRCRAFT PARKING/
DOCKING CHART

APRON ELEV. 334ft.

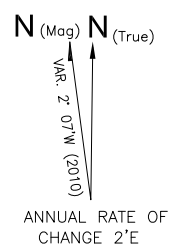
TWR 123.35
APP 122.95

CALICUT, INDIA

CALICUT AIRPORT



* DATUM : WGS-84
* DIMENSIONS IN METRES
* ELEVATIONS IN FEET & EGM08.



LEGEND

AIRCRAFT STAND	2
TAXI-HOLDING POSITION	———
VOR CHECK POINT	⊙→

SCALE

TAXIWAY DETAILS

TWY	WIDTH	SURFACE	STRENGTH
A	23m	CONCRETE/ ASPHALT	55/R/A/W/T
B	23m	CONCRETE	58/R/A/W/T
C	23m	CONCRETE	63/R/A/W/T
D	23m	CONCRETE	58/R/A/W/T

STAND NO.	AIRCRAFT STAND CO-ORDINATES	ELEV.	PCN	SUITABILITY
1	11°08'21.085"N, 075°56'55.852"E	332ft.	68/R/A/W/T	WING SPAN LESS THAN 36M, LENGTH LESS THAN 45M
2	11°08'20.835"N, 075°56'57.173"E	333ft.	53/R/A/W/T	WING SPAN LESS THAN 36M, LENGTH LESS THAN 45M
3	11°08'20.892"N, 075°56'58.554"E	334ft.	53/R/A/W/T	WING SPAN LESS THAN 36M, LENGTH LESS THAN 45M
4	11°08'20.673"N, 075°57'00.121"E	334ft.	53/R/A/W/T	WING SPAN LESS THAN 45M, LENGTH LESS THAN 55M
5	11°08'20.350"N, 075°57'01.817"E	334ft.	53/R/A/W/T	WING SPAN LESS THAN 39M, LENGTH LESS THAN 55M
5A	11°08'20.483"N, 075°57'01.993"E	333ft.	53/R/A/W/T	WING SPAN LESS THAN 65M, LENGTH LESS THAN 75.5M
6	11°08'20.18999"N, 075°57'03.29828"E	333ft.	53/R/A/W/T	WING SPAN LESS THAN 36M, LENGTH LESS THAN 45M
7	11°08'19.741"N, 075°57'04.598"E	333ft.	53/R/A/W/T	WING SPAN LESS THAN 36M, LENGTH LESS THAN 45M
8	11°08'19.52258"N, 075°57'06.16046"E	333ft.	53/R/A/W/T	WING SPAN LESS THAN 45M, LENGTH LESS THAN 55M
9	11°08'19.660"N, 075°57'06.321"E	333ft.	68/R/A/W/T	WING SPAN LESS THAN 65M, LENGTH LESS THAN 75.5M
10	11°08'19.55361"N, 075°57'08.05879"E	334ft.	68/R/A/W/T	WING SPAN LESS THAN 52M, LENGTH LESS THAN 62M
11	11°08'18.64609"N, 075°57'09.61947"E	334ft.	68/R/A/W/T	WING SPAN LESS THAN 36M, LENGTH LESS THAN 45M
12	11°08'18.54482"N, 075°57'10.98915"E	333ft.	68/R/A/W/T	WING SPAN LESS THAN 36M, LENGTH LESS THAN 45M
12A	11°08'18.18258"N, 075°57'11.27572"E	333ft.	68/R/A/W/T	WING SPAN LESS THAN 65M, LENGTH LESS THAN 75.5M
13	11°08'18.16678"N, 075°57'12.30143"E	332ft.	68/R/A/W/T	WING SPAN LESS THAN 36M, LENGTH LESS THAN 45M
ISOLATION BAY	11°08'07.670"N, 075°56'46.596"E	319ft.	58/R/A/W/T	
ISOLATION BAY	11°08'07.748"N, 075°56'46.183"E	319ft.	58/R/A/W/T	

DATE OF AERONAUTICAL INFORMATION,
NOVEMBER, 2020

DRG. No.AAI/57-PDC/2020