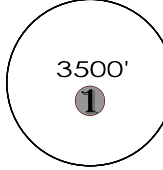


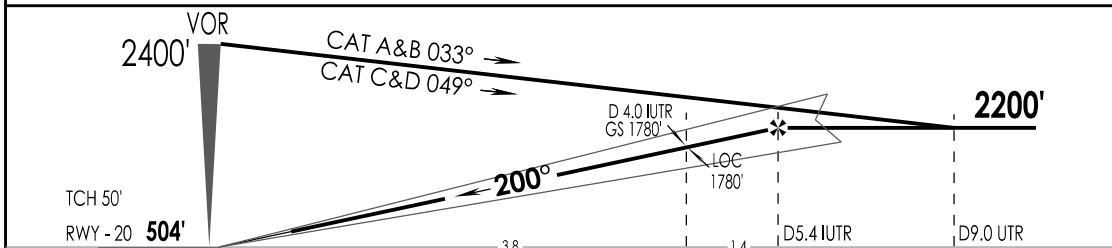
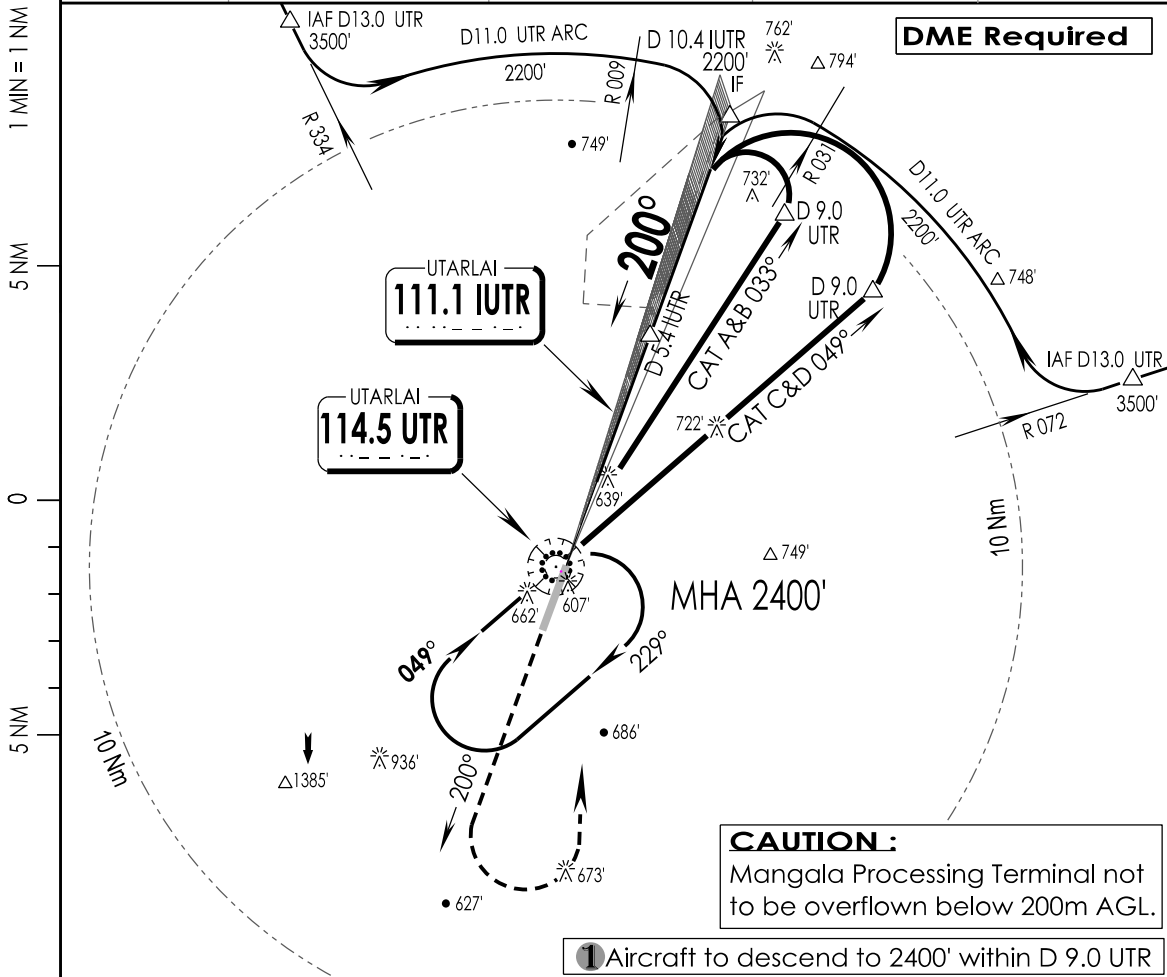
1-3

VIUT
UTTARLAI

IAF
14 FEB 19

UTTARLAI, INDIA
CAT II ILS RWY 20

UTTARLAI Tower 123.2, VC, UC		UTTARLAI Approach 123.2, VC, UC		ATIS 114.5		
VOR UTR 114.5	LOC IUTR 111.1	FINAL Apch Crs 200°	GS D 4.0 IUTR 1780'	DA (H) As per table		Apt Elev 505' RWY 504'
MISSED APCH: Climb STRAIGHT ahead to 1600', then climbing Turn Left to join VOR hold at 2400' or as directed by ATC.						MSA UTR VOR
Alt Set: hPa		Rwy Elev: 17 hPa		Trans level: By ATC	Trans alt: 4000'	



GND SPEED KTS	80	100	120	140	160	180	↑ 1600'	2400' ↓
GRADIENT 5.24 %	425	531	637	743	849	955		

STRAIGHT-IN LANDING RWY 20			
CAT II ILS			
DA (H)	RA	AB: 615' (111')	CD: 137'
FULL			

A	RVR 300m
B	
C	RVR 400m
D	

LIGHTING : CAT-II (20), CL15M(02/20), HIRL 60 M (02/20), TL (02/20), HIALS (20), PAPI (02L/20R), SALS (02)

CHANGES : LIGHTING IPDC, DTE OF OPS (T & H)