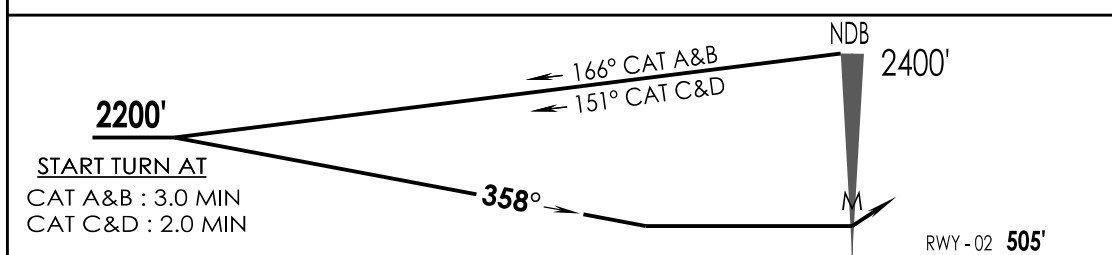
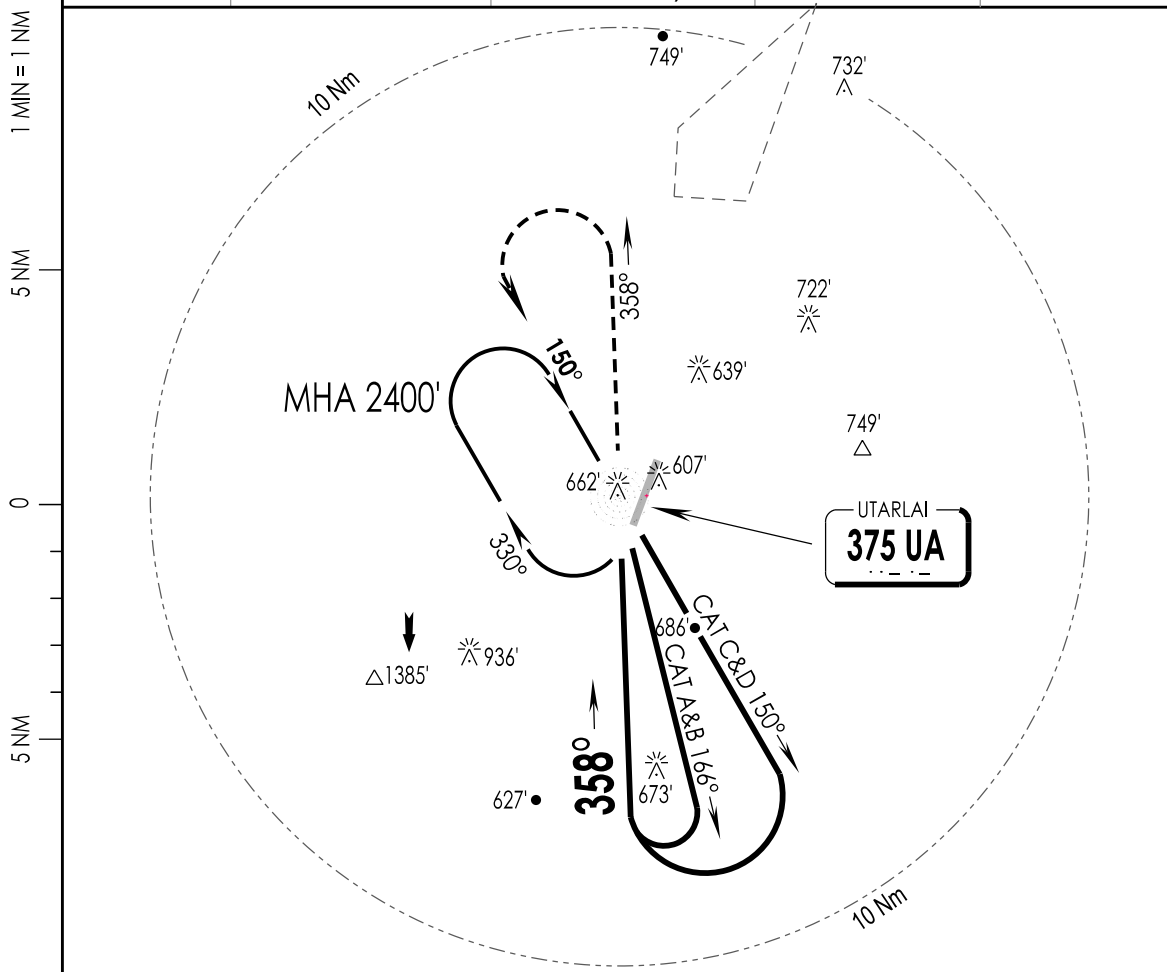


4-2

VIUT IAF UTTARLAI, INDIA
UTTARLAI 27 JUN 19 NDB RWY 02 (AB:ST-IN, CD:V/C)

UTTARLAI Tower 123.2, VC, UC		UTTARLAI Approach 123.2, VC, UC		ATIS 114.5	<div style="border: 1px solid black; border-radius: 50%; width: 60px; height: 60px; margin: 0 auto; display: flex; align-items: center; justify-content: center;">3500'</div> <p>MSA UA NDB</p>
NDB UA 375	FINAL Apch Crs 358°	MDA (H) As per table		Apt Elev 505' RWY 505'	
MISSED APCH: Climb STRAIGHT ahead to 1600', then climbing Turn LEFT to join NDB hold at 2400' or as directed by ATC.					
Alt Set: hPa	Rwy Elev: 17 hPa	Trans level: By ATC	Trans alt: 4000'		



MAPt AT NDB		↑ 1600'		2400' ↙	
STRAIGHT-IN LANDING RWY 02				CIRCLE - TO - LAND	
non-CDFA					
MDA(H) AB: 970' (465')					
	IALS	ALS OUT	Max Kts	MDA (H)	VIS
A	RVR 2000m	RVR 2400m	100	1170' (665')	3300m
B			135		
C			180	1330' (825')	3800m
D	N/A		205		

LIGHTING : CAT-II (20), CL15M(02/20), HIRL 60 M (02/20), TL (02/20), HIALS (20), PAPI (02L/20R), SALS (02)
CHANGES : NEW PROCEDURE IPDC, DTE OF OPS (T & H)