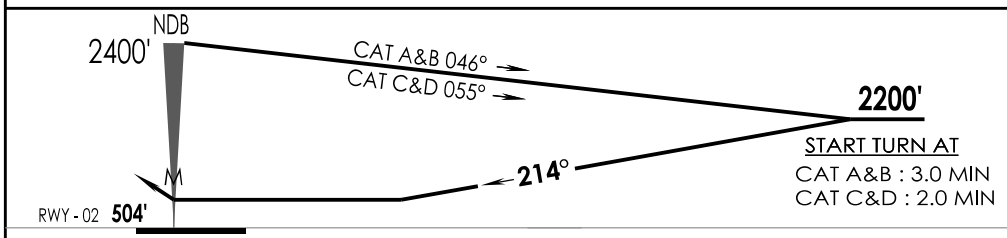
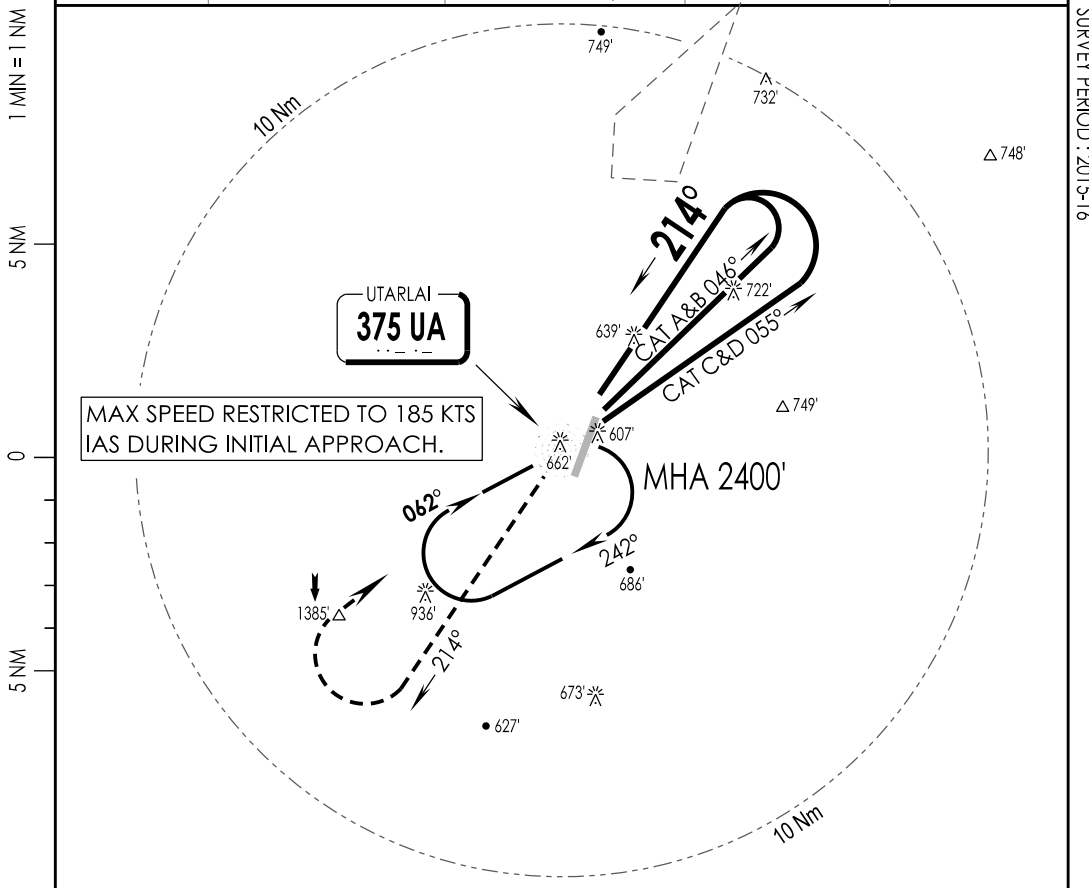


4-1

VIUT IAF UTARLAI, INDIA  
UTTARLAI 14 OCT 19 NDB RWY 20

UTTARLAI Tower 123.2, VC, UC	UTTARLAI Approach 123.2, VC, UC	ATIS 114.5	3500'	
NDB UA 375	FINAL Apch Crs 214°	MDA (H) 1170'(665')		Apt Elev 505' RWY 504'
<b>MISSED APCH:</b> Climb STRAIGHT ahead to 1600', then climbing Turn Right to join NDB hold at 2400' or as directed by ATC.				
Alt Set: hPa	Rwy Elev: 17 hPa	Trans level: By ATC	Trans alt: 4000'	MSA UA NDB



MAPt AT NDB		↑ 1600'	↗ 2400'
STRAIGHT-IN LANDING RWY 20		CIRCLE - TO - LAND	
non-CDFA		Max Kts	MDA (H)
MDA(H)	1170' (665')		
FULL	ALS OUT		
A	RVR 2600m	100	1170' (665')
B		135	
C	RVR 2800m	180	1330' (825')
D		205	3800m

LIGHTING : CAT-II (20), SALS (02), PAPI (02/20)

CHANGES : NEW PROCEDURE

IPDC, DTE OF OPS (T & H)