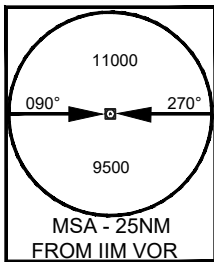


STANDARD DEPARTURE CHART
INSTRUMENT (SID)
CHART

AERODROME ELEV 2544ft.
THR RWY 22 ELEV 2544ft

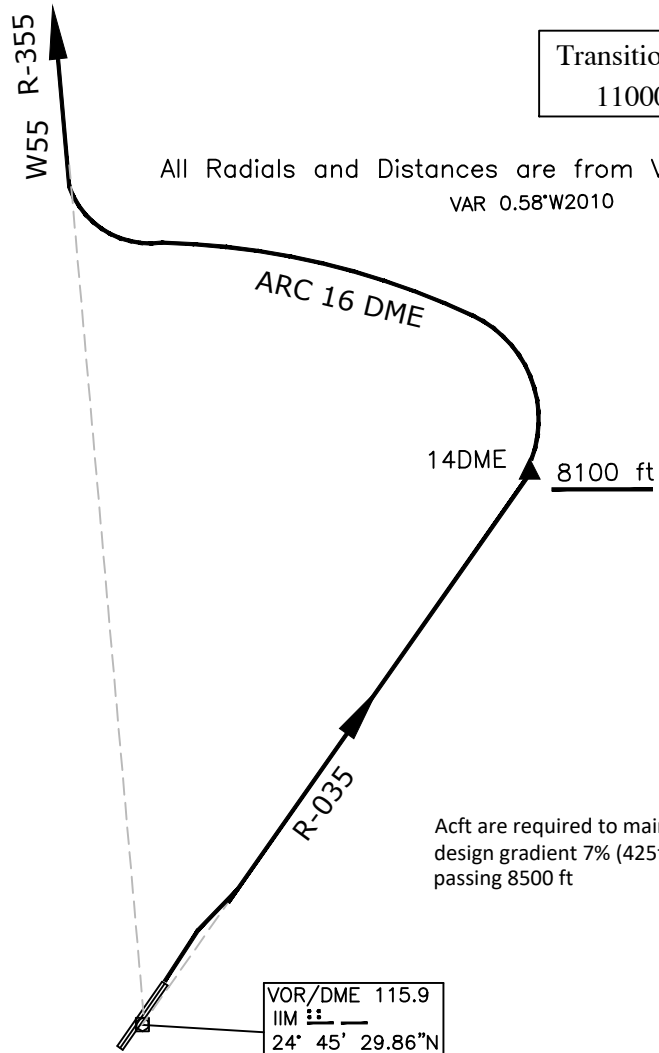
TWR.124.35

IMPHAL
INDIA
DIMAPUR 1
RWY 04



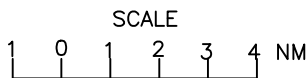
Transition Altitude
11000 ft

All Radials and Distances are from VOR (115.9 IIM)
VAR 0.58°W2010



Description
Climb straight ahead. Passing 3000Ft, establish R-035. At 14 DME turn left to intercept 16 DME arc and then establish R-355 to join W55 outbound. Cross R-035/14 DME at or above 8100 ft

Acft are required to maintain procedure design gradient 7% (425ft/NM) min. until passing 8500 ft



VOR/DME 115.9
IIM
24° 45' 29.86"N
093° 53' 51.79"E

DRG. NO. AAI/9 -SID/11/31-12-2020
AIRPORTS AUTHORITY OF INDIA