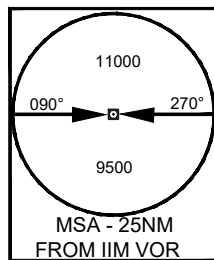


STANDARD DEPARTURE CHART
INSTRUMENT (SID)
CHART

AERODROME ELEV 2544ft.
THR RWY 22 ELEV 2544ft

TWR.124.35

IMPHAL
INDIA
SILCHAR 1
RWY 04



Transition Altitude
11000 ft

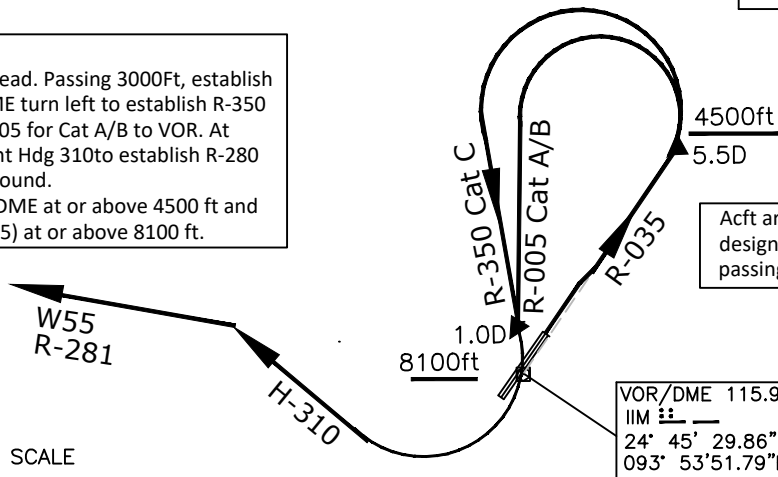
For Cat C Speed restricted to 204KT IAS MAX until interception of R-350

Description

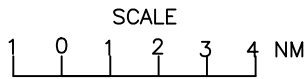
Climb straight ahead. Passing 3000ft, establish R-035. At 5.5 DME turn left to establish R-350 for Cat C and R-005 for Cat A/B to VOR. At 1.0 DME turn right Hdg 310 to establish R-280 to join W55 outbound.

Cross R-035/5.5 DME at or above 4500 ft and 1 DME (R-350/005) at or above 8100 ft.

Acft are required to maintain procedure design gradient 7% (425ft/NM) min.until passing 8500 ft



VOR/DME 115.9
IIM
24° 45' 29.86"N
093° 53' 51.79"E



All Radials and Distances are from VOR (115.9 IIM)
VAR 0.58°W2010

DRG. NO. AAI/6 -SID/11/31-12-2020
AIRPORTS AUTHORITY OF INDIA