

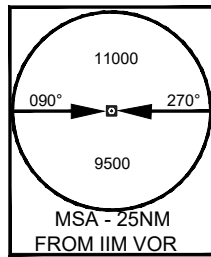
STANDARD DEPARTURE CHART
INSTRUMENT (SID)
CHART

AERODROME ELEV 2544ft.
THR RWY 04 ELEV 2538ft

TWR. 124.35

IMPHAL
INDIA
LENGPUI 2
RWY 22

All Radials and Distances are from VOR (115.9 IIM)
VAR 0.58°W2010

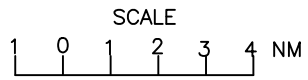
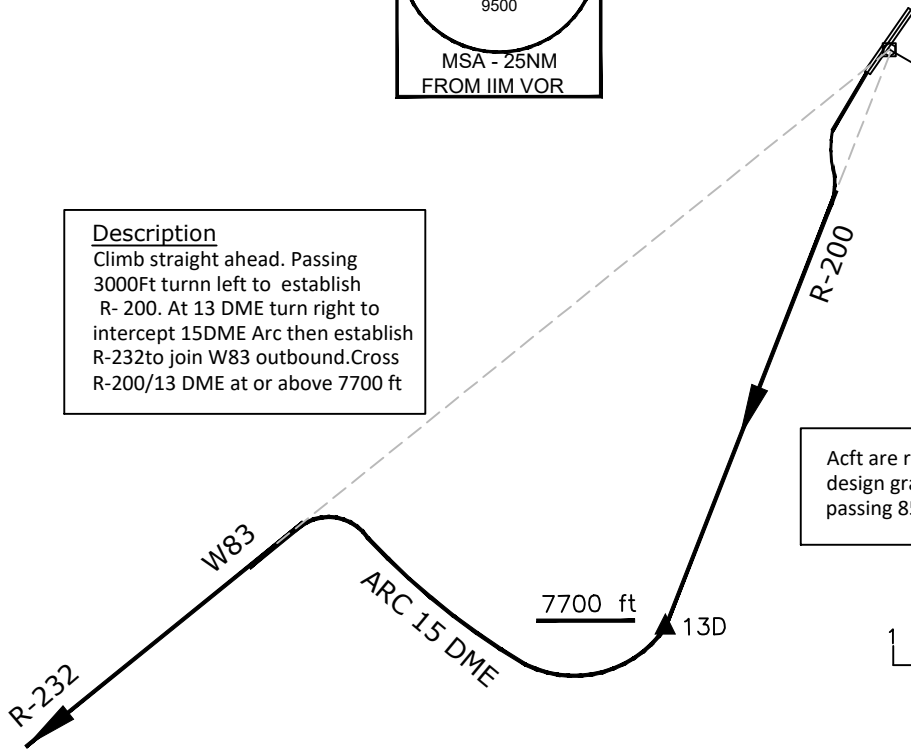


Transition Altitude
11000 ft

VOR/DME 115.9
IIM $\frac{115.9}{\text{---}}$
24° 45' 29.86"N
093° 53' 51.79"E

Description
Climb straight ahead. Passing 3000ft turn left to establish R-200. At 13 DME turn right to intercept 15DME Arc then establish R-232 to join W83 outbound. Cross R-200/13 DME at or above 7700 ft

Acft are required to maintain procedure design gradient 7% (425ft/NM) min. until passing 8500 ft



DRG. NO. AAI/12 -SID/11/31-12-2020
AIRPORTS AUTHORITY OF INDIA