

AIRCRAFT PARKING /
DOCKING CHART
NEW APRON

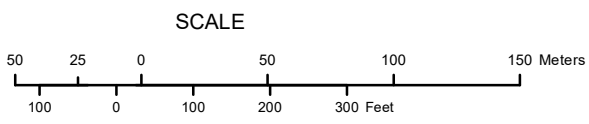
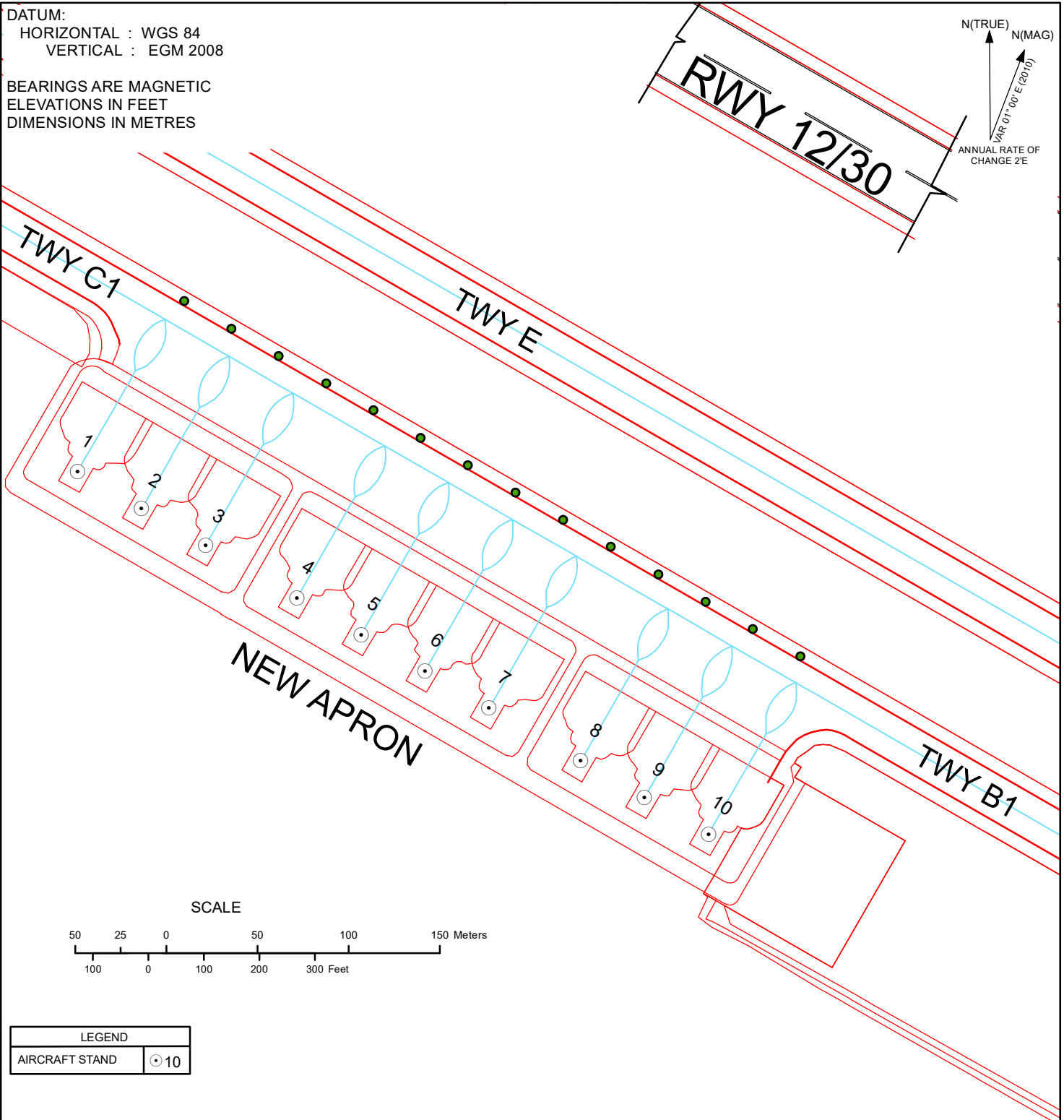
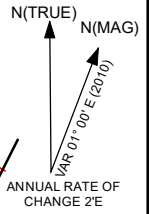
APRON ELEV. 701 ft.

TWR 118.3

HISAR, INDIA
HISAR AIRPORT

DATUM:
HORIZONTAL : WGS 84
VERTICAL : EGM 2008

BEARINGS ARE MAGNETIC
ELEVATIONS IN FEET
DIMENSIONS IN METRES



LEGEND	
AIRCRAFT STAND	⊙ 10

STAND NO.	CO-ORDINATES FOR AIRCRAFT STAND		ELEV. (ft.)	SUITABILITY	PCN	STATUS	CONTACT/ REMOTE
	LATITUDE	LONGITUDE					
1	29° 11' 17.91217" N	075° 43' 49.27197" E	701	A320	112/R/B/W/T	POWER-IN / PUSH-BACK	REMOTE
2	29° 11' 17.24657" N	075° 43' 50.56501" E	701	A320	112/R/B/W/T	POWER-IN / PUSH-BACK	REMOTE
3	29° 11' 16.58629" N	075° 43' 51.86199" E	701	A320	112/R/B/W/T	POWER-IN / PUSH-BACK	REMOTE
4	29° 11' 15.63439" N	075° 43' 53.71404" E	701	A320	112/R/B/W/T	POWER-IN / PUSH-BACK	REMOTE
5	29° 11' 14.97107" N	075° 43' 55.00846" E	701	A320	112/R/B/W/T	POWER-IN / PUSH-BACK	REMOTE
6	29° 11' 14.31001" N	075° 43' 56.30429" E	701	A320	112/R/B/W/T	POWER-IN / PUSH-BACK	REMOTE
7	29° 11' 13.64672" N	075° 43' 57.59884" E	701	A320	112/R/B/W/T	POWER-IN / PUSH-BACK	REMOTE
8	29° 11' 12.69610" N	075° 43' 59.45222" E	701	A320	112/R/B/W/T	POWER-IN / PUSH-BACK	REMOTE
9	29° 11' 12.03236" N	075° 44' 00.74726" E	701	A320	112/R/B/W/T	POWER-IN / PUSH-BACK	REMOTE
10	29° 11' 11.36840" N	075° 44' 02.04044" E	701	A320	112/R/B/W/T	POWER-IN / PUSH-BACK	REMOTE

TWY	PCN	WIDTH
C1	-	23M
B1	89/F/C/W/T	23M
E	-	23M