

**INSTRUMENT APPROACH CHART**

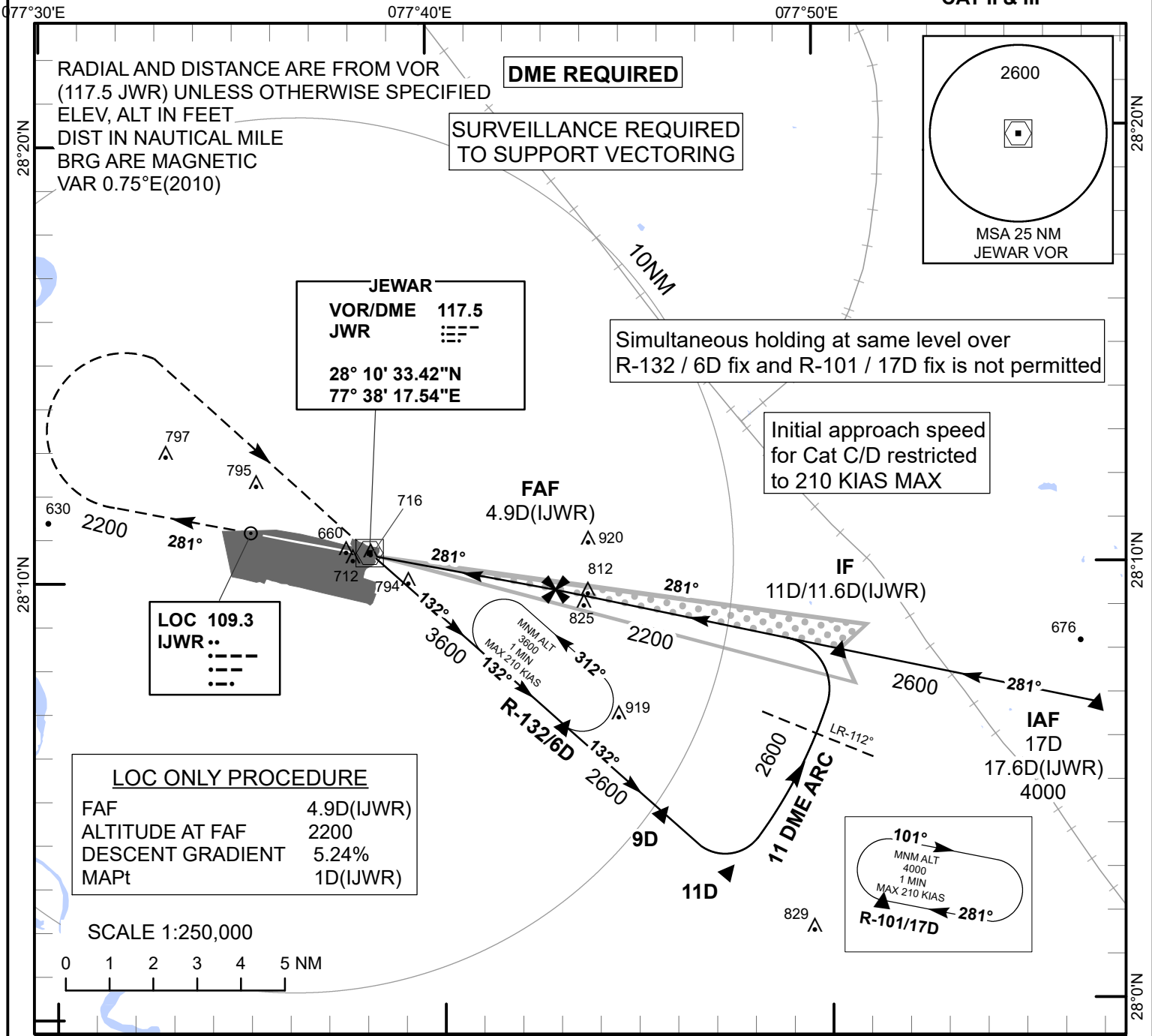
**AERODROME ELEV 653 ft**  
HEIGHTS RELATED TO THR RWY 28 - ELEV 650 ft

TWR 118.675/119.125  
APP 120.825/122.175

**NOIDA INTERNATIONAL (VIND)**

INDIA

**ILS or LOC Y RWY 28  
CAT II & III**



Transition Altitude 5000

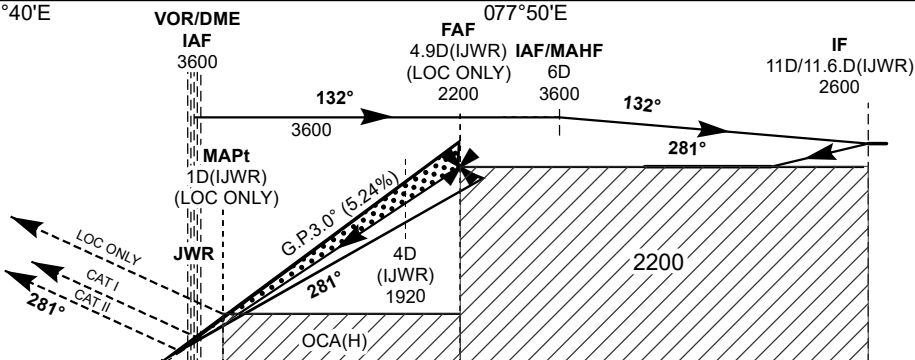
**MISSED APPROACH**

**Speed restricted to 185 KIAS MAX**

Climb straight ahead, passing 2200 ft climbing turn right proceed direct to JWR (VOR), establish R-132, to join R-132/6D Fix hold at 3600 ft or as instructed by ATC.

**ILS RDH 54.4**

THR ELEV 650



NAUTICAL MILES FROM THR RWY 28

OCA(H)		Distance/Altitude Information (LOC ONLY)							
A/cft Category	A/B/C/D	Distance (IJWR-DME)	NM	4.9(FAF)	4	3	2		
CAT I	850(200)	Altitude	Ft	2200	1920	1600	1280		
CAT II	750(100)	Rate of Descent/Ground Speed Information							
Radio altimeter reading at CAT II DH - 101 Ft	Ground Speed	Kt	80	100	120	140	160	180	
LOC ONLY	1060(407)	Rate of Descent (5.24%)	Ft/Min	425	530	635	745	850	955