

**AERODROME
CHART**

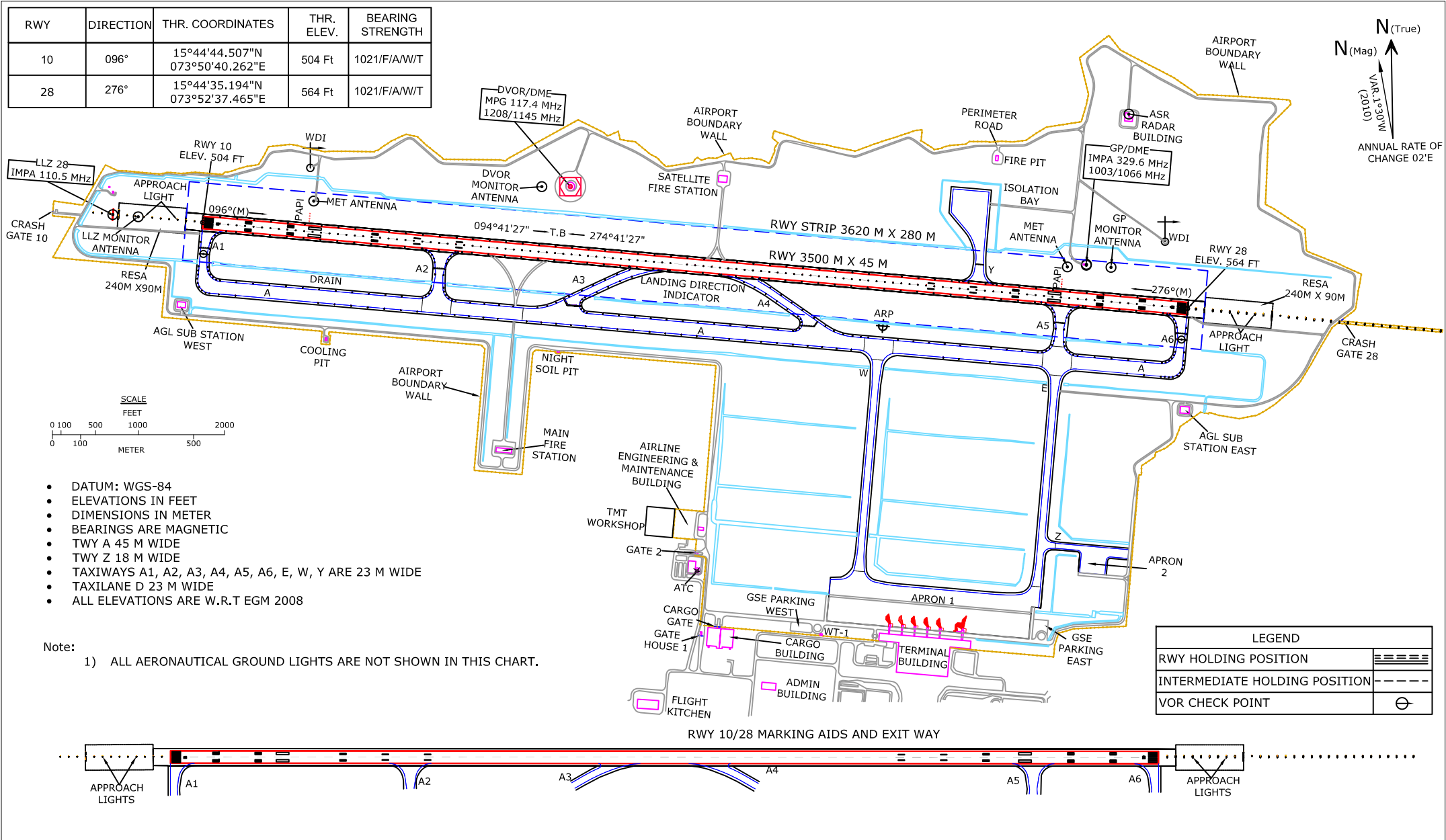
15°44'32.997"N
073°52'01.238"E

ELEV. 564 Ft

TWR. 119.4 MHz

GOA, INDIA
MANOHAR INTERNATIONAL
AIRPORT, MOPA

RWY	DIRECTION	THR. COORDINATES	THR. ELEV.	BEARING STRENGTH
10	096°	15°44'44.507"N 073°50'40.262"E	504 Ft	1021/F/A/W/T
28	276°	15°44'35.194"N 073°52'37.465"E	564 Ft	1021/F/A/W/T



- DATUM: WGS-84
- ELEVATIONS IN FEET
- DIMENSIONS IN METER
- BEARINGS ARE MAGNETIC
- TWY A 45 M WIDE
- TWY Z 18 M WIDE
- TAXIWAYS A1, A2, A3, A4, A5, A6, E, W, Y ARE 23 M WIDE
- TAXILANE D 23 M WIDE
- ALL ELEVATIONS ARE W.R.T EGM 2008

Note:
1) ALL AERONAUTICAL GROUND LIGHTS ARE NOT SHOWN IN THIS CHART.

DATE OF AERONAUTICAL INFORMATION JUL 2024.

GMR GOA INTERNATIONAL AIRPORT LTD.

Airports Authority of India

AMDT 02/2025