

**INSTRUMENT
APPROACH
CHART**

AERODROME ELEV. 344
Heights related to
THR RWY 25 ELEV. 317

APP 121.175
TWR 118.050

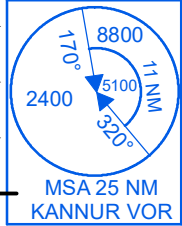
**KANNUR(VOKN)
INDIA
ILS RWY 25**

75°20'0"E

75°30'0"E

75°40'0"E

ALL RADIAL & DISTANCES ARE FROM
VOR(112.6) UNLESS OTHERWISE SPECIFIED.
ELEV. ALT IN FEET.
DIST. IN NAUTICAL MILE
BRG. IN MAGNETIC.
VAR 2°W(2010)



DME REQUIRED

LOC 108.9
IKAN

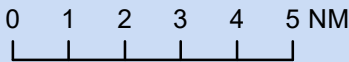
VOR 112.6
KNR
11° 54' 57.148"N
75° 32' 01.880"E

GP In-Operative procedure

FAF 6.6D(IKAN)
Altitude at FAF 2400ft
SDF 3D(IKAN)
Altitude at SDF 1270ft
Descent Gradient 5.24%(3°)
MAPt. 1D(IKAN)

1. Initial approach speed is restricted to 220Kt Max.
2. Circling is not permitted south of the aerodrome.

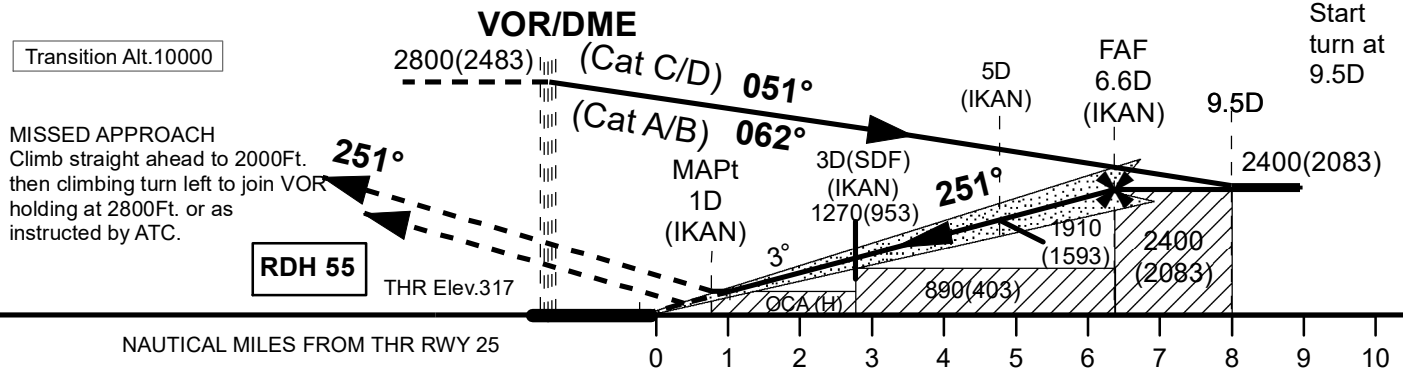
SCALE



75°20'0"E

75°30'0"E

75°40'0"E



Category of Acft.	A/B		C/D		Distance (NM)		6.6D	6D	5D	4D	3D(SDF)	2D
	517(200)		517(200)		Altitude (Ft)		2400	2220	1910	1590	1270	950
GP-in operative Procedure					Ground Speed/Rate of Descent Information							
Straight-in	with SDF	720(403)	720(403)	Ground Speed (Kt)		80	100	120	140	160	180	
	without SDF	890(573)	890(573)	Rate of Descent (Ft/NM)		425	530	635	745	850	955	
Visual Circling		1030(686)	1130(786)									