

INSTRUMENT
APPROACH
CHART

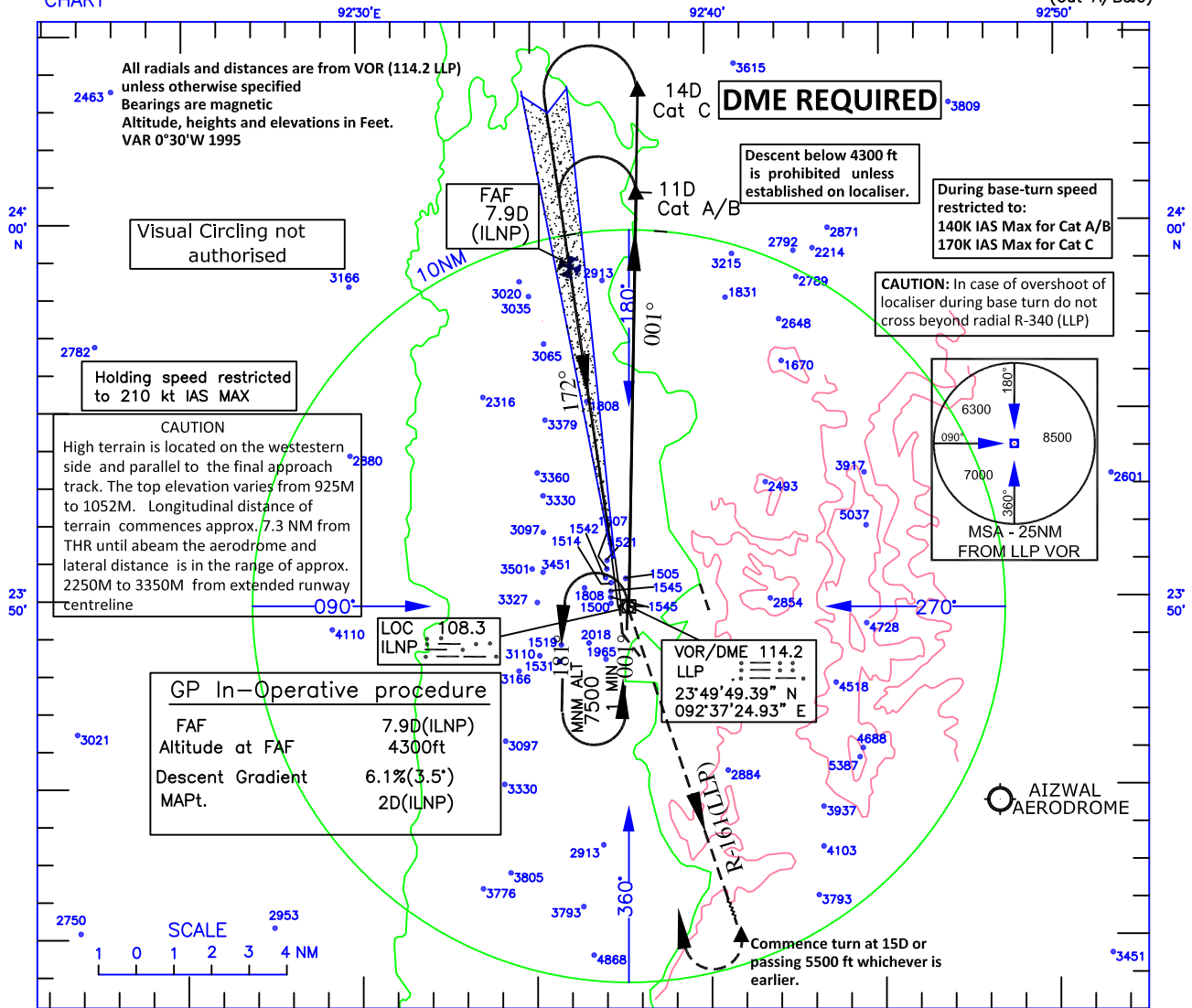
AERODROME ELEV 1398ft.

HEIGHTS RELATED TO
THR RWY 17—ELEV 1374ft

TWR 122.25
APP 122.25

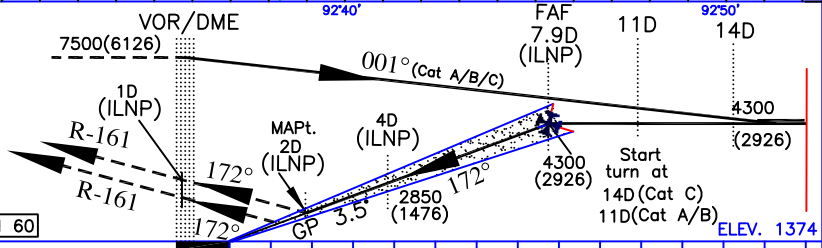
LENGPUI (VELP)

INDIA
ILS RWY 17
(Cat A/B&C)



Transition Altitude 9000

Missed Approach
(Missed Approach Speed restricted to 160K IAS Max until completion of turn)
Climb straight ahead, at 1D (ILS-DME) after THR, establish radia R-161 (LLP) climbing to 7500ft. Crossing 15D or passing 5500ft, whichever is earlier, turn right to join VOR holding or as advised by ATC.



OCA (H)			Distance (ILNP)/Altitude information (GP-INOP)							
Category of Act	A/B	C	Distance (NM)	7.9D	7D	6D	5D	4D	3D	2D
Straight-in	1660(286)	1670(296)	Altitude	4300	3960	3590	3220	2850	2480	2110
GP In-Operative			Ground Speed/Rate of Descent Information							
Straight-in	2220(822)	2220(822)	Ground Speed (Kt)	80	100	120	140	160		
			ROD (Ft/NM)	495	620	740	865	990		

- These procedures require a missed approach climb gradient of 4.0% (243 Ft/NM) until passing 5500ft.
- For aircraft which can achieve only 2.5% (152Ft/NM) missed approach climb gradient, OCA is 2100ft and 2110 ft for Cat A/B & Cat C respectively
- Localiser coverage restricted as:
Western side: 23° upto 10NM & 9.2° upto 18NM
Eastern side: No restriction.
- In case of failure of VOR/DME(LLP) during initial/missed approach commence turns w.r.t. ILS/DME (ILNP):
Base turn --- 9.8D & 12.8 D for Cat A/B & Cat C respectively.
Missed Approach -- 16 D.

DRG. NO. AAI/03-IALC/11/25-03-2022