

**AIRCRAFT PARKING/
DOCKING CHART**

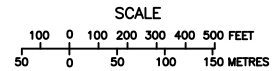
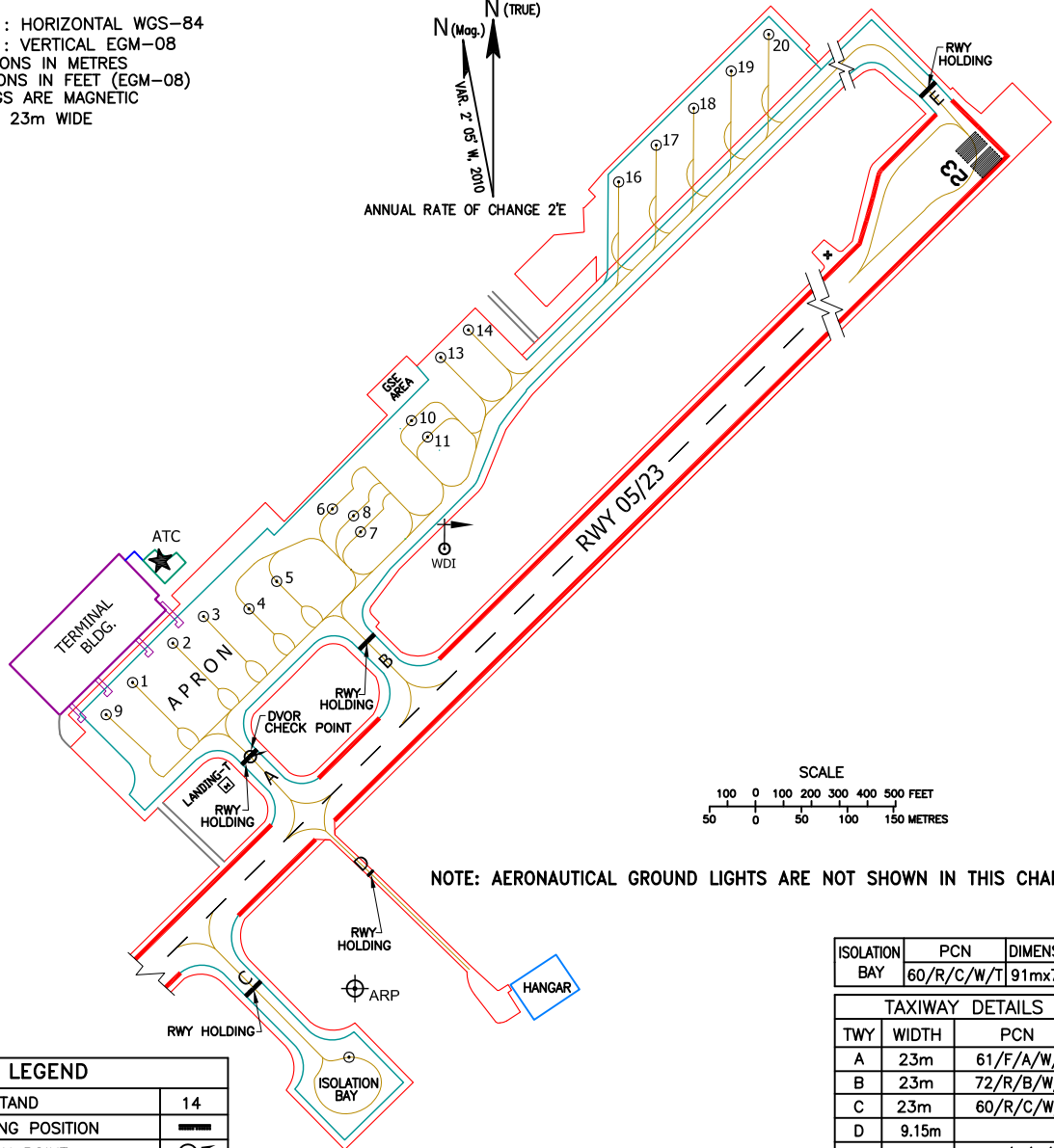
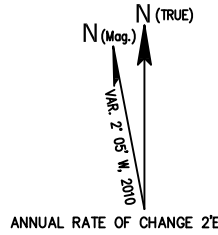
APRON ELEV 1309ft.

TWR 118.15

COIMBATORE, INDIA

COIMBATORE INTL. AIRPORT

- * DATUM : HORIZONTAL WGS-84
 : VERTICAL EGM-08
- * DIMENSIONS IN METRES
- * ELEVATIONS IN FEET (EGM-08)
- * BEARINGS ARE MAGNETIC
- * TAXIWAY 23m WIDE



NOTE: AERONAUTICAL GROUND LIGHTS ARE NOT SHOWN IN THIS CHART

LEGEND	
AIRCRAFT STAND	14
RWY-HOLDING POSITION	—
DVOR CHECK POINT	⊙

ISOLATION BAY	PCN	DIMENSION
	60/R/C/W/T	91mx76m

TAXIWAY DETAILS		
TWY	WIDTH	PCN
A	23m	61/F/A/W/T
B	23m	72/R/B/W/T
C	23m	60/R/C/W/T
D	9.15m	
E	23m	105/R/C/W/T

PARKING DETAIL

STAND NO.	LATITUDE	LONGITUDE	ELEV.(FT)	BEARING STRENGTH	SUITABILITY	STATUS OF AIRCRAFT STAND
1	11° 01' 47.7760" N	077° 02' 22.6027" E	1309	103/R/C/W/T	UPTO B739/A321	POWER IN - PUSH BACK
2	11° 01' 49.1633" N	077° 02' 24.0522" E	1308	103/R/C/W/T	UPTO B739/A321	POWER IN - PUSH BACK
3	11° 01' 50.0992" N	077° 02' 25.1606" E	1308	103/R/C/W/T	UPTO B739/A321	POWER IN - PUSH BACK
4	11° 01' 50.3558" N	077° 02' 26.7916" E	1308	72/R/B/W/T	UPTO B739/A321	POWER IN - POWER OUT
5	11° 01' 51.3237" N	077° 02' 27.7903" E	1307	72/R/B/W/T	UPTO B739/A321	POWER IN - POWER OUT
6	11° 01' 53.8756" N	077° 02' 29.8044" E	1305	98/R/C/W/T	UPTO B739/A321	POWER IN - POWER OUT
7	11° 01' 53.0572" N	077° 02' 30.8079" E	1304	98/R/C/W/T	UPTO AT72/E175	POWER IN - POWER OUT
8	11° 01' 53.6288" N	077° 02' 30.5603" E	1304	98/R/C/W/T	UPTO IL76/A313	POWER IN - POWER OUT
9	11° 01' 46.6444" N	077° 02' 21.6474" E	1309	103/R/C/W/T	UPTO B739/A321	POWER IN - PUSH BACK
10	11° 01' 56.9842" N	077° 02' 32.6605" E	1302	63/R/B/W/T	F2TH	POWER IN - POWER OUT
11	11° 01' 56.4036" N	077° 02' 33.2359" E	1301	63/R/B/W/T	F2TH	POWER IN - POWER OUT
13	11° 01' 59.2171" N	077° 02' 33.7220" E	1300	74/R/B/W/T	AT72	POWER IN - PUSH BACK
14	11° 02' 00.1844" N	077° 02' 34.7224" E	1299	74/R/B/W/T	AT72	POWER IN - PUSH BACK
16	11° 02' 05.4187" N	077° 02' 40.1002" E	1288	74/R/B/W/T	A321	POWER IN - PUSH BACK
17	11° 02' 06.7205" N	077° 02' 41.4507" E	1287	74/R/B/W/T	A321	POWER IN - PUSH BACK
18	11° 02' 08.0223" N	077° 02' 42.8011" E	1286	74/R/B/W/T	A321	POWER IN - PUSH BACK
19	11° 02' 09.3239" N	077° 02' 44.1513" E	1285	74/R/B/W/T	A321	POWER IN - PUSH BACK
20	11° 02' 10.6250" N	077° 02' 45.5025" E	1284	74/R/B/W/T	A321	POWER IN - PUSH BACK
ISOLATION BAY	11° 01' 34.4535" N	077° 02' 30.2653" E	1315			

DATE OF AERONAUTICAL INFORMATION
AUGUST, 2022

AIRPORTS AUTHORITY OF INDIA

DRG. NO. AAI-29 / PDC / 2022, (CARTO)
UPDATED AS ON 02.09.2022