

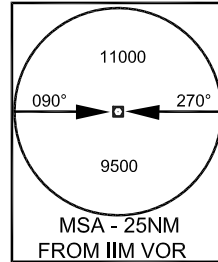
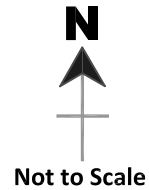
STANDARD DEPARTURE CHART
INSTRUMENT (SID)
CHART

AERODROME ELEV 2544ft
THR RWY 04 ELEV 2538ft

TWR 124.350

IMPHAL
INDIA
LIGSA 3B
RWY 22

ALL RADIALS AND DISTANCES ARE FROM VOR (115.9 IIM)
BEARING ARE MAGNETIC
ALTITUDE, ELEVATIONS AND HEIGHTS IN FEET
VAR 0.58°W 2010



Transition Altitude
11000 ft

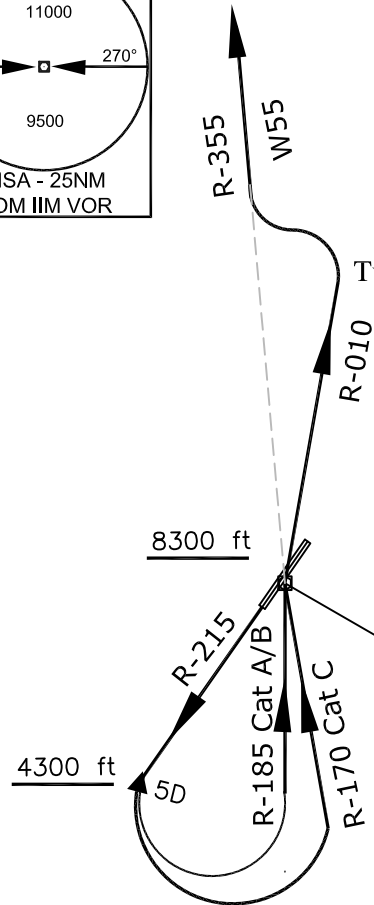
For Cat C Speed restricted to 204KT IAS MAX until interception of R-170

Description
Climb straight ahead. Passing 3000ft establish R- 215. At 5 DME turn left to establish R- 170 for Cat C and R-185 for Cat A/B to VOR. Then proceed via R-010 and passing 9000 ft turn left to establish R-355 to join W55 outbound. Cross R-215/05 DME at or above 4300 ft and VOR at or above 8300 ft

Turn left passing 9000 ft.

Acft are required to maintain procedure design gradient 7% (425ft/NM) min. until passing 8500 ft

Acft able to cross VOR at or above 9000 ft may proceed direct via R- 355



VOR/DME 115.9
IIM \therefore —
24° 45' 29.86"N
093° 53' 51.79"E

DRG. NO. AAI/13—SID/11/25—03—2022
AIRPORTS AUTHORITY OF INDIA