

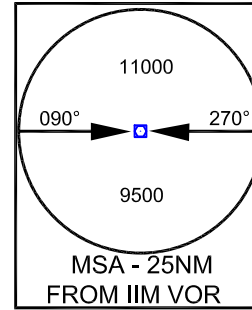
STANDARD DEPARTURE CHART
INSTRUMENT (SID)
CHART

AERODROME ELEV 2544ft
THR RWY 22 ELEV 2544ft

TWR 124.350

IMPHAL
INDIA
SILCHAR 3A
RWY 04

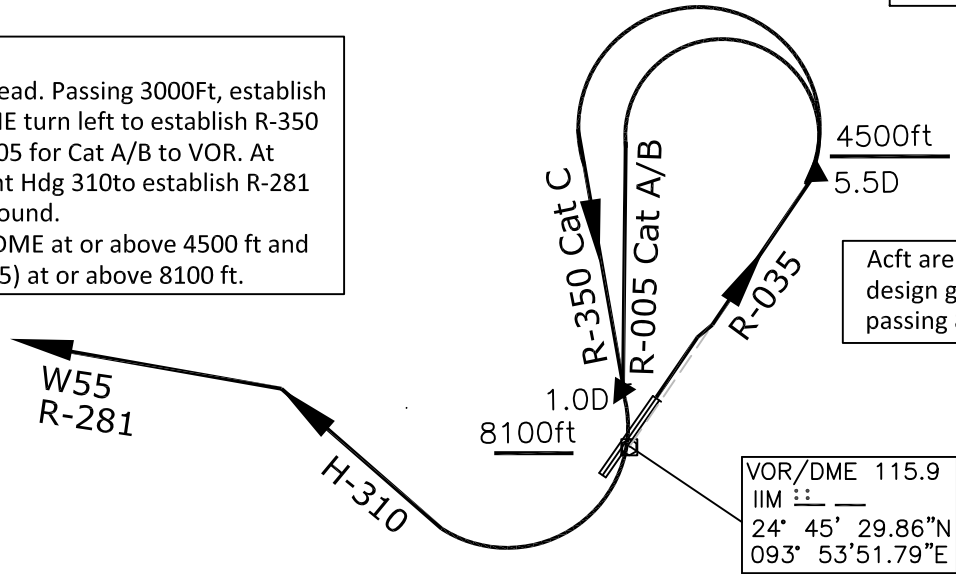
ALL RADIALS AND DISTANCES ARE FROM VOR (115.9 IIM)
BEARING ARE MAGNETIC
ALTITUDE, ELEVATIONS AND HEIGHTS IN FEET
VAR 0.58°W 2010



Transition Altitude
11000 ft

For Cat C Speed restricted
to 204KT IAS MAX until
interception of R-350

Description
Climb straight ahead. Passing 3000Ft, establish R- 035. At 5.5 DME turn left to establish R-350 for Cat C and R-005 for Cat A/B to VOR. At 1.0 DME turn right Hdg 310to establish R-281 to join W55 outbound.
Cross R-035/5.5 DME at or above 4500 ft and 1 DME (R-350/005) at or above 8100 ft.



Acft are required to maintain procedure design gradient 7% (425ft/NM) min. until passing 8500 ft

