

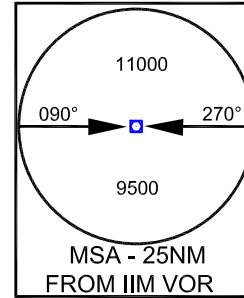
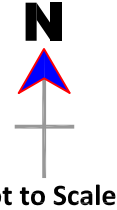
STANDARD DEPARTURE CHART  
INSTRUMENT (SID)  
CHART

AERODROME ELEV 2544ft  
THR RWY 04 ELEV 2538ft

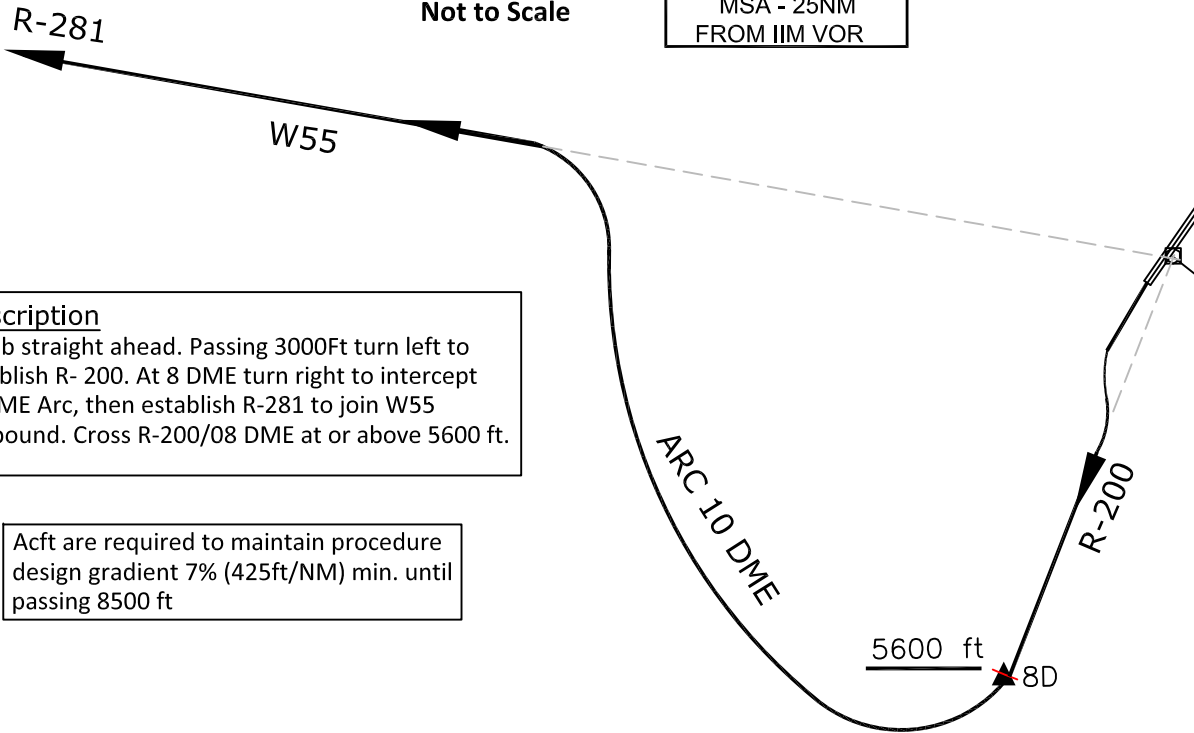
TWR 124.350

IMPHAL  
INDIA  
SILCHAR 3B  
RWY 22

ALL RADIALS AND DISTANCES ARE FROM VOR (115.9 IIM)  
BEARING ARE MAGNETIC  
ALTITUDE, ELEVATIONS AND HEIGHTS IN FEET  
VAR 0.58°W 2010



Transition Altitude  
11000 ft



VOR/DME 115.9  
IIM ::  
24° 45' 29.86"N  
093° 53' 51.79"E

**Description**  
Climb straight ahead. Passing 3000ft turn left to establish R- 200. At 8 DME turn right to intercept 10DME Arc, then establish R-281 to join W55 outbound. Cross R-200/08 DME at or above 5600 ft.

Acft are required to maintain procedure design gradient 7% (425ft/NM) min. until passing 8500 ft

DRG. NO. AAI/10-SID/11/25-03-2022  
AIRPORTS AUTHORITY OF INDIA