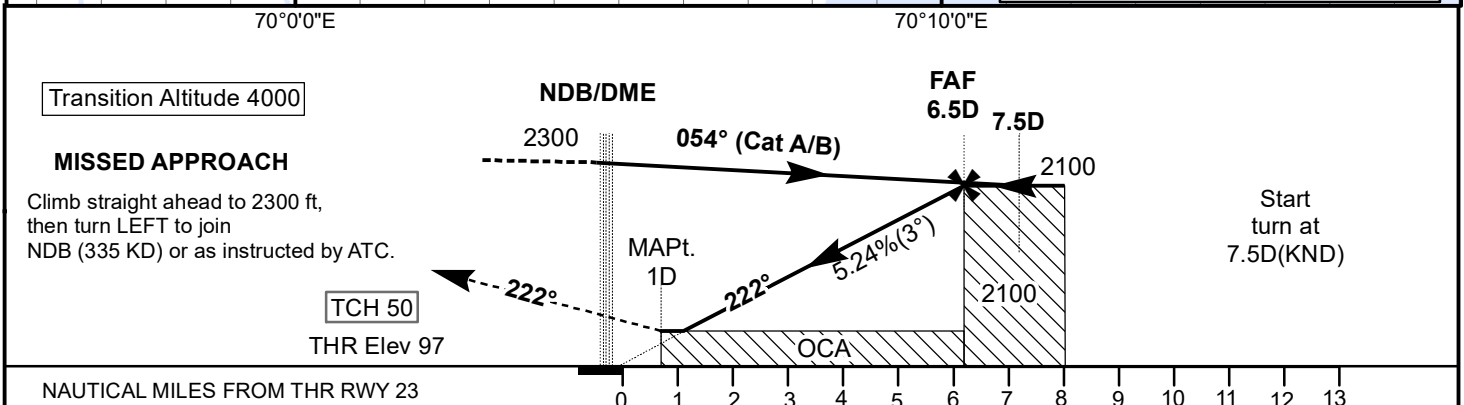
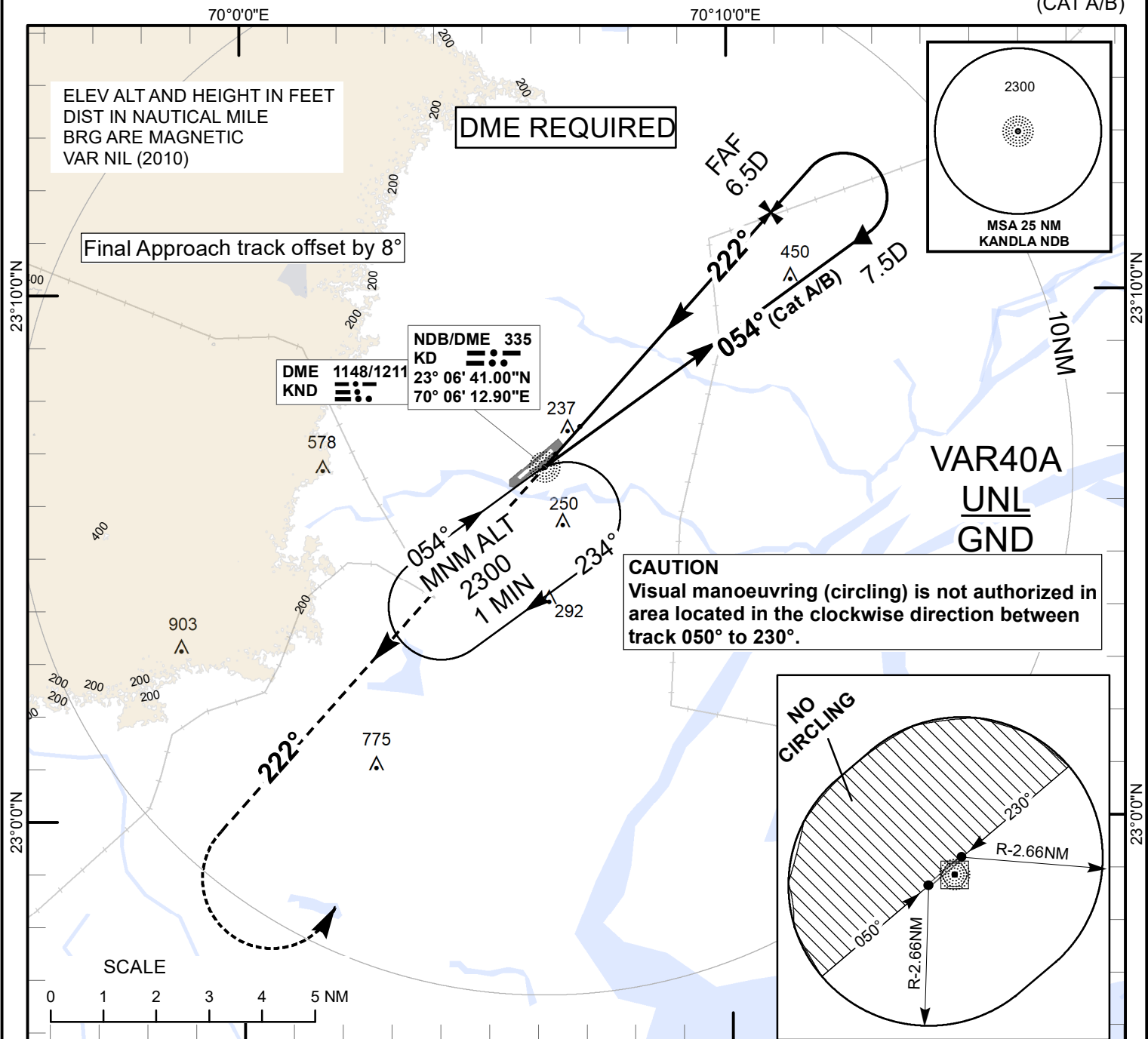


**INSTRUMENT  
APPROACH  
CHART**

**AERODROME ELEV 97 ft  
HEIGHT RELATED TO  
THR RWY 23 ELEV 97 ft**

**TWR 118.6**

**KANDLA (VAK) INDIA  
NDB RWY 23  
(CAT A/B)**



| OCA(H)          |          | Distance / Altitude Information           |           |            |      |      |      |      |
|-----------------|----------|---|-----------|------------|------|------|------|------|
| A/cft Category  | A/B      | Distance                                  | (NM)      | 6.5D (FAF) | 6D   | 5D   | 4D   | 3D   |
| STRAIGHT-IN     | 700(603) | Altitude                                  | (ft)      | 2100       | 1970 | 1650 | 1330 | 1010 |
| VISUAL CIRCLING | 700(603) | Rate of descent/ Ground speed information |           |            |      |      |      |      |
|                 |          | Ground Speed                              | (Kt)      | 80         | 100  | 120  | 140  |      |
|                 |          | Rate of Descent                           | (Ft/ MIN) | 425        | 535  | 640  | 745  |      |