

INSTRUMENT
APPROACH
CHART

AERODROME ELEV. 20ft.
HEIGHTS RELATED TO
THR RWY 19L-ELEV.18ft

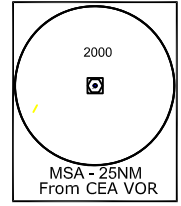
APP. 127.9/119.3
TWR.118.1

KOLKATA(VECC)
INDIA
ILS (Z) (Cat-I) RWY19L

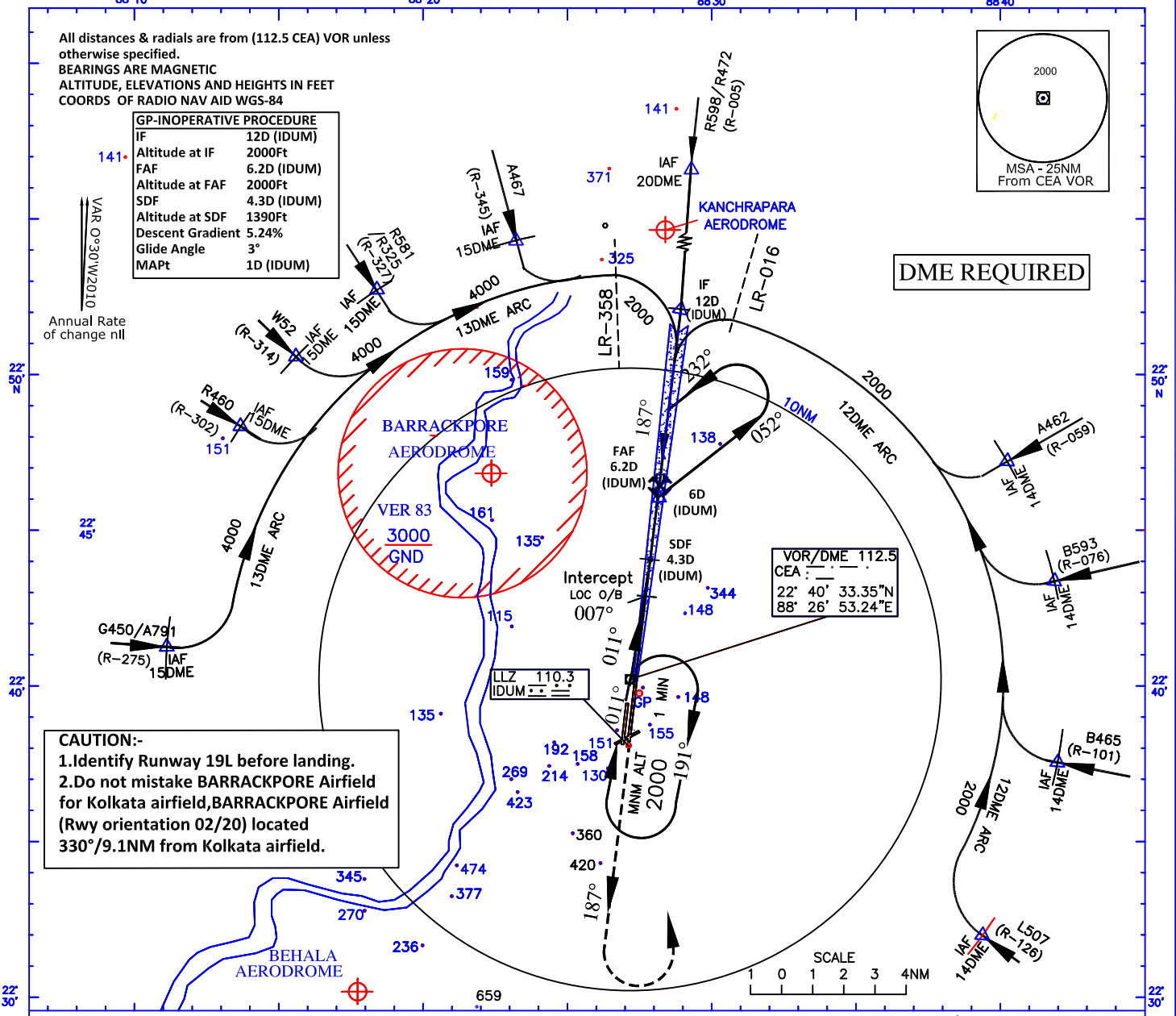
All distances & radials are from (112.5 CEA) VOR unless otherwise specified.
BEARINGS ARE MAGNETIC
ALTITUDE, ELEVATIONS AND HEIGHTS IN FEET
COORDS OF RADIO NAV AID WGS-84

GP-INOPERATIVE PROCEDURE	
IF	12D (IDUM)
Altitude at IF	2000Ft
FAF	6.2D (IDUM)
Altitude at FAF	2000Ft
SDF	4.3D (IDUM)
Altitude at SDF	1390Ft
Descent Gradient	5.24%
Glide Angle	3°
MAPt	1D (IDUM)

Annual Rate of change nil



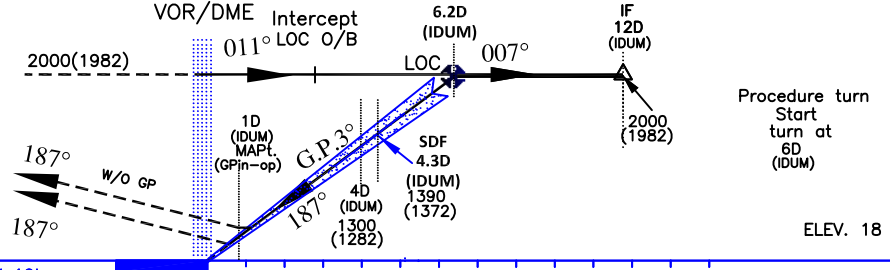
DME REQUIRED



CAUTION:-
1. Identify Runway 19L before landing.
2. Do not mistake BARRACKPORE Airfield for Kolkata airfield, BARRACKPORE Airfield (Rwy orientation 02/20) located 330°/9.1NM from Kolkata airfield.

Transition Altitude 4000

MISSED APPROACH
Climb straight ahead to 2000ft. then turn LEFT to join VOR (112.5CEA) holding or as instructed by ATC.



NAUTICAL MILES FROM THR RWY 19L

O C A (H)	Distance (IDUM)/Altitude information (GP-INOP)									
	A/B	C/D	Distance(NM)	6.2D	6D	5D	SDF 4.3D	4D	3D	2D
STRAIGHT-IN	247(229)	247(229)	Altitude (ft.)	2000	1930	1610	1390	1300	980	660
VISUAL CIRCLING	720(700)	820(800)	Ground Speed / Rate of Descent Information							
G.P-Inoperative procedure			Ground speed (kt.)	80	100	120	140	160	180	
STRAIGHT-IN	420(400)	420(400)	Rate of descent (ft/min)	425	530	635	745	850	955	
VISUAL CIRCLING	720(700)	820(800)								

DRG. NO. AAI/46-IALC/2019/25-03-2022

AIRPORTS AUTHORITY OF INDIA