

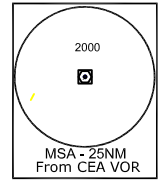
INSTRUMENT
APPROACH
CHART

AERODROME ELEV. 20ft.
HEIGHTS RELATED TO
THR RWY 19R-ELEV.17ft

APP.127.9/119.3
TWR.118.1

KOLKATA(VECC)
INDIA
ILS RWY 19R

COORDS OF RADIO NAV AID WGS-84
BEARING ARE MAGNETIC
ALTITUDE, ELEVATIONS
AND HEIGHTS IN FEET.
All distances & radials are from
(112.5 CEA) VOR.



VAR 0.30W/2010
Annual Rate of change nil

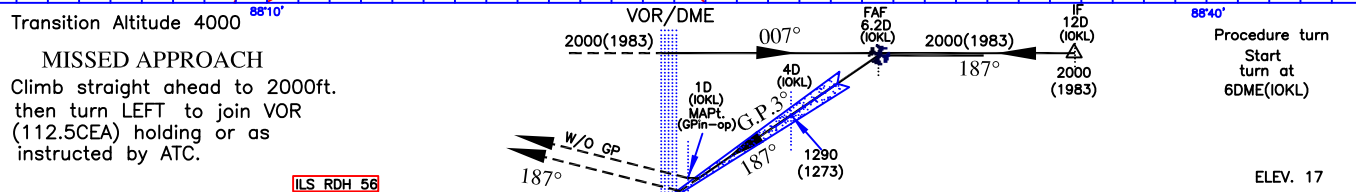
Speed restricted to 180kts

DME REQUIRED

GP In-Operative procedure
IF 12D(10KL)
Altitude over IF 2000 ft.
FAF 6.2D(10KL)
Altitude over FAF 2000 ft.
Descent Gradient 5.24%
Glide Angle 3°

NOTE: ATC may clear within aerodrome control zone an aircraft established on any radial other than the promulgated radial to join 12D/13D ARC Procedure at or above 2000ft. clear of BARRACKPORE airspace.

CAUTION:-
1. Identify Runway 19R before landing.
2. Do not mistake BARRACKPORE Airfield for Kolkata airfield, BARRACKPORE Airfield (Rwy orientation 02/20) located 330°/9.1NM from Kolkata airfield.



NAUTICAL MILES FROM THR RWY 19R

O C A(H)	Distance (10KL) /Altitude information					
	A/B	C/D	6.2D	6D	5D	4D
CATEGORY OF AIRCRAFT	253(236)	253(236)	2000	1930	1610	1290
STRAIGHT-IN	253(236)	253(236)	2000	1930	1610	1290
VISUAL CIRCLING	720(692)	820(797)				
G.P-Inoperative procedure			GROUND SPEED / RATE OF DESCENT INFORMATION			
STRAIGHT-IN	430(410)	430(410)	Ground speed (kt.)	80	100	120
VISUAL CIRCLING	720(700)	820(800)	Rate of descent (ft/min)	425	530	635
				140	160	180
				745	850	955

DRG. NO. AAI/6(a)-IALC/2010/25.03.2022