

INSTRUMENT  
APPROACH  
CHART

AERODROME ELEV. 20ft.  
HEIGHTS RELATED TO  
THR RWY 19L—ELEV.18ft

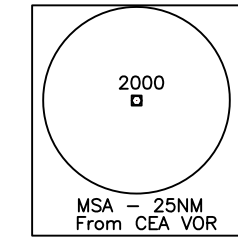
APP. 127.9/119.3  
TWR.118.1

KOLKATA(VECC)  
INDIA  
VOR RWY19L

COORDS OF RADIO NAV AID WGS-84  
BEARING ARE MAGNETIC  
ALTITUDE, ELEVATIONS  
AND HEIGHTS IN FEET.  
All distances & radials are from  
(112.5 CEA) VOR.

VAR 0.30°W2010  
Annual Rate  
of change nil

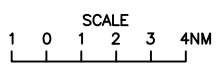
Speed restricted to 180kts



DME REQUIRED

NOTE: ATC may clear within aerodrome  
control zone an aircraft established  
on any radial other than the  
promulgated radial to join 12D/13D  
ARC Procedure at or above 2000ft.  
clear of BARRACKPORE airspace.

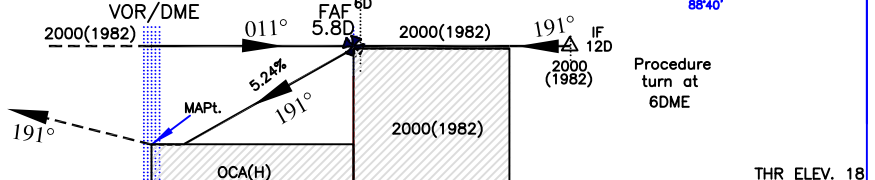
CAUTION:-  
1. Identify Runway 19L before landing.  
2. Do not mistake BARRACKPORE Airfield  
for Kolkata airfield, BARRACKPORE Airfield  
(Rwy orientation 02/20) located  
330°/9.1NM from Kolkata airfield.



BEHALA  
AERODROME

Transition Altitude 4000

MISSED APPROACH  
Climb straight ahead to 2000ft.  
then turn LEFT to join VOR  
(112.5CEA) holding or as  
instructed by ATC.



NAUTICAL MILES FROM THR RWY 19L

O. C. A. (H)			Distance (VORDME) /Altitude information						
CATEGORY OF AIRCRAFT	A/B	C/D	Distance(NM)	5.8D	5D	4D	3D	2D	1D
STRAIGHT-IN	440(420)	440(420)	Altitude (ft.)	2000	1760	1440	1120	800	480
VISUAL CIRCLING	720(700)	820(810)	GROUND SPEED / RATE OF DESCENT INFORMATION						
			Ground speed (kt.)	80	100	120	140	160	180
			Rate of descent (ft/min)	425	530	635	745	850	955

DRG. NO. AAI/8-IALC/2010/25-03-2022