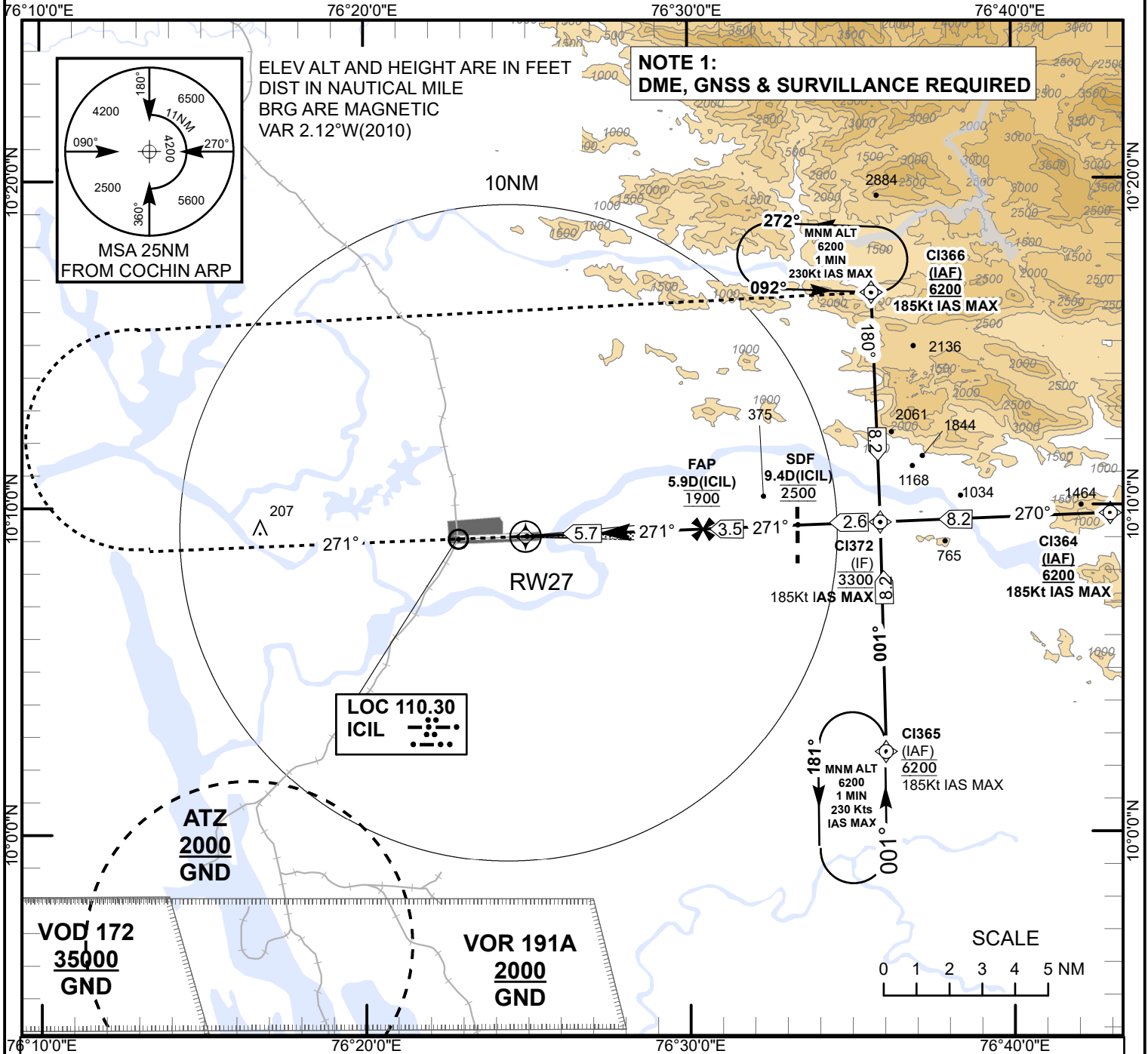


**INSTRUMENT
APPROACH
CHART**

**AERODROME ELEV 30ft
THR RWY 27 ELEV 30ft**

**TWR 118.80
APP 119.75**

**COCHIN INTL (VOCI)
INDIA
ILS W RWY 27**



Transition Alt 11000

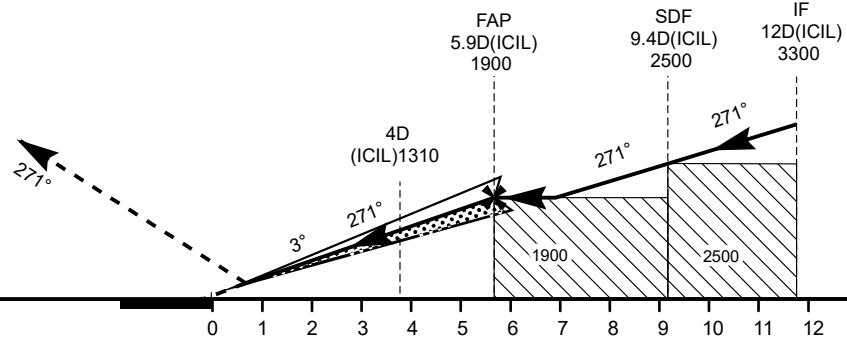
MISSED APPROACH

Climb straight ahead 2500ft, then climbing turn RIGHT to join CI366 holding at 6200ft or as instructed by ATC.

RDH 50

ELEV 30

NAUTICAL MILES FROM THR RWY 27



OCA(H)			
Acut Category		A/B	C/D
Straight-in	ILS	300(270)	320(290)