

**INSTRUMENT APPROACH CHART**

**AERODROME ELEV. 344**  
Heights related to  
**THR RWY 25 ELEV. 317**

**APP 121.175**  
**TWR 118.050**

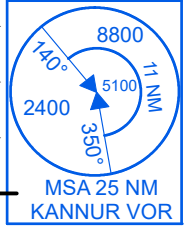
**KANNUR(VOKN) INDIA**  
**ILS RWY 25**

75°20'0"E

75°30'0"E

75°40'0"E

ALL RADIAL & DISTANCES ARE FROM VOR(112.6) UNLESS OTHERWISE SPECIFIED.  
ELEV. ALT IN FEET.  
DIST. IN NAUTICAL MILE  
BRG. IN MAGNETIC.  
VAR 2°W(2010)



**DME REQUIRED**

**LOC 108.9**  
**IKAN**

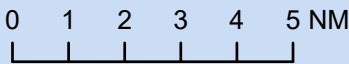
**VOR 112.6**  
**KNR**  
11° 54' 57.148"N  
75° 32' 01.880"E

**GP In-Operative procedure**

FAF 6.6D(IKAN)  
Altitude at FAF 2400ft  
SDF 3D(IKAN)  
Altitude at SDF 1270ft  
Descent Gradient 5.24%(3°)  
MAPt. 1D(IKAN)

1. Initial approach speed is restricted to 220Kt Max.
2. Circling is not permitted south of the aerodrome.

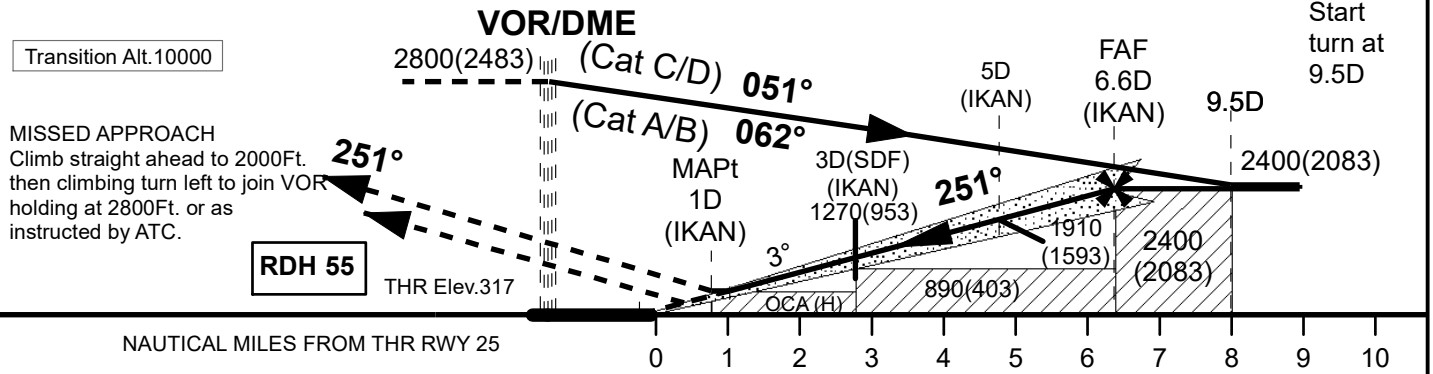
**SCALE**



75°20'0"E

75°30'0"E

75°40'0"E



Category of Acft.	A/B	C/D	Distance (NM)	6.6D	6D	5D	4D	3D(SDF)	2D	
Straight-in	517(200)	517(200)	Altitude (Ft)	2400	2220	1910	1590	1270	950	
GP-in operative Procedure			Ground Speed/Rate of Descent Information							
Straight-in	with SDF	720(403)	720(403)	Ground Speed (Kt)	80	100	120	140	160	180
	without SDF	890(573)	890(573)	Rate of Descent (Ft/NM)	425	530	635	745	850	955
Visual Circling	1030(686)	1130(786)								