

**INSTRUMENT  
APPROACH  
CHART**

**AERODROME ELEV. 344**  
Heights related to  
**THR RWY 07 ELEV. 344**

**APP 121.175**  
**TWR 118.05**

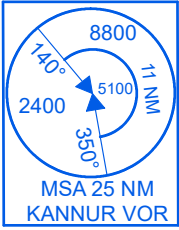
**KANNUR(VOKN)  
INDIA  
VOR RWY 07**

75°20'0"E

75°30'0"E

75°40'0"E

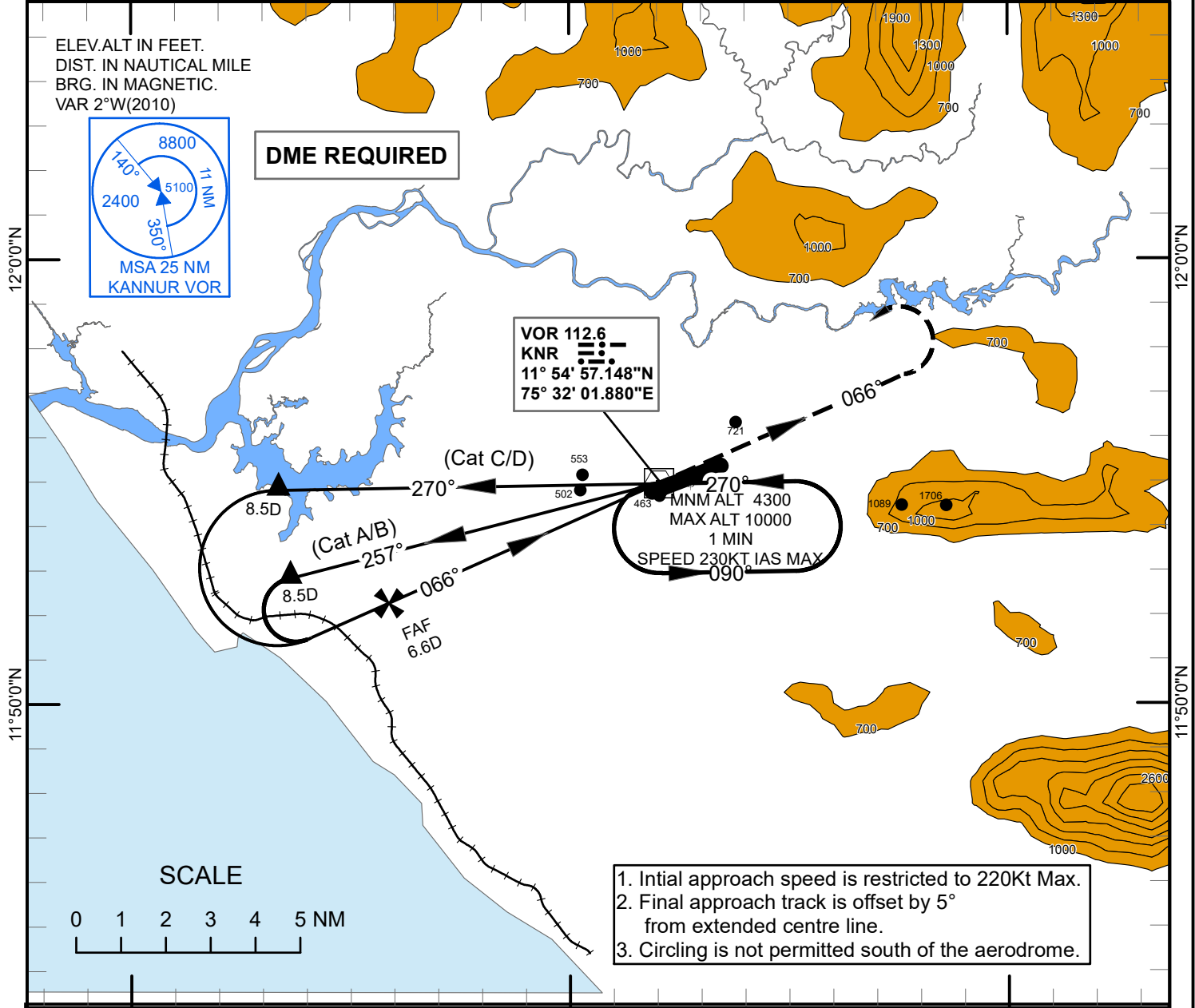
ELEV. ALT IN FEET.  
DIST. IN NAUTICAL MILE  
BRG. IN MAGNETIC.  
VAR 2°W(2010)



**DME REQUIRED**

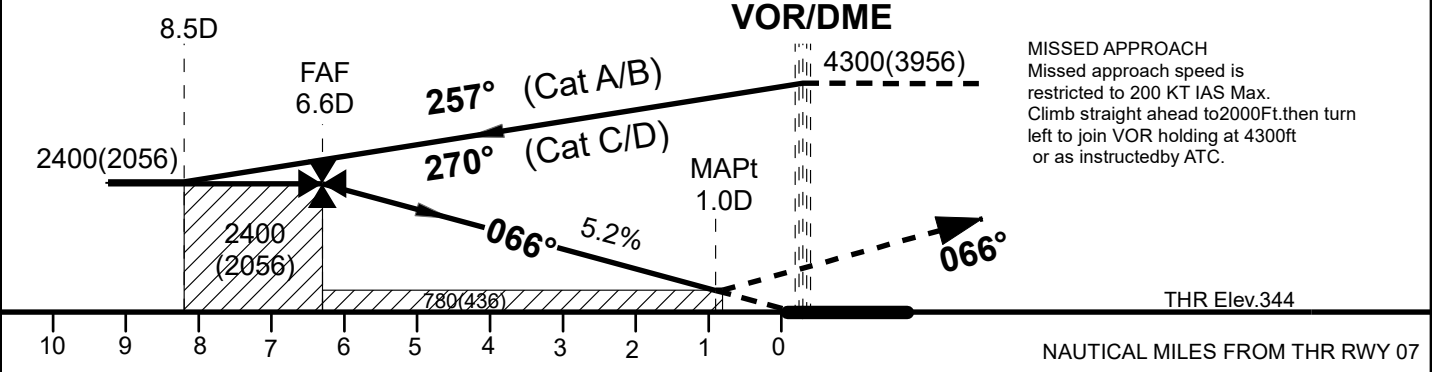
**VOR 112.6**  
**KNR**  
11° 54' 57.148"N  
75° 32' 01.880"E

**MINM ALT 4300**  
**MAX ALT 10000**  
**1 MIN**  
**SPEED 230KT IAS MAX**  
**090°**



1. Initial approach speed is restricted to 220Kt Max.
2. Final approach track is offset by 5° from extended centre line.
3. Circling is not permitted south of the aerodrome.

Transition Alt. 10000



**MISSED APPROACH**  
Missed approach speed is restricted to 200 KT IAS Max. Climb straight ahead to 2000Ft. then turn left to join VOR holding at 4300ft or as instructed by ATC.

OCA(H)			Distance (VOR-DME)/Altitude Information						
Category of Acft.	A/B	C/D	Distance (NM)	6.6D	6D	5D	4D	3D	2D
Straight-in	780(436)	780(436)	Altitude (Ft)	2400	2220	1910	1590	1280	960
Visual Circling	1030(686)	1130(786)	Ground Speed/Rate of Descent Information						
			Ground Speed (Kt)	80	100	120	140	160	180
			Rate of Descent (Ft/NM)	425	530	635	740	845	950