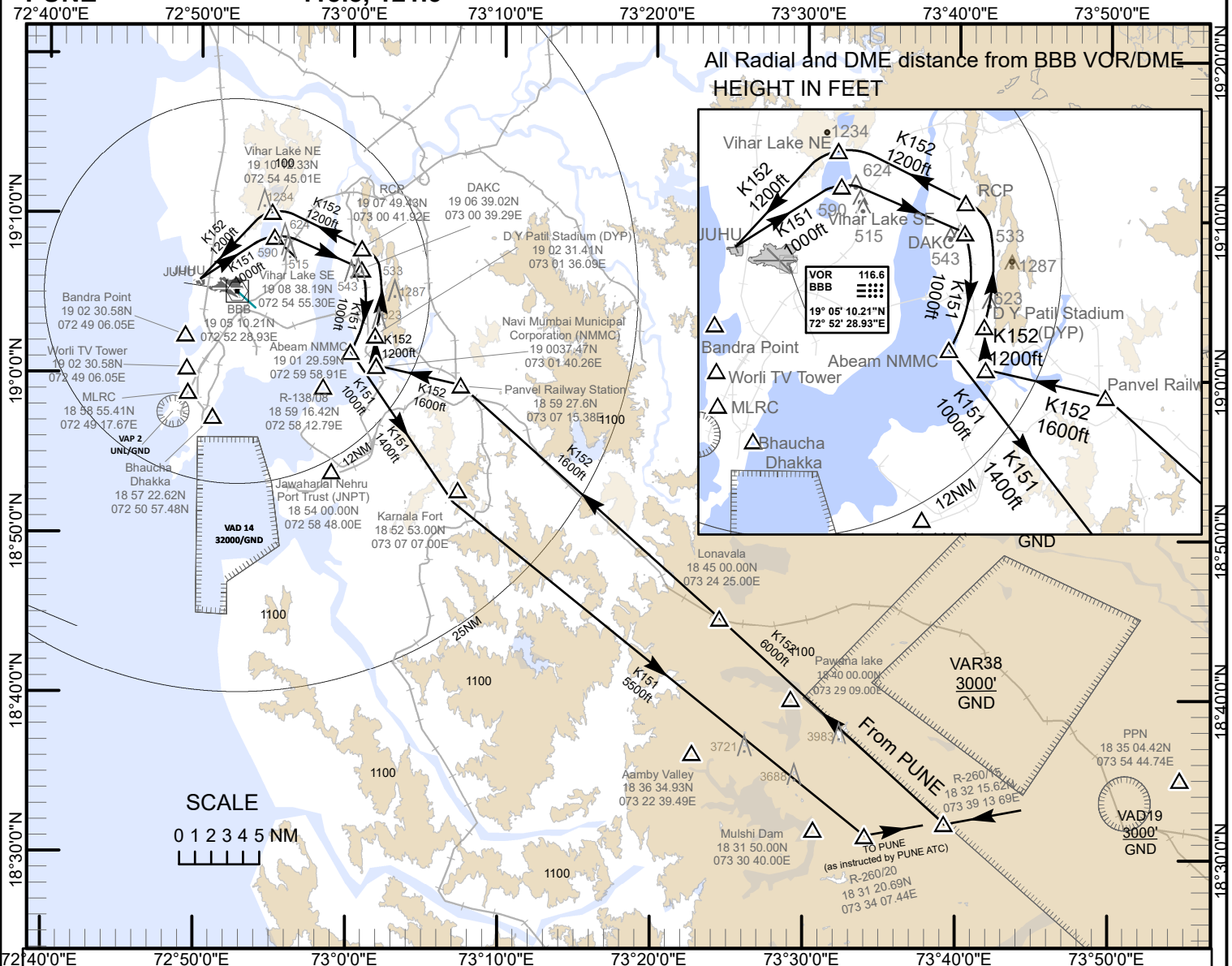


JUHU TWR 118.750, 124.350
MUMBAI TWR 118.100
 APP 127.900
INS Kunjali-SPARTAN 126.8
PUNE 118.8, 121.3

MUMBAI (VABB)
 INDIA
HELICOPTER VFR ROUTES
 (Runway in use 27 at Mumbai) **K151, K152**



K151 (Runway in use 27 at Mumbai) (Juhu / DAKC / RCP to Pune):

Depart from RWY26 Juhu and proceed via Vihar Lake Southern Edge to DAKC helipad, thereafter, join 8D arc BBB. Passing abeam Navi Mumbai Municipal Corporation (NMMC to the left) proceed via South of Karnala Fort to R-260/20NM PPN thereafter as instructed by Pune ATC.

Within 12NM from BBB Maintain 1000 ft AMSL (on Mumbai QNH). Between 12NM to 25NM from BBB Maintain 1400 ft AMSL (on Mumbai QNH). Beyond 25NM from BBB Maintain 5500 ft AMSL (on 1013.2 hpa)

K152 (Runway in use 27 at Mumbai) (Pune to Juhu / DAKC / RCP):

From R-260/15NM PPN proceed via Lonavala to Panvel Railway Station, route via NMMC to D Y Patil Stadium. Join 9D arc BBB and proceed to Juhu Aerodrome via RCP helipad and Vihar Lake Northern Edge

Beyond 25NM from BBB Maintain 6000 ft AMSL (on 1013.2 hpa) and descend to be at 1600 ft by 25NM from BBB and maintain until 12 NM. Within 12NM from BBB Maintain 1200 ft AMSL (on Mumbai QNH).

S.No.	Visual Reporting Points / Landmarks	BBB VOR Radial and Distance	S.No.	Visual Reporting Points / Landmarks	BBB VOR Radial and Distance
1.	Aamby Valley	R-136/39.9NM	8.	Lonavala	R-124/36.3NM
2.	Abeam NMMC	R-117.2NM	9.	Mulshi Dam	R-133/49NM
3.	Bhaucha Dhakka	R-117.9NM	10.	Navi Mumbai Municipal Corporation (NMMC)	R-118/9.8NM
4.	Dhirubhai Ambani Knowledge Center (DAKC) Helipad	R-079/7.9NM	11.	Panvel Railway Station	R-112/15NM
5.	D Y Patil Stadium (DYP)	R-107/9NM	12.	Pawna Lake	R-126/43NM
6.	Jawaharlal Nehru Port Trust (JNPT)	R-152/12.6NM	13.	Reliance Corporate Park (RCP) Helipad	R-071/8.2NM
7.	Karnala Fort	R-132/18.5NM	14.	Vihar Lake Southern Edge	R-023/3.8NM
			15.	Vihar Lake Northern Edge	R-016/5.2NM

DRG.NO. AAI/22-IALC/19/01/10/2021