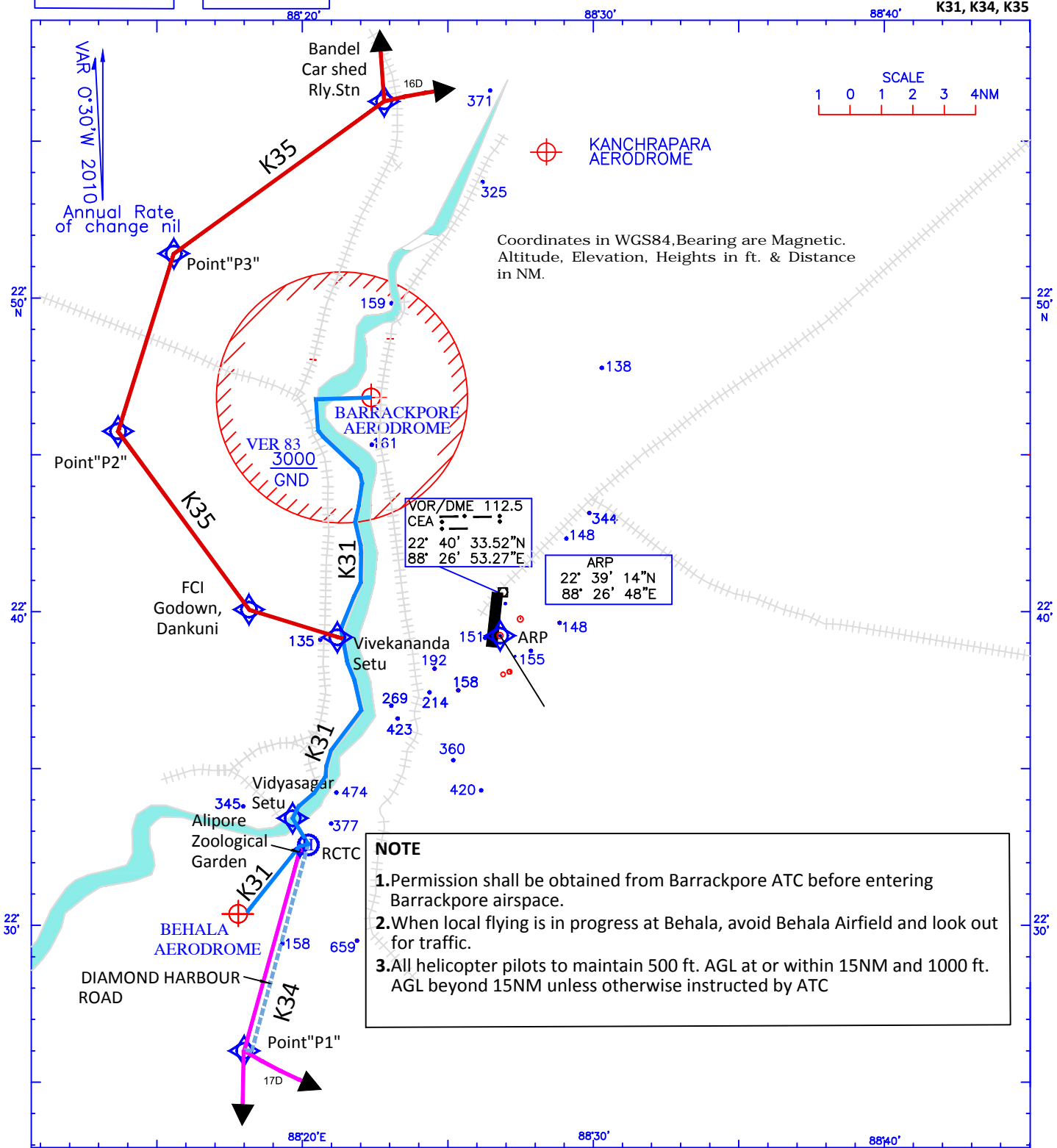


KOKATA
APP 127.9MHz
TWR 118.1MHz

BARRACKPORE
TWR 122.7MHz

AERODROME ELEVATION—23FEET

KOLKATA(VECC)
INDIA
HELICOPTER VFR ROUTING
K31, K34, K35



- K31:** Behala- RCTC-Vidyasagar Setu-along west bank of Hooghly River until abeam Barrackpore airfield. Cross the river to join Barrackpore Traffic circuit. Follow the reciprocal route on return.
- K34:** RCTC- Alipore Zoological Gardens- along Diamond Harbour Road upto Point 'P1' (222600N 0881800E), 211R/17D. Then proceed to destination towards South East or East of Kolkata by ensuring at least 17 NM distance from CEA or flying 17 DME arc CEA VOR. Follow the reciprocal route on return.
- K35:** Vivekananda Setu -FCI Godown, Dankuni- point 'P2' (224545N 0881340E), 294R/13D- point 'P3' (225125N 0881535E), 317R/15D - Bandel Car shed Railway Station (225616N 0882250E). Then proceed to destination towards North East of Kolkata by ensuring at least 16 NM distance from CEA VOR or flying 16 DME arc CEA VOR. Follow the reciprocal route on return.

DRG. NO. AAI/3-IALC/16/09.06.16