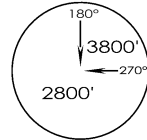


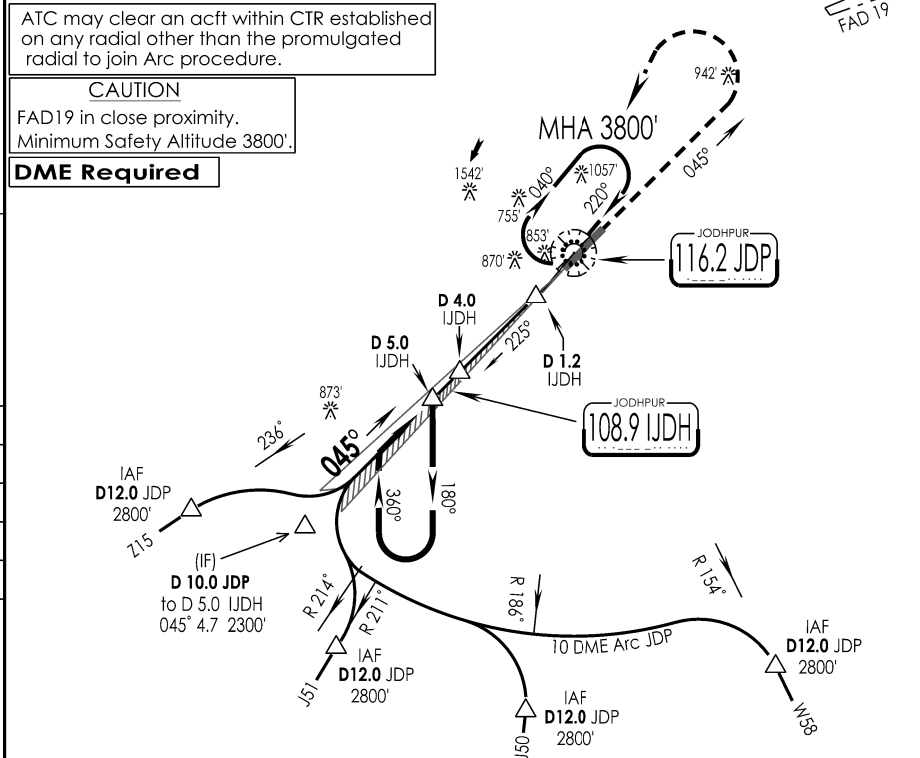
1-1

VIJO JODHPUR IAF JODHPUR, INDIA CAT I ILS RWY 05  
07 SEP 22 Eff 13 JUL 24

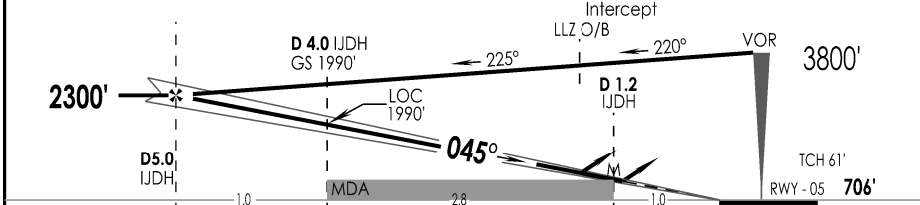
JODHPUR Tower 122.4, VC			JODHPUR Approach 121.8, UC		ATIS 116.2
VOR JDP <b>116.2</b>	LOC IJDH <b>108.9</b>	FINAL Apch Crs <b>045°</b>	GS <b>D 4.0 IJDH</b> <b>1990'</b>	DA (H) As Per Table	Apt Elev 712' RWY 706'
<b>MISSED APCH:</b> Climb straight ahead to 1500', then climbing turn LEFT to join VOR hold at 3800' or as directed by ATC.					
Alt Set: hPa			Rwy Elev: 25 hPa	Trans level: By ATC	Trans alt: 4000'



1 Inch = 5.0 NM  
5.0 NM  
0  
5.0 NM



LOC GS OUT	IJDH DME ALTITUDE (ft)	5.0	4.0	3.0	2.0	
		2300	1990	1670	1350	



GND SPEED KTS	80	100	120	140	160	180
ILS GS or LOC DESCENT ANGLE 3.0°	425	531	637	743	849	955

CAT-II PAPI-R	↑ 1500'	3800' LT
---------------	---------	----------

STRAIGHT-IN LANDING RWY 05				CIRCLE - TO - LAND				
ILS		LOC (GS OUT) CDFA						
DA (H) <b>916'</b> (210')		MDA (H) <b>1100'</b> (394')						
IALS	ALS OUT	IALS	ALS OUT	Max Kts	MDA (H)	VIS		
A			RVR 1500m	100	<b>1480'</b> (768')	3800m		
B	RVR 750m	RVR 1200m	RVR 1800m	135				
C				180			<b>1940'</b> (1228')	5000m
D				205				

CHANGES : NEW PROCEDURE IPDC, DTE OF OPS (T & H)

SURVEY PERIOD : 2021 - 22