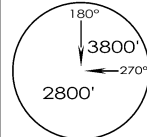


2-3

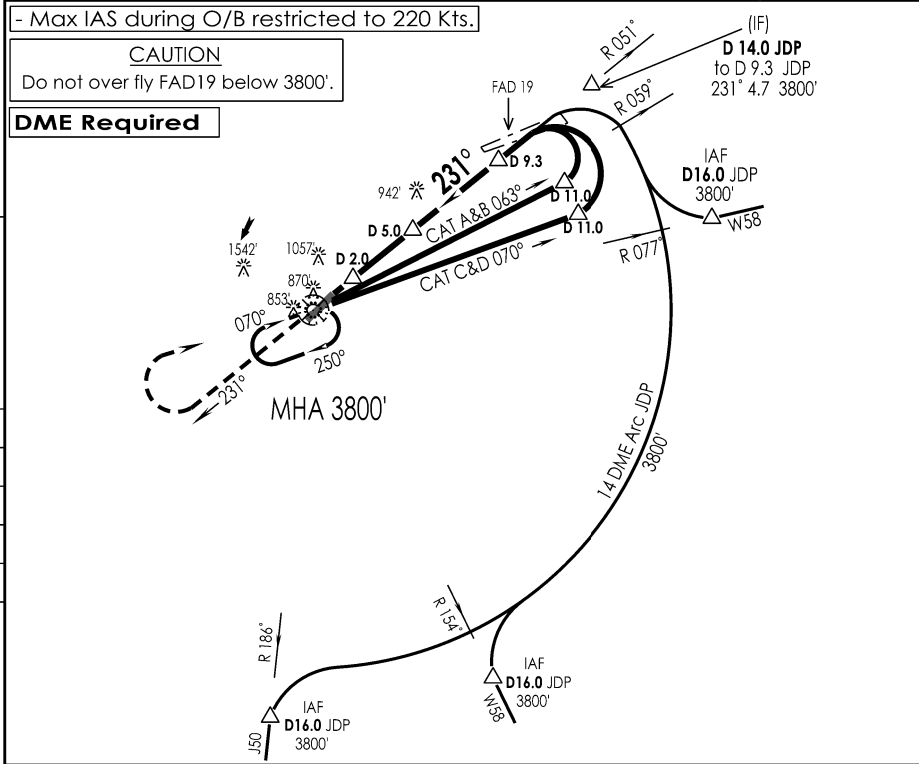
VIJO JODHPUR IAF JODHPUR, INDIA VOR RWY 23  
07 SEP 22 Eff 13 JUL 24

JODHPUR Tower 122.4, VC		JODHPUR Approach 121.8, UC		ATIS 116.2
VOR JDP 116.2	FINAL Apch Crs 231°	FAF D 9.3 JDP 3800'	MDA (H) 1120' (420')	Apt Elev 712' RWY 700'
<b>MISSED APCH:</b> Climb straight ahead to 1500', then climbing turn RIGHT to join VOR hold at 3800' or as directed by ATC.				
Alt Set: hPa		Rwy Elev: 25 hPa	Trans level: By ATC	Trans alt: 4000'

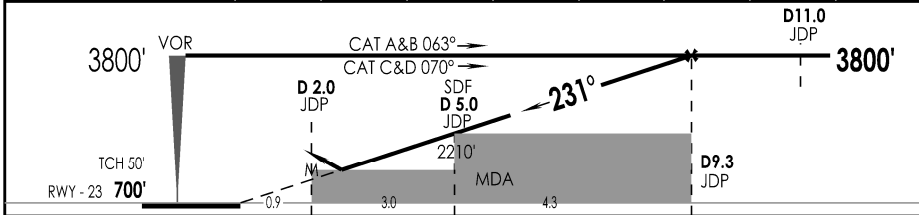


1 Inch = 7.5 NM  
7.5 NM  
0  
7.5 NM

SURVEY PERIOD : 2021 - 22



JDP DME	3.0	4.0	5.0	6.0	7.0	8.0	9.0	9.3	
ALTITUDE (ft)	1470	1840	2210	2580	2950	3320	3690	3800	



GND SPEED KTS	80	100	120	140	160	180		
DESCENT ANGLE 3.5°	494	617	740	864	987	1110		

STRAIGHT-IN LANDING RWY 23			CIRCLE - TO - LAND			
CDFA MDA(H) <b>1120' (420')</b>						
BALS		ALS OUT		Max Kts	MDA (H)	VIS
A	RVR 1500m			100	<b>1480'</b> (768')	3800m
B				135		
C	RVR 1700m			180	<b>1940'</b> (1228')	5000m
D		RVR 1900m		205		

CHANGES : NEW PROCEDURE

IPDC, DTE OF OPS (T & H)