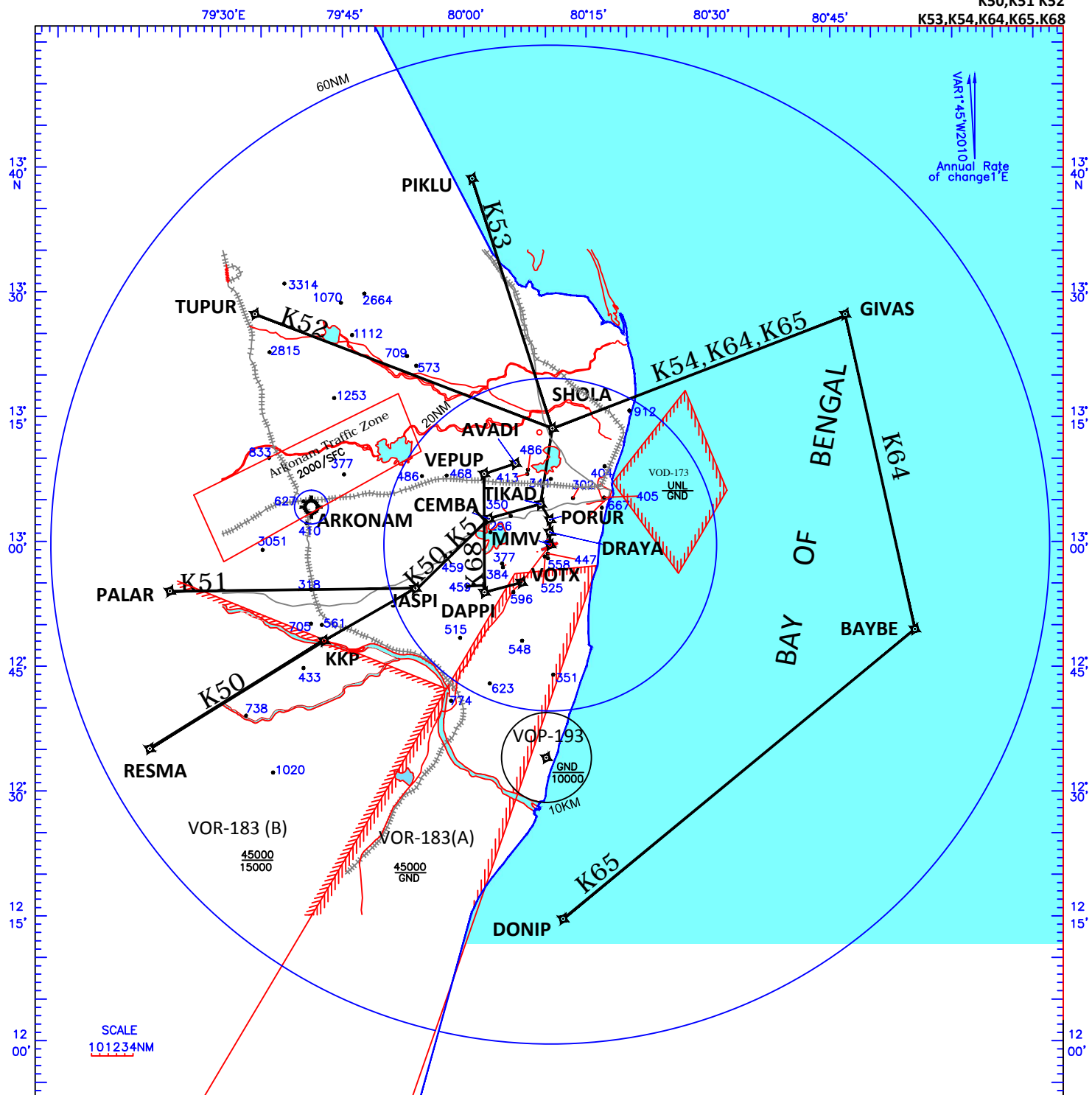


APP 127.9  
TWR 118.1

AERODROME ELEV. 52ft.

CHENNAI INDIA  
HELICOPTER VFR ROUTING  
RWY07/25 VOD173 active  
K50,K51 K52  
K53,K54,K64,K65,K68



Designator	Route	Remarks
K50	RESMA - KKP - JASPI - CEMBA - TIKAD - PORUR-DRAYA	
K51	PALAR - JASPI - CEMBA - TIKAD - PORUR-DRAYA	
K52	TUPUR - SHOLA - TIKAD - PORUR-DRAYA	
K53	PIKLU - SHOLA - TIKAD -PORUR-DRAYA	
K54	GIVAS - SHOLA - TIKAD -PORUR -DRAYA	Fly keeping Ennore Chimney (ETPS) to the South
K64	BAYBE - GIVAS - SHOLA - TIKAD - PORUR -DRAYA	Fly keeping Ennore Chimney (ETPS) to the South
K65	DONIP - BAYBE - GIVAS - SHOLA -TIKAD - PORUR-DRAYA	
K68	VOTX - DAPPI - VEPUP - AVADI	HC to operate at 500ft or as cleared by CHENNAI ATC