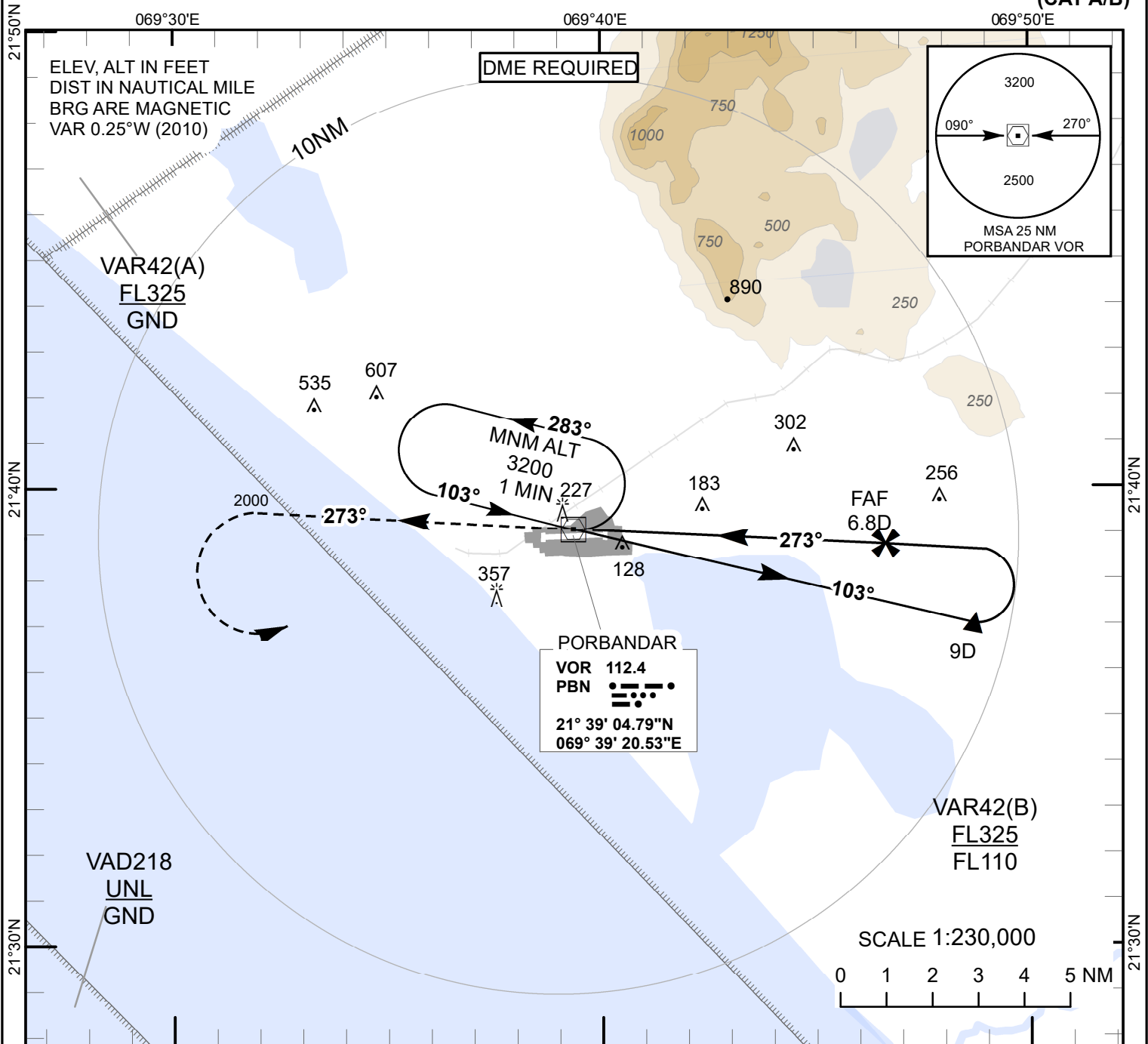


**INSTRUMENT
APPROACH
CHART**

AERODROME ELEV 26 ft
HEIGHT RELATED TO
THR RWY 27 ELEV 17 ft

TWR 118.850/118.700

PORBANDAR (VAPR)
INDIA
VOR RWY 27
(CAT A/B)

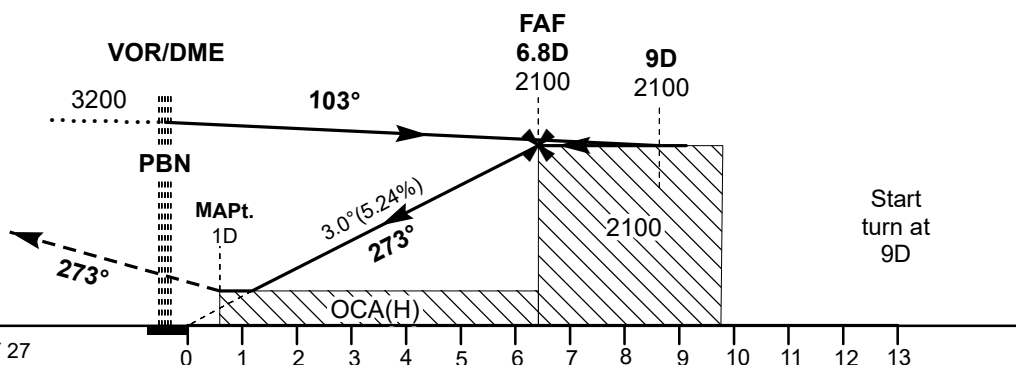


Transition Altitude 6000

MISSED APPROACH

Climb straight ahead to 2000 ft, then climbing turn LEFT to join VOR (112.4 PBN) holding at 3200 ft or as instructed by ATC.

THR ELEV 17



OCA(H)	A		B		Distance / Altitude Information						
	Distance(NM)	Altitude (Ft)	Distance(NM)	Altitude (Ft)	6.8D(FAF)	6D	5D	4D	3D	2D	
STRAIGHT-IN	440(423)				2100	1850	1530	1210	900	580	
CIRCLING	1240(1214)										
		Ground speed /Rate of descent information									
		Ground Speed		(Kt.)	80	100	120	140			
		Rate of Descent(5.24%)		(Ft/min)	425	530	635	745			