

AIRCRAFT PARKING/  
DOCKING CHART

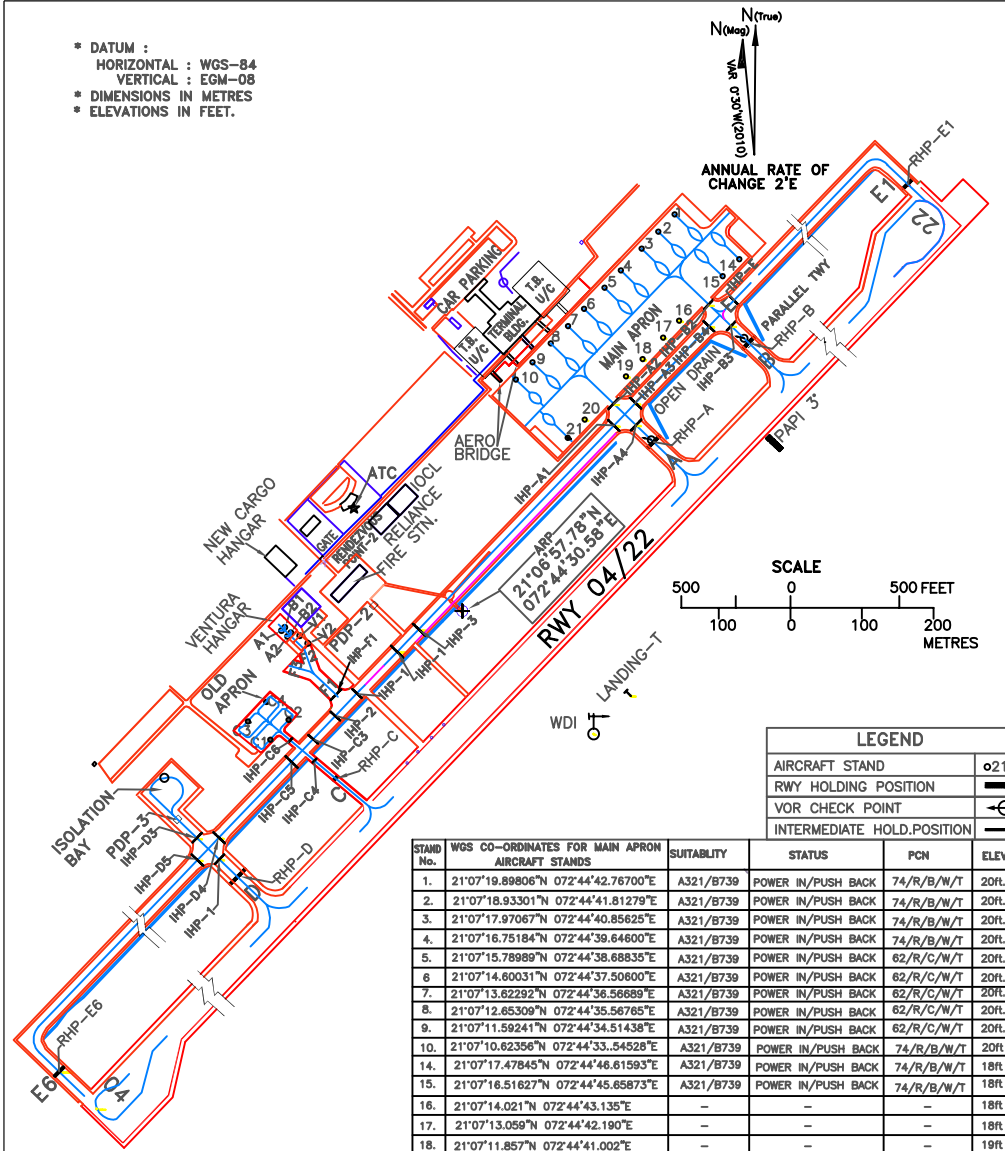
MAIN APRON ELEV 20ft  
OLD APRON ELEV 17ft

TWR 118.550  
STD.BY 118.050

SURAT, INDIA

SURAT AIRPORT

- \* DATUM :
- HORIZONTAL : WGS-84
- VERTICAL : EGM-08
- \* DIMENSIONS IN METRES
- \* ELEVATIONS IN FEET.



LEGEND	
AIRCRAFT STAND	○21
RWY HOLDING POSITION	—
VOR CHECK POINT	⊙
INTERMEDIATE HOLD POSITION	—

STAND No.	WGS CO-ORDINATES FOR MAIN APRON AIRCRAFT STANDS	SUITABILITY	STATUS	PCN	ELEV.
1.	21°07'19.89806"N 072°44'42.76700"E	A321/B739	POWER IN/PUSH BACK	74/R/B/W/T	20ft.
2.	21°07'18.93301"N 072°44'41.81279"E	A321/B739	POWER IN/PUSH BACK	74/R/B/W/T	20ft.
3.	21°07'17.97067"N 072°44'40.85625"E	A321/B739	POWER IN/PUSH BACK	74/R/B/W/T	20ft.
4.	21°07'16.75184"N 072°44'39.64600"E	A321/B739	POWER IN/PUSH BACK	74/R/B/W/T	20ft.
5.	21°07'15.78989"N 072°44'38.68835"E	A321/B739	POWER IN/PUSH BACK	62/R/C/W/T	20ft.
6.	21°07'14.80031"N 072°44'37.50800"E	A321/B739	POWER IN/PUSH BACK	62/R/C/W/T	20ft.
7.	21°07'13.62292"N 072°44'36.56689"E	A321/B739	POWER IN/PUSH BACK	62/R/C/W/T	20ft.
8.	21°07'12.65309"N 072°44'35.56765"E	A321/B739	POWER IN/PUSH BACK	62/R/C/W/T	20ft.
9.	21°07'11.59241"N 072°44'34.51438"E	A321/B739	POWER IN/PUSH BACK	62/R/C/W/T	20ft.
10.	21°07'10.62356"N 072°44'33.54528"E	A321/B739	POWER IN/PUSH BACK	74/R/B/W/T	20ft.
11.	21°07'10.89867"N 072°44'32.54528"E	A321/B739	POWER IN/PUSH BACK	74/R/B/W/T	18ft.
12.	21°07'10.89867"N 072°44'31.54528"E	A321/B739	POWER IN/PUSH BACK	74/R/B/W/T	18ft.
13.	21°07'10.89867"N 072°44'30.54528"E	A321/B739	POWER IN/PUSH BACK	74/R/B/W/T	18ft.
14.	21°07'10.89867"N 072°44'29.54528"E	A321/B739	POWER IN/PUSH BACK	74/R/B/W/T	18ft.
15.	21°07'10.89867"N 072°44'28.54528"E	A321/B739	POWER IN/PUSH BACK	74/R/B/W/T	18ft.
16.	21°07'14.0211"N 072°44'43.135"E	—	—	—	18ft.
17.	21°07'13.0591"N 072°44'42.190"E	—	—	—	18ft.
18.	21°07'11.8571"N 072°44'41.002"E	—	—	—	19ft.
19.	21°07'10.89867"N 072°44'40.049"E	—	—	—	18ft.
20.	21°07'08.4971"N 072°44'37.640"E	—	—	—	18ft.
21.	21°07'07.45851"N 072°44'36.65095"E	A321/B739	POWER IN/PUSH BACK	74/R/B/W/T	19ft.
OLD APRON					
C1.	21°06'50.51765"N 072°44'19.35182"E	BEECH200T	POWER IN/POWER OUT	33/R/B/W/T	17ft.
C2.	21°06'51.62786"N 072°44'20.42726"E	BEECH200T	POWER IN/POWER OUT	33/R/B/W/T	17ft.
C3.	21°06'51.50791"N 072°44'18.01885"E	BEECH200T	POWER IN/POWER OUT	33/R/B/W/T	17ft.
C4.	21°06'52.62018"N 072°44'19.09674"E	BEECH200T	POWER IN/POWER OUT	33/R/B/W/T	17ft.
VENTURA HANGAR					
A1.	21°06'56.556"N 072°44'19.934"E	C208B	POWER IN/PUSH BACK		21ft.
A2.	21°06'56.250"N 072°44'20.290"E	C208B	POWER IN/PUSH BACK		20ft.
B1.	21°06'56.738"N 072°44'20.117"E	C208B	POWER IN/PUSH BACK		20ft.
B2.	21°06'56.434"N 072°44'20.467"E	C208B	POWER IN/PUSH BACK		20ft.
V1.	21°06'56.286"N 072°44'21.010"E	C208B	POWER IN/PUSH BACK	18/R/B/W/T	20ft.
V2.	21°06'55.863"N 072°44'21.493"E	C208B	POWER IN/PUSH BACK	18/R/B/W/T	20ft.

TAXIWAY	PCN	WIDTH
A	62/R/C/W/T	23M
B	62/R/C/W/T	23M
C	26.2/F/C/W/T	10.5M
D	66/R/A/W/T	23M
E	74/R/B/W/T	23M
E1	74/R/B/W/T	23M
F1	18/R/B/W/T	23M
F2	18/R/B/W/T	23M
F3	18/R/B/W/T	23M
E6	74/R/B/W/T	23M

DATE OF AERONAUTICAL INFORMATION  
MARCH 2025

DRG. NO. -AAI/12-PDC/2022  
AMENDED ON 29-05-2025