

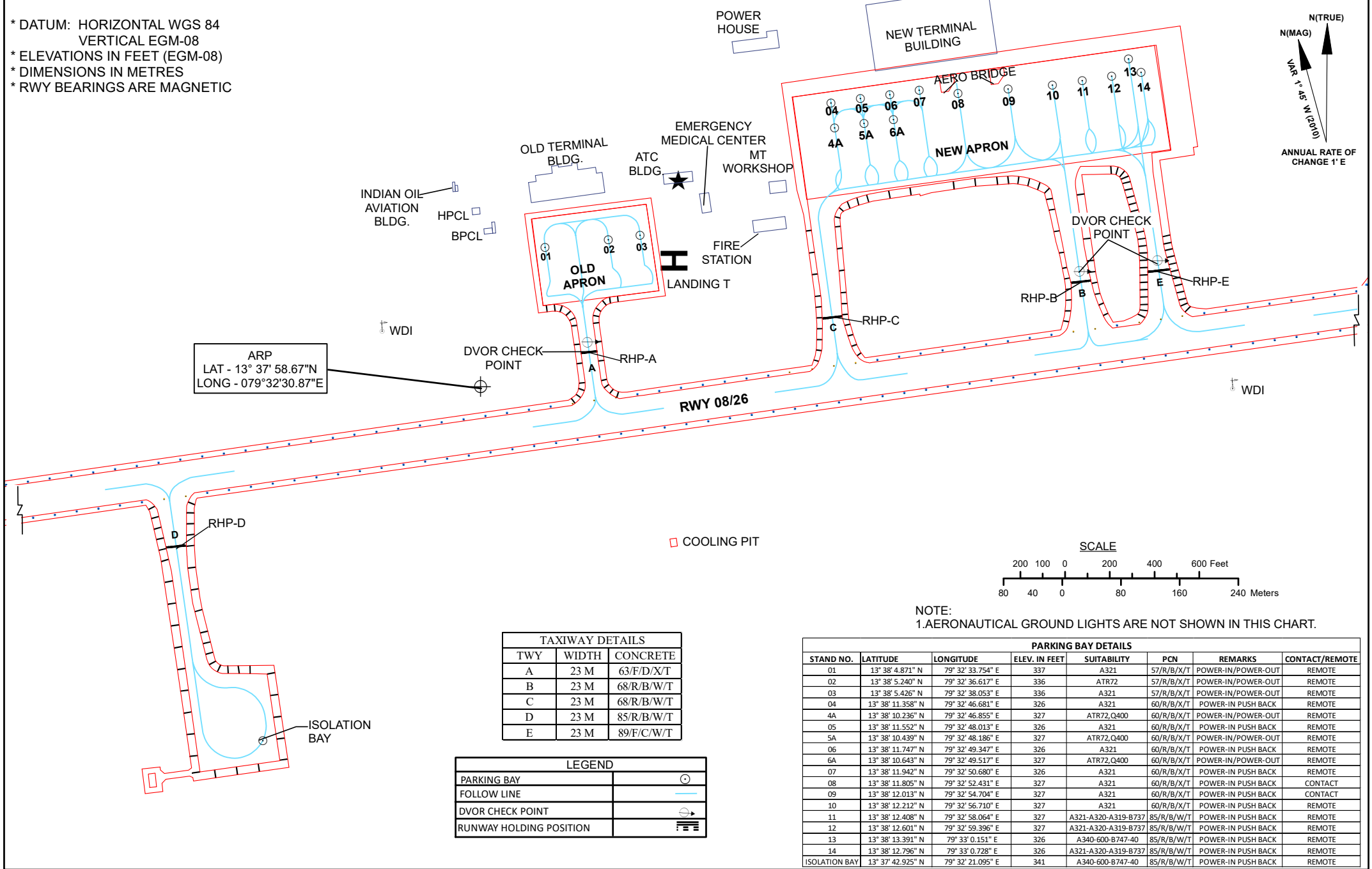
# AIRCRAFT PARKING/ DOCKING CHART

NEW APRON ELEV. : 327 ft.  
OLD APRON ELEV. : 337 ft.

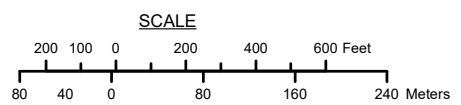
TWR 119.000  
BACKUP 124.300

# TIRUPATI, INDIA TIRUPATI AIRPORT

- \* DATUM: HORIZONTAL WGS 84  
VERTICAL EGM-08
- \* ELEVATIONS IN FEET (EGM-08)
- \* DIMENSIONS IN METRES
- \* RWY BEARINGS ARE MAGNETIC



ARP  
LAT - 13° 37' 58.67"N  
LONG - 079°32'30.87"E



NOTE:  
1. AERONAUTICAL GROUND LIGHTS ARE NOT SHOWN IN THIS CHART.

TAXIWAY DETAILS		
TWY	WIDTH	CONCRETE
A	23 M	63/F/D/X/T
B	23 M	68/R/B/W/T
C	23 M	68/R/B/W/T
D	23 M	85/R/B/W/T
E	23 M	89/F/C/W/T

LEGEND	
PARKING BAY	
FOLLOW LINE	
DVOR CHECK POINT	
RUNWAY HOLDING POSITION	

PARKING BAY DETAILS							
STAND NO.	LATITUDE	LONGITUDE	ELEV. IN FEET	SUITABILITY	PCN	REMARKS	CONTACT/REMOTE
01	13° 38' 4.871" N	79° 32' 33.754" E	337	A321	57/R/B/X/T	POWER-IN/POWER-OUT	REMOTE
02	13° 38' 5.240" N	79° 32' 36.617" E	336	ATR72	57/R/B/X/T	POWER-IN/POWER-OUT	REMOTE
03	13° 38' 5.426" N	79° 32' 38.053" E	336	A321	57/R/B/X/T	POWER-IN/POWER-OUT	REMOTE
04	13° 38' 11.358" N	79° 32' 46.681" E	326	A321	60/R/B/X/T	POWER-IN PUSH BACK	REMOTE
4A	13° 38' 10.236" N	79° 32' 46.855" E	327	ATR72, Q400	60/R/B/X/T	POWER-IN/POWER-OUT	REMOTE
05	13° 38' 11.552" N	79° 32' 48.013" E	326	A321	60/R/B/X/T	POWER-IN PUSH BACK	REMOTE
5A	13° 38' 10.439" N	79° 32' 48.186" E	327	ATR72, Q400	60/R/B/X/T	POWER-IN/POWER-OUT	REMOTE
06	13° 38' 11.747" N	79° 32' 49.347" E	326	A321	60/R/B/X/T	POWER-IN PUSH BACK	REMOTE
6A	13° 38' 10.643" N	79° 32' 49.517" E	327	ATR72, Q400	60/R/B/X/T	POWER-IN/POWER-OUT	REMOTE
07	13° 38' 11.942" N	79° 32' 50.680" E	326	A321	60/R/B/X/T	POWER-IN PUSH BACK	REMOTE
08	13° 38' 11.805" N	79° 32' 52.431" E	327	A321	60/R/B/X/T	POWER-IN PUSH BACK	CONTACT
09	13° 38' 12.013" N	79° 32' 54.704" E	327	A321	60/R/B/X/T	POWER-IN PUSH BACK	CONTACT
10	13° 38' 12.212" N	79° 32' 56.710" E	327	A321	60/R/B/X/T	POWER-IN PUSH BACK	REMOTE
11	13° 38' 12.408" N	79° 32' 58.064" E	327	A321-A320-A319-B737	85/R/B/W/T	POWER-IN PUSH BACK	REMOTE
12	13° 38' 12.601" N	79° 32' 59.396" E	327	A321-A320-A319-B737	85/R/B/W/T	POWER-IN PUSH BACK	REMOTE
13	13° 38' 13.391" N	79° 33' 0.151" E	326	A340-600-B747-40	85/R/B/W/T	POWER-IN PUSH BACK	REMOTE
14	13° 38' 12.796" N	79° 33' 0.728" E	326	A321-A320-A319-B737	85/R/B/W/T	POWER-IN PUSH BACK	REMOTE
ISOLATION BAY	13° 37' 42.925" N	79° 32' 21.095" E	341	A340-600-B747-40	85/R/B/W/T	POWER-IN PUSH BACK	REMOTE