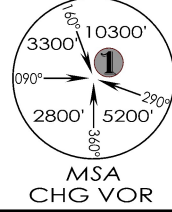


1-4

VICG CHANDIGARH IAF CHANDIGARH, INDIA  
28 FEB 23 Eff 08 AUG 23 CAT I ILS RWY 11

CHANDIGARH Approach 122.65, 120.7		CHANDIGARH Tower 118.3, 118.925		ATIS 116.5
VOR CHG <b>116.5</b>	LOC ICHD <b>110.3</b>	FINAL Apch Crs <b>112°</b>	GS <b>D 4.0 ICHD 2440'</b>	DA(H)/MDA(H) As per table
MISSED APCH: Climb STRAIGHT AHEAD to 2900', then climbing turn RIGHT to join VOR hold at 5000' or as directed by ATC.				Apt Elev 1032' RWY <b>1028'</b>
Alt Set: hPa	Rwy Elev: 37 hPa	Trans level: By ATC	Trans alt: 12000'	



1 Inch = 3.5 NM

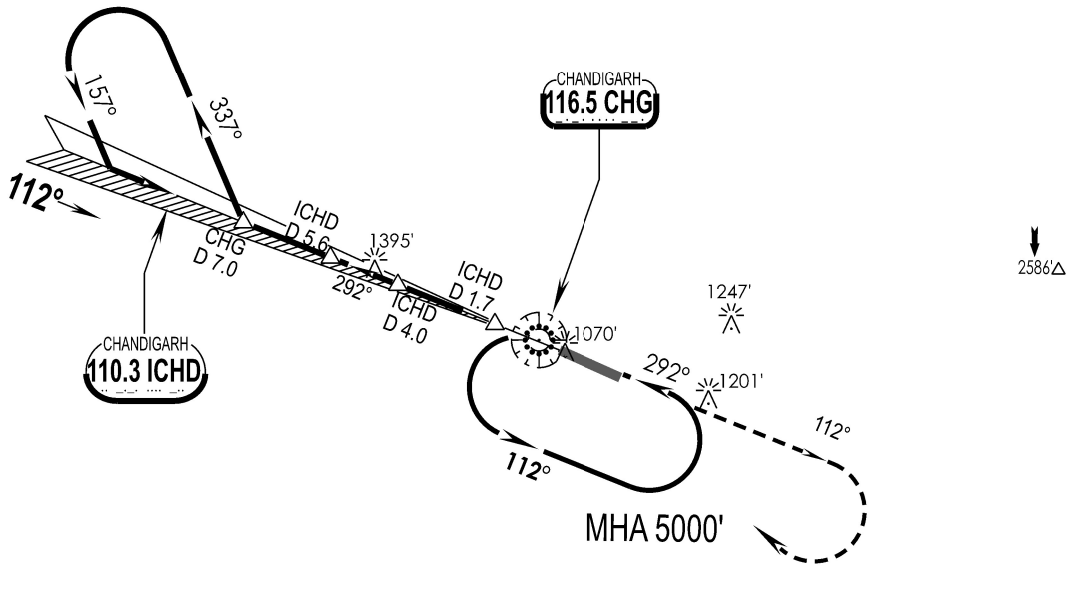
NM 5

0

NM 5

**DME Required**

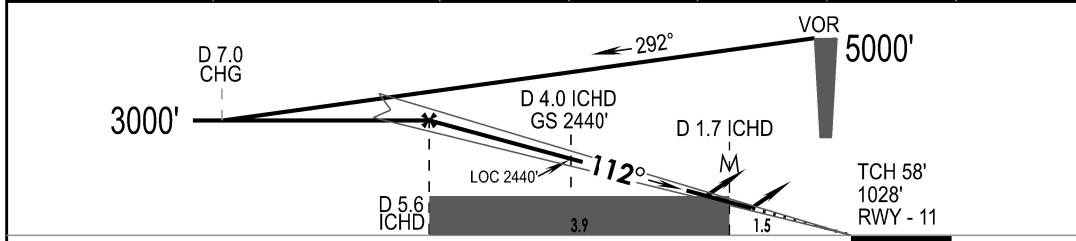
① : MSA within 10Nm from R-340 to R-110 is 8000'.



SURVEY PERIOD : 2022-23

**CAUTION**  
- Do not cross beyond D13.5 CHG during Missed approach to avoid entering VID-122, when active.

LOC(GS OUT)	ICHD DME	5.6	5.0	4.0	3.0	2.0
	ALTITUDE (ft)	3000	2790	2440	2090	1740



GND SPEED KTS	80	100	120	140	160	180	FALS PAPI-L	↑ 2900'	↻ 5000' RT
ILS GS or LOC DESCENT ANGLE 3.3°	466	583	700	816	933	1050			
MAP AT D 1.7 ICHD									

STRAIGHT-IN LANDING RWY 11				CIRCLE - TO - LAND			
ILS		LOC (GS OUT) CDFA		AVOID VISUAL CIRCLING OVER CHANDIGARH CITY			
DA (H) <b>1240'</b> (212')		MDA (H) <b>1650'</b> (622')		Max Kts	MDA (H)	VIS	
FULL	ALS OUT	FULL	ALS OUT				
A	RVR 550m	RVR 1200m	RVR 1500m		100	<b>1690'</b> (658')	3000m
B			RVR 2200m	RVR 2400m	135		
C					RVR 2200m	RVR 2400m	180
D			205	3600m			

CHANGES : NEW PROCEDURE

IPDC, DTE OF OPS (T & H)