

TEL: +91-11-24632950 Extn: 2219/2233 AFS: VIDDYXAX FAX: +91-11-24615508 Email: gmais@aai.aero	INDIA AERONAUTICAL INFORMATION SERVICE AIRPORTS AUTHORITY OF INDIA RAJIV GANDHI BHAVAN SAFDARJUNG AIRPORT NEW DELHI – 110003	35/2021
		19 FEB 2021

File No. AAI/ATM/AIS/09-09/2021

Following supplement is issued for information, guidance and necessary action.

sd/-**अनुज अग्रवाल**
ANUJ AGGARWAL
अध्यक्ष/CHAIRMAN**भारतीय विमानपत्तन प्राधिकरण**
AIRPORTS AUTHORITY OF INDIA

[EFFECTIVE DATE: 22 APR 2021]**INSTRUMENT APPROACH CHART – RNP RWY 10 (CAT A/B/C)**
DARBHANGA AIRPORT, DARBHANGA (VEDH)

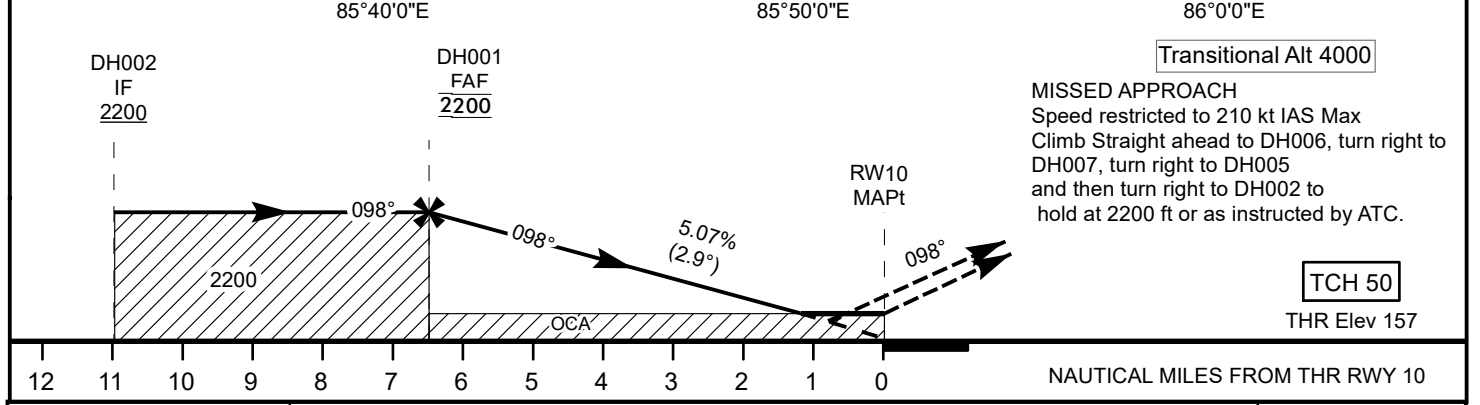
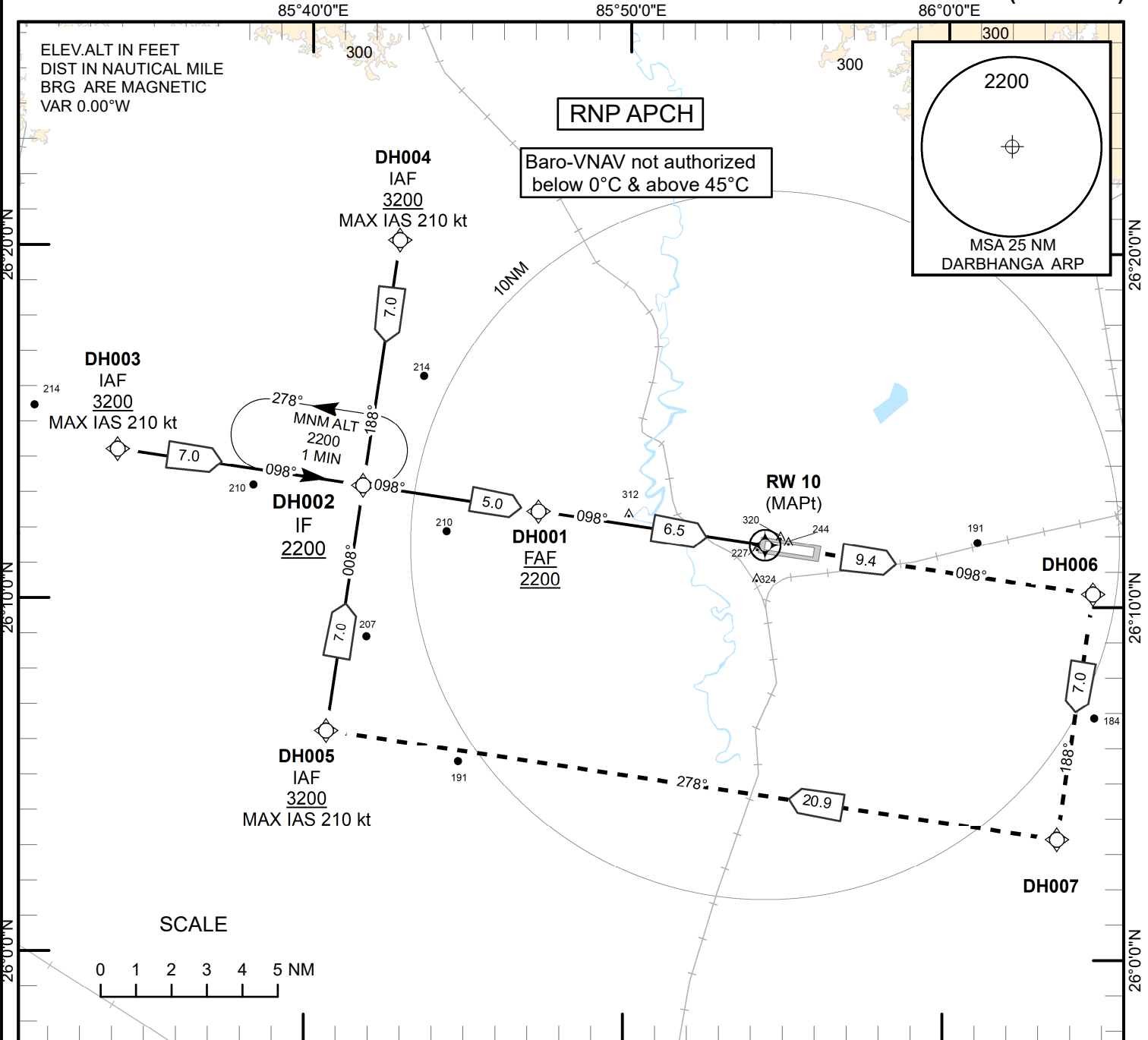
1. Following Instrument Approach Chart is issued for Darbhanga Airport, Darbhanga:
 - i. Instrument Approach Chart – RNP RWY 10 (CAT A/B/C)

**INSTRUMENT
APPROACH
CHART**

**AERODROME ELEV 161ft
HEIGHT RELATED TO
THR RWY 10 - ELEV 157ft**

TWR 123.500

**DARBHANGA(VEDH)
INDIA
RNP RWY 10
(Cat A/B/C)**



OCA (H)		Final Approach - FAF to MAPt Distance - 6.5NM							
Acft Category	A/B/C	Distance to RWY 10	NM	6.5	6	5	4	3	2
LNAV/VNAV	475(318)	Altitude	Ft	2200	2060	1750	1440	1140	830
LNAV	570(409)	Ground Speed	Kt	80	100	120	140	160	
		Rate of Descent (5.07%)	ft/Min	410	515	615	720	820	

DRG.NO. AAI/05-IALC/20/11.02.2021

TABULAR DESCRIPTION

RNP RWY 10 - VEDH											
Serial Number	Path descriptor	Waypoint Identifier	Fly over	Course °M(°T)	Distance (NM)	Turn direction	Altitude (ft)	Speed Limit (Kt)	VPA/TCH °/ft	Role Of The Fix	Navigation Specification
010	IF	DH004	-	-	-	-	+3200.00	210.00	-	IAF	RNP APCH
020	TF	DH002	-	188 (188.00)	7.00	L	+2200.00	-	-	IF	RNP APCH
010	IF	DH005	-	-	-	-	+3200.00	210.00	-	IAF	RNP APCH
020	TF	DH002	-	008 (008.00)	7.00	R	+2200.00	-	-	IF	RNP APCH
010	IF	DH003	-	-	-	-	+3200.00	210.00	-	IAF	RNP APCH
020	TF	DH002	-	097.95 (097.95)	7.00	-	+2200.00	-	-	IF	RNP APCH
010	IF	DH002	-	-	-	-	+2200.00	-	-	IF	RNP APCH
020	TF	DH001	-	097.99 (097.99)	5.00	-	@2200.00	-	-	FAF	RNP APCH
030	TF	RW10	Y	098.04 (098.04)	6.49	-	@207	-	-2.90/50	LTP	RNP APCH
040	CF	DH006	-	098.11 (098.11)	9.33	-	-	210.00	-	MATF	RNP APCH
050	TF	DH007	-	187.99 (187.99)	7.00	R	-	210.00	-	MATF	RNP APCH
060	TF	DH005	-	277.94 (277.94)	20.85	R	-	210.00	-	MATF	RNP APCH
070	TF	DH002	Y	008 (008.00)	7.00	R	+2200	210.00	-	MATF	RNP APCH
080	HM	DH002	Y	098 (098.00)	1.0 min	L	+2200	230.00	-	MAHF	RNP APCH

WAYPOINT LIST

RNP RWY 10	
Waypoint Identifier	Coordinates (WGS84)
DH003	N 26:14:15.01 E 85:34:00.14
DH004	N 26:20:14.09 E 85:42:47.81
DH005	N 26:06:19.80 E 85:40:37.81
DH002	N 26:13:16.95 E 85:41:42.75
DH001	N 26:12:35.26 E 85:47:13.11
RW10	N 26:11:40.78 E 85:54:22.14
DH006	N 26:10:21.90 E 86:04:38.24
DH007	N 26:03:24.74 E 86:03:33.33