

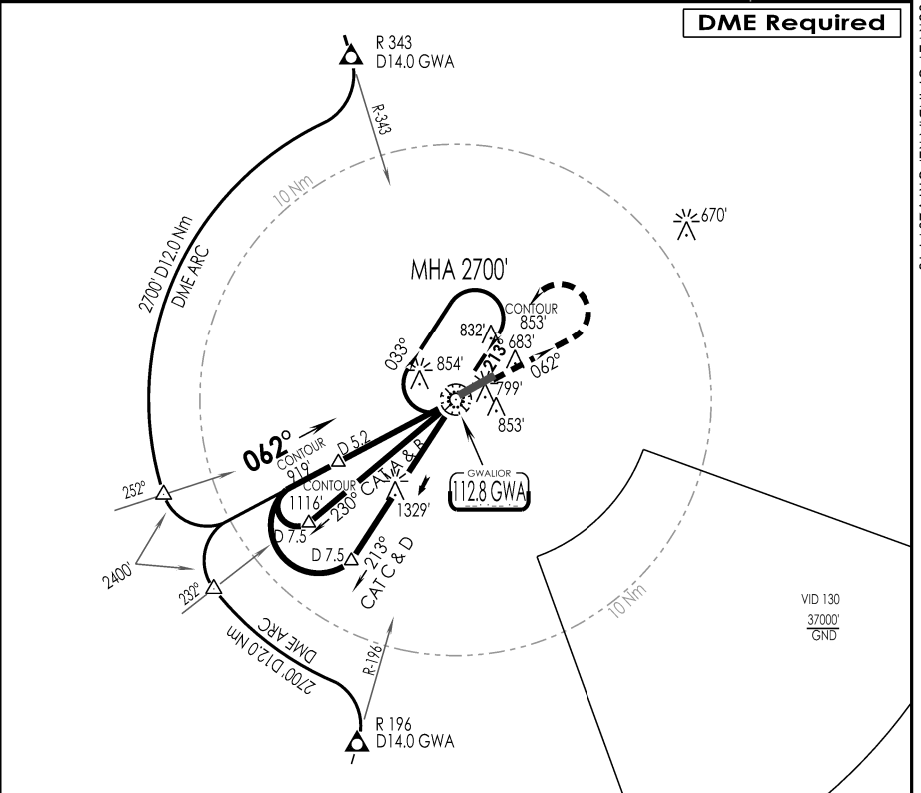
VIGR
GWALIOR

IAF
06 DEC 18

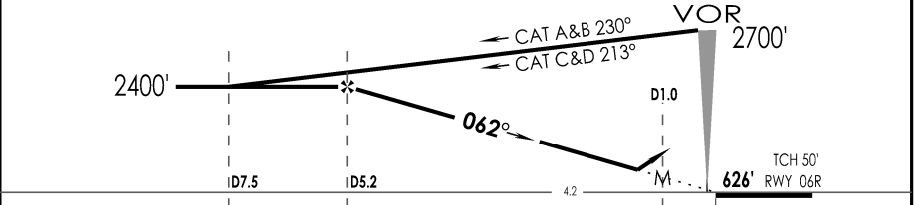
GWALIOR, INDIA
VOR RWY 06R

GWALIOR Approach 122.7 VC ,UC		GWALIOR Tower 122.7 VC		ATIS 112.8	2700'
VOR GWA 112.8	FINAL Apch Crs 062°	FAF D 5.2 GWA 2400'	MDA (H) 1100' (481')	Apt Elev 626' RWY 626'	
MISSED APCH: Climb STRAIGHT AHEAD to 2700', then turn LEFT to join VOR hold or as directed by ATC.					
Alf Set: hPa		Rwy Elev: 21 hPa		Trans level: By ATC	
				Trans alt: 4000'	
					MSA GWA VOR

DME Required



GWA DME	5.2	5.0	4.0	3.0	2.0
ALTITUDE (ft)	2400	2320	2000	1680	1360



GND SPEED KTS	80	100	120	140	160	180
GRADIENT 5.2 %	424	531	637	743	849	955
MAP AT D 1.0 GWA						

STRAIGHT - IN LANDING Rwy 06R				CIRCLE - TO - LAND		
CDFA						
MDA(H) 1100' (481')						
IALS		ALS OUT		Max Kts	MDA (H)	VIS
A			RVR 1500m	100	1150' (531')	2800m
B	RVR 1500m			135		
C			RVR 2300m	180	1250' (631')	3200m
D				205		
					1730' (1111')	5000m

LIGHTING : CAT II(24L),SALS(06R),STD OWL LIGHTING(24R/06L),PAPI(24L/06R)3.0°,PAPI(24R/06L)2.5°
 CHANGES : Apt Elevation IPDC, DTE OF OPS (T & H)
 Airports Authority of India AMDT 03/2025

SURVEY OF INDIA REPORT : 2014-15