

1-1

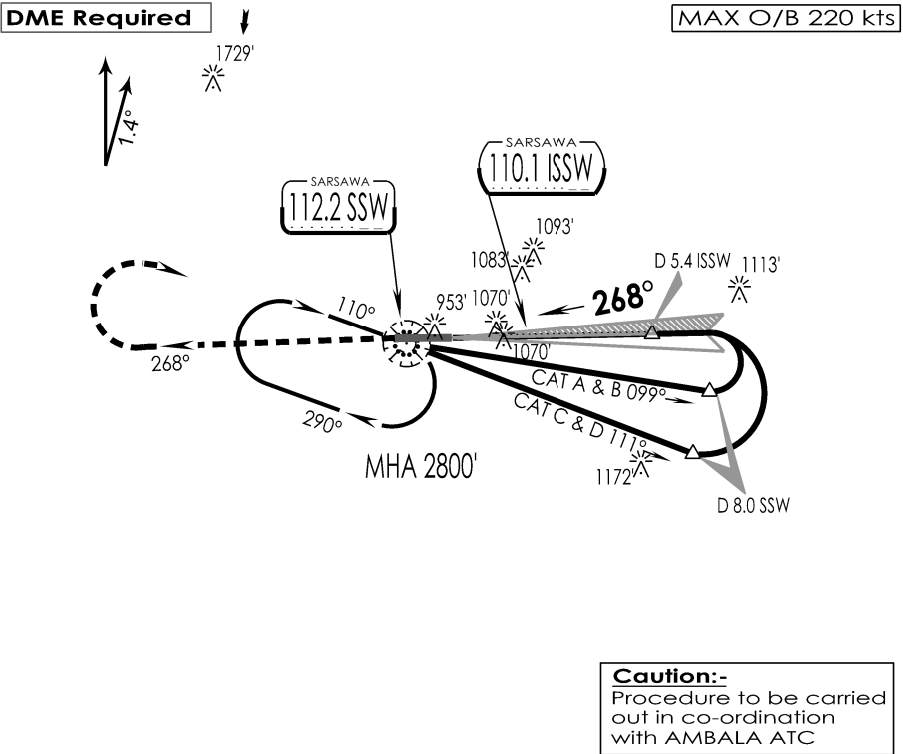
VISP
SARSAWA

IAF
18 NOV 25

SARSAWA, INDIA
CAT I ILS RWY 27

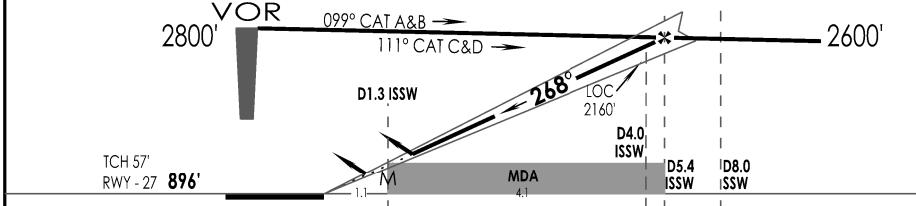
SARSAWA Approach VC,UC			SARSAWA Tower 120.2 VC,UC		ATIS 112.2	
VOR SSW 112.2	LOC ISSW 110.1	FINAL Apch Crs 268°	FAF D 5.4 ISSW 2600'	DA (H) As Per Table	Apt Elev 896' RWY 896'	
MISSED APCH: Climb STRAIGHT AHEAD to 2000', then climbing turn RIGHT to join VOR hold at 2800' or as directed by ATC.						
Alt Set: hPa		Rwy Elev: 32 hPa	Trans level: By ATC		Trans alt: 6000'	

1 Inch = 5.0 NM
5 NM
0
5 NM



Caution:-
Procedure to be carried out in co-ordination with AMBALA ATC

LOC (GS OUT)	ISSW DME	2.0	3.0	4.0	5.0	5.4
	ALTITUDE (ft)	1520	1840	2160	2480	2600



GND SPEED KTS	80	100	120	140	160	180	
DESCENT ANGLE 3°	425	531	637	743	849	955	
MAPT AT D1.3 ISSW							

STRAIGHT-IN LANDING RWY 27				CIRCLE - TO - LAND		
ILS		LOC (GS OUT) CDFA				
DA (H) ABCD: 1114' (218')		MDA (H) 1320' (424')				
	FULL	ALS OUT	FULL	ALS OUT	Max Kts	MDA (H) VIS
A	RVR 550m	RVR 1200m	RVR 1300m	RVR 1500m	A	1440' (552') 2800m
B					B	1490' (594') 3200m
C				RVR 2000m	C	1590' (694') 3600m
D					D	

CHANGES : TWR FREQ

IPDC, DTE OF OPS (T & H)