

1-3

VISP
SARSAWA

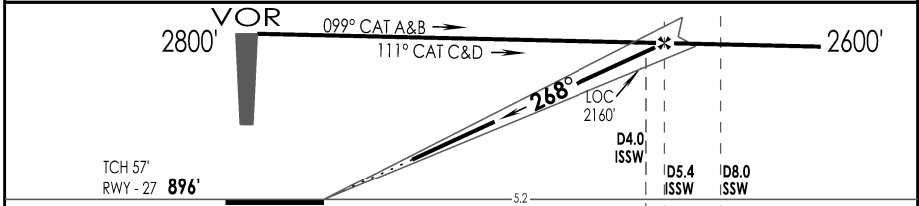
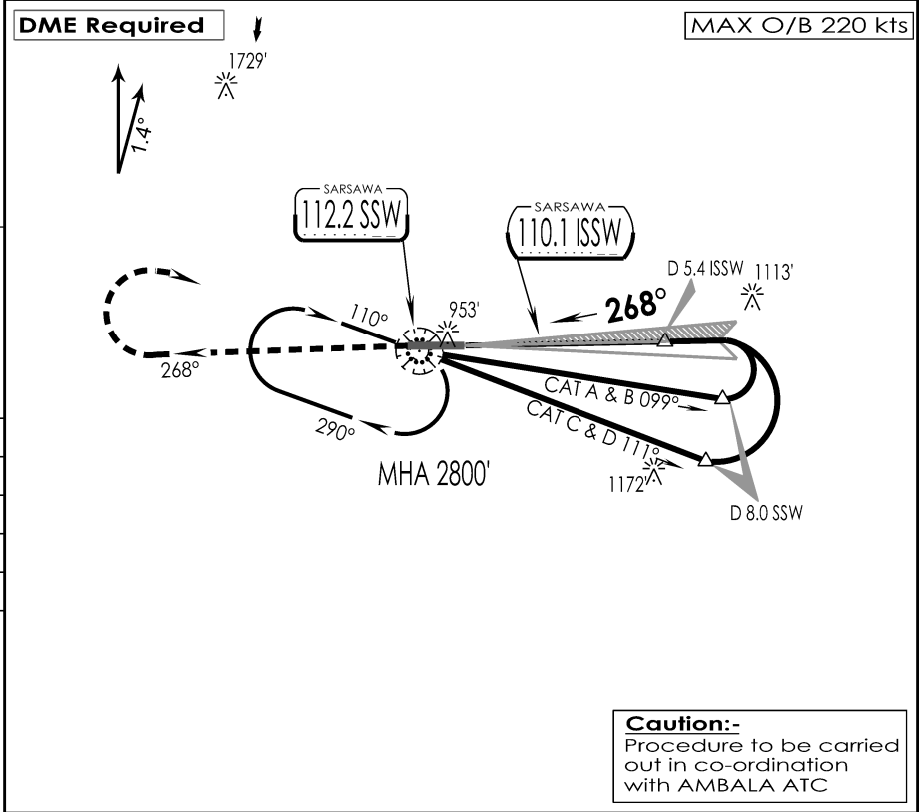
IAF
18 NOV 25

SARSAWA, INDIA
CAT II ILS RWY 27

SARSAWA Approach VC, UC			SARSAWA Tower 120.2 VC, UC		ATIS 112.2
VOR SSW 112.2	LOC ISSW 110.1	FINAL Apch Crs 268°	FAF D 5.4 ISSW 2600'	DA (H) As Per Table	Apt Elev 896' RWY 896'
MISSED APCH: Climb STRAIGHT AHEAD to 2000', then climbing turn RIGHT to join VOR hold at 2800' or as directed by ATC.					
Alt Set: hPa	Rwy Elev: 32 hPa	Trans level: By ATC		Trans alt: 6000'	

SURVEY PERIOD: 2023-24

1 inch = 5.0 NM
5 NM
0
5 NM



GND SPEED KTS	80	100	120	140	160	180	↑ 2000'	↻ 2800' RT
DESCENT ANGLE 3°	425	531	637	743	849	955		

STRAIGHT - IN LANDING Rwy 27				CAT II ILS		RA
A&B: 1012' (116')		C: 1024' (128')		A&B: 116'		C: 128'
D: 1038' (142')			D: 142'			

A	FULL	
B		RVR 300m
C		RVR 400m
D		RVR 450m

CHANGES : TWR FREQ IPDC, DTE OF OPS (T & H)