

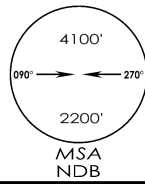
4-2

VISP  
SARSAWA

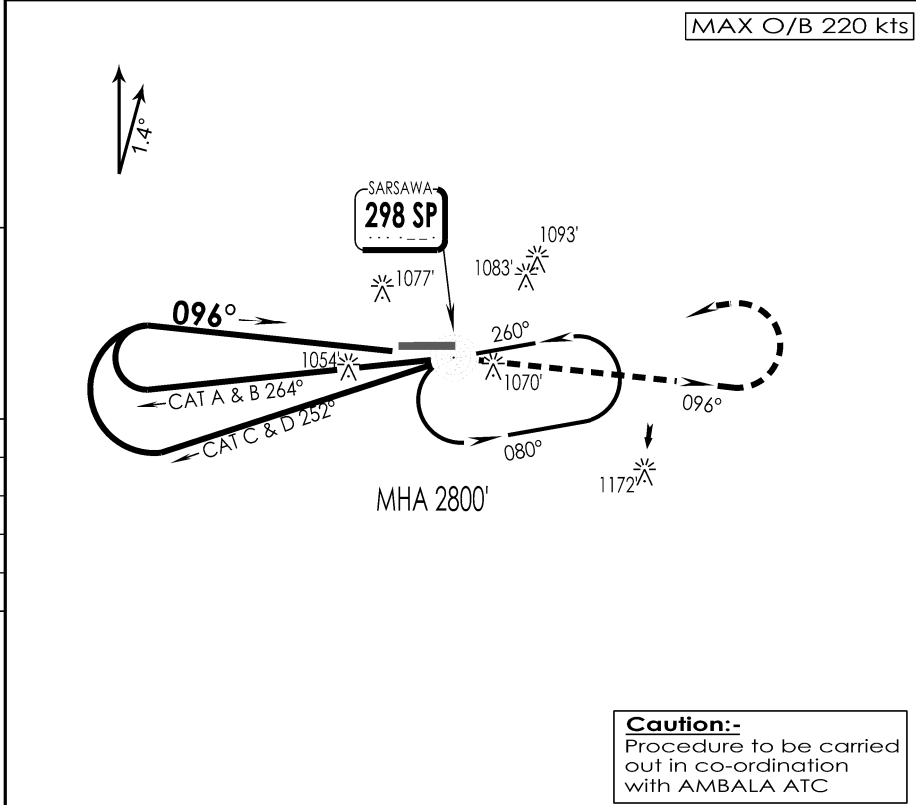
IAF  
18 NOV 25

SARSAWA, INDIA  
NDB RWY 09

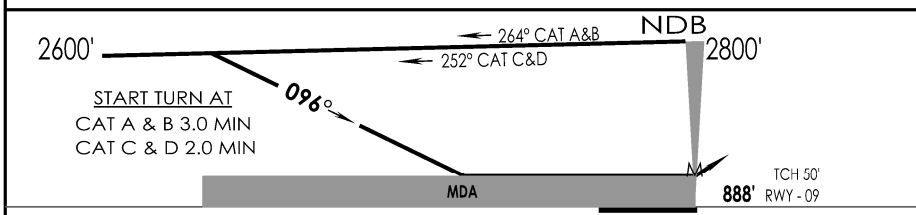
SARSAWA Approach VC,UC		SARSAWA Tower 120.2 VC,UC		ATIS 112.2
NDB SP <b>298</b>	FINAL Apch Crs <b>096°</b>	MDA (H) <b>1440' (552')</b>		Apt Elev 896' RWY 888'
<b>MISSED APCH:</b> Climb STRAIGHT AHEAD to 2000', then climbing turn LEFT to join VOR hold at 2800' or as directed by ATC.		Alt Set: hPa   Rwy Elev: 32 hPa   Trans level: By ATC   Trans alt: 6000'		



1 Inch = 5.0 NM  
5 NM  
0  
5 NM



SURVEY PERIOD: 2023-24



GND SPEED KTS	80	100	120	140	160	180	↑ 2000' ↓ 2800' LT	
DESCENT ANGLE 3°	425	531	637	743	849	955		
MAP AT NDB							STRAIGHT-IN LANDING RWY 09	CIRCLE - TO - LAND
non - CDFA MDA(H) <b>1440' (552')</b>								
	IALS		ALS OUT		Max Kts	MDA (H)	VIS	
A	RVR 2300m		RVR 2700m		A	<b>1440' (552')</b>	2800m	
B					B			
C	RVR 2500m		RVR 2900m		C	<b>1490' (594')</b>	3200m	
D					D	<b>1590' (694')</b>	3600m	

CHANGES : TWR FREQ

IPDC, DTE OF OPS (T & H)