

4-1

VIS P
SARSAWA

IAF
18 NOV 25

SARSAWA, INDIA
NDB RWY 27

SARSAWA Approach VC,UC		SARSAWA Tower 120.2 VC,UC		ATIS 112.2	
NDB SP 298	FINAL Apch Crs 253°	MDA (H) 1410' (514')		Apt Elev 896' RWY 896'	
MISSED APCH: Climb STRAIGHT AHEAD to 2000', then climbing turn RIGHT to join NDB hold at 2800' or as directed by ATC.					
Alt Set: hPa	Rwy Elev: 32 hPa	Trans level: By ATC	Trans alt: 6000'		MSA NDB

1 Inch = 5.0 NM

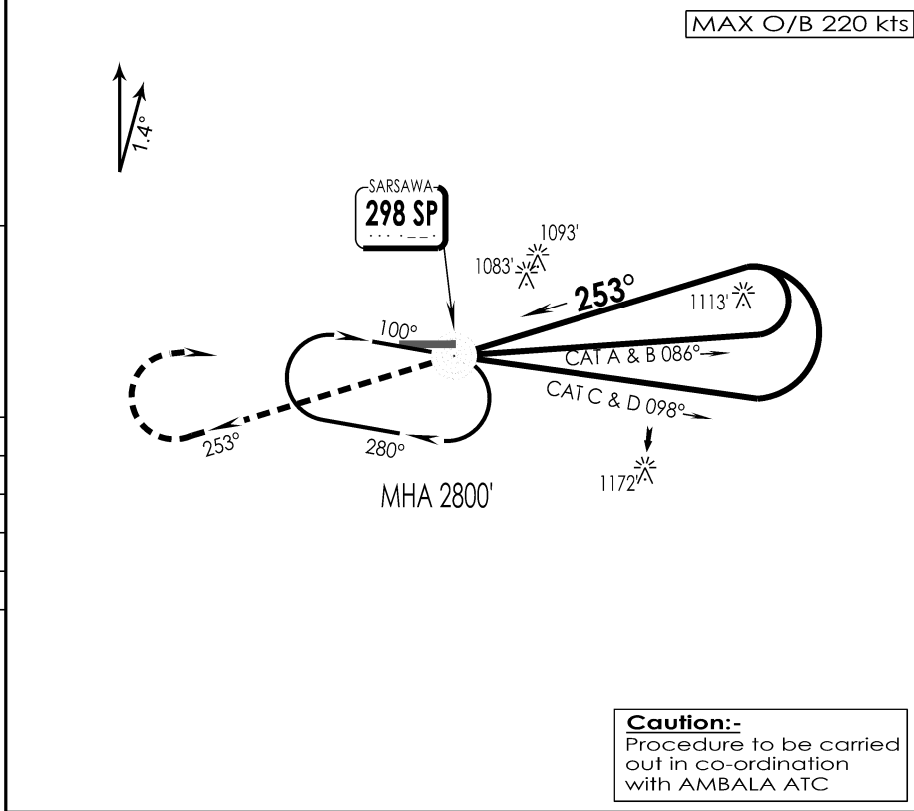
5 NM

0

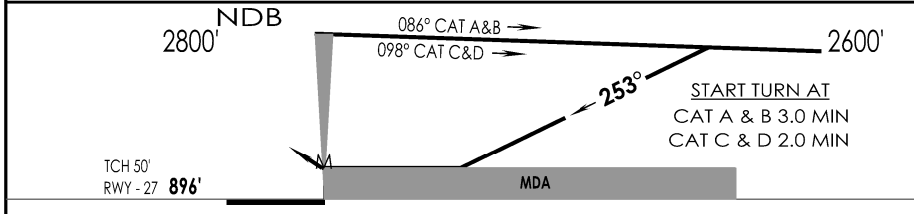
5 NM

MAX O/B 220 kts

SURVEY PERIOD: 2023-24



Caution:-
Procedure to be carried out in co-ordination with AMBALA ATC



GND SPEED KTS	80	100	120	140	160	180			
DESCENT ANGLE 3°	425	531	637	743	849	955			
MAP AT NDB									
STRAIGHT-IN LANDING RWY 27						CIRCLE - TO - LAND			
non - CDFA									
MDA(H)									
FULL			ALS OUT			Max Kts	MDA (H)	VIS	
A	RVR 1800m			RVR 2600m			A	1440'(552')	2800m
B							B		
C	RVR 2000m			RVR 2800m			C	1490'(594')	3200m
D							D	1590'(694')	3600m

CHANGES : TWR FREQ

IPDC, DTE OF OPS (T & H)